

Oklahoma   
PANHELLENIC  
RECRUITMENT GUIDEBOOK

pan.ou.edu  
@oupanhellenic

Formal Recruitment 2023

# Cayman's

LIVE WELL . DRESS WELL . SHOP WELL | EST. 1980



## Brands We Carry

AJE . AGOLDE . ASSOULINE . AVIATOR NATION . BAREFOOT DREAMS . FARM RIO  
FREE CITY . JOHN HARDY . JOHNNIE-O . JUDE FRANCES . KELLY WEARSTLER  
LAURA MERCIER . MAISON FRANCIS KURKDJIAN . MARC JACOBS . MISSONI HOME  
MOTHER . MOUSSY . NATURA BISSE . RAG & BONE . RAILS . NEST . PETER MILLAR  
SEA NY . STAUD . SUPERGOOPI . THREE STORIES . TORY BURCH . ULLA JOHNSON . VINCE

Cayman's | M - F 10 am - 5:30 pm, Saturday 10 am - 5 pm | 405.360.3969  
2001 W. Main Norman, OK | [shop-caymans.com](http://shop-caymans.com) | [@shopcaymans](https://www.instagram.com/shopcaymans)

# table of contents

---

PAGE 3 WELCOME

PAGE 4 GREEK COUNCILS

PAGE 5 GOING GREEK

PAGE 6-7 WHO WE ARE

PAGE 8 PANHELLENIC EXEC BOARD

PAGE 9 HOW TO JOIN

PAGE 10-12 FINANCES

PAGE 14 RECRUITMENT TEAM

PAGE 15 REGISTRATION

PAGE 17-18 ATTIRE SUGGESTIONS

PAGE 19-22 ROUND I-IV

PAGE 23 SCHEDULE

PAGE 24 RECRUITMENT POLICIES

PAGE 25 RECOMMENDATION LETTERS

PAGE 26 TERMS TO KNOW

PAGE 27 PANHELLENIC FACILITIES MAP

PAGE 28 CONTINUOUS OPEN BIDDING

PAGE 29-31 COMMON QUESTIONS & FAQs

PAGE 32 PANHELLENIC CONTACT

PAGE 33 RHO GAMMA ADVICE

# Welcome



Welcome!

I am beyond thrilled that you have taken an interest in the Panhellenic Association. Here at OU, we have 11 amazing chapters who all bring something so unique and special to this campus. Our chapters are filled with exceptional, driven, and brilliant members. They are all a part of the larger Panhellenic community where bonds like no other are formed; this is something that is so special and unique to Panhellenic. No matter where you find your community, I am so glad that you have chosen to call OU your home and I am so excited for you to embark on this journey.

Emma Grace Lary  
Panhellenic President

E  
M  
M  
A  
  
G  
R  
A  
C  
E

Hi friends!

I am so excited for you to start your Panhellenic journey here at the University of Oklahoma. There are 11 amazing chapters here, and one of them will be your home away from home. The Panhellenic community is home to empowering, influential, intelligent, and loving women just like you!

The relationships built in the Panhellenic community with your sisters are long lasting and full of memories. Whatever life throws at you there are always people in your corner to celebrate and uplift you.

Macy Porter  
VP of Recruitment Operations



Hello!

I am so excited that you are interested in the Panhellenic Association. It has brought me so much joy and I hope it does for you, too. At OU, we have 11 amazing chapters who each bring something new and creative to the Panhellenic community, and also exemplify the our ideals of scholarship, service, and career development.

The women of Panhellenic make a big difference on OU's campus, and that is seen around campus in every class and organization that you will encounter. Again, we are so excited to welcome you into the OU family and are appreciative that you are considering joining our team.

Abbey Boetticher  
VP of Recruitment Programming

A  
B  
B  
E  
Y

# FRATERNITY & SORORITY COUNCILS

The University of Oklahoma is home to four Greek councils, each offering a unique experience in fraternity and sorority life. From social-interest organizations, to organizations centered around religion, culture, and even academic programs, there is a Greek experience for all students at OU. Learn more on these pages about all the options for joining the fraternity and sorority community. Visit us online at [greek.ou.edu](http://greek.ou.edu) to learn more about the Greek councils.

## INTERFRATERNITY COUNCIL

The Interfraternity Council is home to 17 fraternities. It is the second-largest council on campus with over 2,400 members and is comprised of social-interest organizations. To learn more about IFC, visit [ifc.ou.edu](http://ifc.ou.edu)

IFC

## MULTICULTURAL GREEK COUNCIL

The Multicultural Greek Council is comprised of 13 culturally-based organizations - seven sororities and six fraternities. MGC is home to over 400 members and is one of the largest and healthiest multicultural councils in the nation. To learn more, visit [mgc.ou.edu](http://mgc.ou.edu)

MGC

## NATIONAL PAN-HELLENIC COUNCIL

The National Pan-Hellenic Council is home of the "Divine Nine" historically Black fraternities and sororities. With nearly 100 members, NPHC is quickly growing. OU is proud to be the only institution in the Big XII to host all 9 NPHC charters. To learn more, visit [link.ou.edu/nphc](http://link.ou.edu/nphc).

NPHC

## PANHELLENIC ASSOCIATION

The Panhellenic Association is the largest Greek council on campus with over 3,100 members in 11 chapters. Comprised of social-interest organizations, PAN is also the largest women's organization on campus. To learn more, visit [pan.ou.edu](http://pan.ou.edu).

PAN

## AFFILIATE CIRCLE

The Affiliate Circle, what used to be known as the Independent Greek Council, is home to 9 special-interest organizations, comprised of four fraternities and five sororities. With over 300 members, Affiliate Circle is our newest council at OU, founded in 2015. To learn more, visit [link.ou.edu/igc](http://link.ou.edu/igc).

# GOING GREEK

## MULTICULTURAL GREEK COUNCIL

MGC is home to seven sororities that serve various interest groups including Asian, Latina, Native American and Multicultural interest.

MGC sororities will host two days of informationals, during the first two weeks of each semester - prospective members are required to attend at least one. MGC will host a showcase which highlights all of our organizations at the beginning of each fall semester; however, prospective students are allowed to rush multiple semesters if needed. Each chapter also hosts individual rush events that all prospective members are welcomed to attend. We welcome everyone to explore their options as our goal is for students to find a home away from home through MGC.



GALILEA PEREZ - MGC PRESIDENT  
galilea.perez-1@ou.edu

### MGC SORORITIES

Alpha Kappa Delta Phi International Sorority, Inc.  
Gamma Delta Pi Sorority, Inc.  
Kappa Delta Chi Sorority, Inc.  
Lambda Delta Psi Sorority, Inc.  
Phi Delta Alpha Sorority, Inc.  
Sigma Lambda Gamma National Sorority, Inc.  
Theta Nu Xi Multicultural Sorority, Inc.

[LEARN MORE AT MGC.OU.EDU](https://link.ou.edu/mgc)

## NATIONAL PAN-HELLENIC COUNCIL

NPHC is home to four sororities, each part of the "Divine Nine." NPHC organizations are historically Black Greek-lettered organizations.

NPHC does not have a formal recruitment process, however, each chapter does hold individual rush and intake meetings or informationals at their own discretion. Typically, flyers or social media announcements will be posted in advance. Each organization has different, specific requirements for their applicants in order to become a candidate for membership. NPHC organizations are typically looking for students with an established collegiate GPA - meaning, first semester freshmen are not often eligible to join.



MARIAH BROWN - NPHC PRESIDENT  
mariah.a.brown-1@ou.edu

### NPHC SORORITIES

Alpha Kappa Alpha Sorority, Inc.  
Delta Sigma Theta Sorority, Inc.  
Sigma Gamma Rho Sorority, Inc.  
Zeta Phi Beta Sorority, Inc.

[LEARN MORE AT LINK.OU.EDU/NPHC](https://link.ou.edu/nphc)

## AFFILIATE CIRCLE

Affiliate Circle is home to four sororities that serve various interest groups including STEM, Christian and music interest.

The recruitment process for the Affiliate Circle varies by chapter. Some chapters recruit semesterly, while others recruit annually. Many Affiliate Circle chapters recruit the first few weeks of each semester and hold a variety of events for those interested in joining their chapter to attend. Consider following individual chapters you might be interested in to stay up to date with all current and upcoming recruitment events. Visit [link.ou.edu/igc](https://link.ou.edu/igc) to see a full list of Affiliate Circle organizations and learn more about the council.

### AFFILIATE CIRCLE SORORITIES

Alpha Sigma Kappa  
Sigma Alpha Iota  
Sigma Lambda Alpha Sorority, Inc.  
Sigma Phi Lambda

[LEARN MORE AT LINK.OU.EDU/IGC](https://link.ou.edu/igc)

# WHO WE ARE

## *our Values*

The Panhellenic Association has been the center for women's leadership and service on campus since 1909. The council serves as the coordinating body of 11 National Panhellenic Conference affiliated sororities on campus. The council promotes four core values in all we do - scholarship, service, leadership and sisterhood.

## SCHOLARSHIP



Our council provides academic mentoring, tutoring, time management seminars, student halls, and information on free campus resources.

## SERVICE



All of our organizations provide assistance to their individual philanthropies, as well as Panhellenic's philanthropy, the United Way of Norman.

## LEADERSHIP



The fraternity and sorority experience is a direct springboard into campus engagement. Panhellenic membership provides multiple opportunities to help members grow as leaders.

## SISTERHOOD



Joining a Panhellenic organization means having over 3,100 women on your team. Sororities offer opportunities to create lifelong bonds while encourages individual growth.

# WHO WE ARE *by the numbers*

The University of Oklahoma Panhellenic Association is a vibrant community filled with scholars, leaders, and engaged citizens. We pride ourselves on bringing excellence to our community each day. Take some time to learn more about our community of sorority members.

## *people*



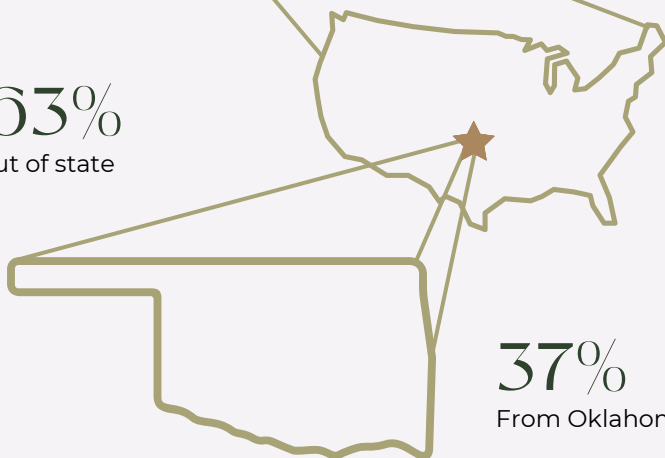
**3,100** total members

**11** Panhellenic chapters at OU



**< 1%**  
International students

**63%**  
Out of state



## PANHELLENIC CREED

We, as Undergraduate members of women's fraternities, stand for good scholarship, for guarding of good health, for maintenance of fine standards, and for serving to the best of our ability, our college community. Cooperation for furthering fraternity life, in harmony with its best possibilities, is the ideal that shall guide our fraternity activities.

We, as Fraternity Women, stand for service through the development of character inspired by the close contact and deep friendship of individual fraternity and Panhellenic life. The opportunity for wide and wise human service, through mutual respect and helpfulness, is the tenet by which we strive to live.

## *academics*



**3.43 GPA**

All-Panhellenic GPA compared to the all-women's GPA at OU of a 3.41



**436**

Panhellenic members pursuing more than one degree

## *service*



**80,000 +**  
Community service hours completed in 2022



**\$500,000+**  
Philanthropic funds raised in 2022



**1,100+**  
Leadership positions held on campus in 2022



# PANHELLENIC

## *Executive Board*

The Panhellenic Association at the University of Oklahoma is a student-led organization, with current students comprising our executive council team. These students are elected in November and serve a full calendar term from January - December. Each Panhellenic Executive Board member is a sorority member at the University of Oklahoma in good standing with their chapter.

During Formal Recruitment, these student leaders will be in the Panhellenic Headquarters Office located in the Jim Thorpe Multicultural Center. The Panhellenic Executive Board will serve as Panhellenic staff in the summer and are happy to provide assistance or answer questions you may have about Formal Recruitment, Continuous Open Bidding or general Panhellenic information.



Top row, left to right: Savannah Simpson (VP of Administrative Affairs), Abigail Boetticher (VP of Recruitment Programming), Presley Eaton (VP of Judicial Affairs), Parker Shed (Dir. of Recruitment Operations), Macy Porter (VP of Recruitment Operations), and Emilie Eix (VP of Inclusivity).

Bottom row, left to right: Emily Barton (VP of Programming), Mary Grace McConn (VP of Public Affairs), Emma Grace Lary (Council President), Mary Kate McDaniel (VP of Philanthropy), and Lily Fields (VP of Finance).

# HOW TO JOIN

## *our community*

The Panhellenic Association at the University of Oklahoma is proud to offer multiple ways for students to become members of the Panhellenic organizations. While this booklet does focus on Formal Recruitment, many students in our community have joined their organizations through Panhellenic's Informal Recruitment process.

Learn more about how to become a Panhellenic member below:

### FORMAL RECRUITMENT

The process by which most Panhellenic members join their organizations. Formal Recruitment begins several days before classes begin in the fall term.

Potential new members (PNMs) receive individual party schedules from the Panhellenic staff each morning during the process (beyond Round 1).

Formal Recruitment is also referred to as "Fall Formal Recruitment" or "Primary Recruitment." This standardized process of recruitment only occurs before the fall term begins.

During Formal Recruitment, chapters are allowed to recruit up to quota, or the number of PNMs (determined at the end of recruitment) that each chapter is allowed to pledge regardless of a chapter's total membership number.

All 11 Panhellenic organizations participate in Formal Recruitment.

### INFORMAL RECRUITMENT

Fewer students join our community through Informal Recruitment (50-90 each term) than Formal Recruitment (900-1,000 in the fall term).

This process is informal in nature. Chapters drive the process and invite students to recruitment events independent from Panhellenic.

Informal Recruitment is also referred to as "Continuous Open Bidding," or COB, and sometimes referred to "Spring Recruitment." Informal Recruitment occurs in the fall and spring semesters.

During Informal Recruitment, only chapters that have not pledged to campus total are eligible to participate. Total is automatically reset within 72 hours following primary, or Fall Formal Recruitment, and then following the first week of the spring term beginning.

Only chapters that are below campus total can participate in Informal Recruitment.

There is no one correct way to join a Panhellenic organization. Our team encourages you to find the recruitment process that best suits your personality and your circumstance. If you have additional questions or want to talk about your options, please reach out to us at [panhellenic@ou.edu](mailto:panhellenic@ou.edu) or by calling (405) 325-3163

# YOUR FIRST YEAR

## *at a glance*

The University of Oklahoma Panhellenic Association strives to make every year of the sorority experience a great one. However, we recognize the first year can be the most exciting and influential of all.

The new member member experience may vary slightly between organizations, but we wanted to share a few things that you can expect in your first year as a Panhellenic member.

### *Study Hours*

Some chapters require a certain number of study hall hours to be completed during the week. Sororities also implement a number of educational programs to assist new members in the academic transition into college.

### *New Member Experience*

As a new member, you will be required to attend a weekly new member meeting in addition to weekly chapter meetings. The goal of these meetings is to teach new members the values, traditions, and rituals of the organization.

### *Philanthropic Service*

Each Greek chapter enjoys serving its local and national philanthropy and will host events each semester to raise awareness and donations for the cause. New members are invited to attend these events as a way to socialize within the community while supporting a worthy cause.

### *Community Involvement*

As a new member, you will be encouraged to participate in campus and Greek-wide events such as The Big Event, Dance Marathon, and Homecoming. These events are not only fun, but provide an opportunity to meet and work with students from across campus. This is also a great opportunity to get involved in leadership on campus through networking and involvement.

### *Sisterhood Events*

Joining a Panhellenic organization is a great way to meet people and create lifelong friendships. Many organizations hold events to help bond chapter members. Sisterhood events, date parties, member class mixers, etc. create a lasting memories for Panhellenic members.

### *Educational Programming*

Fraternity and Sorority Programs and Services and the Panhellenic Association host various educational programs each year to educate our students on topics such as leadership and risk management. Our programs include the following:

- Hazing and alcohol education
- Sexual assault awareness
- Positive social media strategies

### *Safe Break*

Safe Break is an annual event hosted by the Panhellenic Association each year before Spring Break. The event is focused on safety and smart decision-making during the time off from classes.

Each year, we celebrate the life of Lisa Weider, a beloved member of the Panhellenic community and Alpha Omicron Pi sisterhood at OU who tragically passed away during her Spring Break vacation in 2004.

# FINANCIAL

## Transparency

The information below includes all required costs of Panhellenic membership for the 2023-2024 year as reported in March 2023. Total costs below include member dues, chapter fees, and assessments including inter/national fees, required apparel, housing and/or parlor fees, etc.

In a spirit of transparency and accountability, this information will be provided to potential new members and other Panhellenic constituents before, during, and after the University of Oklahoma Formal Recruitment process.

ORGANIZATION	NEW MEMBER YEAR	MEMBER IN HOUSE	MEMBER OUT OF HOUSE
Alpha Chi Omega	\$4,574.00	\$12,546.00	\$3,940.00
Alpha Gamma Delta*	\$3,606.00	\$10,950.00	\$3,306.00
Alpha Omicron Pi	\$4,347.00	\$11,582.00	\$3,584.00
Alpha Phi	\$4,179.50	\$9,399.50	\$3,227.50
Chi Omega	\$3,995.00	\$11,585.00	\$3,330.00
Delta Delta Delta	\$4,235.00	\$11,900.00	\$3,500.00
Delta Gamma*	\$3,027.00	\$8,327.00	\$2,697.00
Gamma Phi Beta	\$3,197.50	\$10,500.00	\$3,650.00
Kappa Alpha Theta	\$4,801.88	\$10,914.04	\$3,267.88
Kappa Kappa Gamma	\$4,898.00	\$12,271.00	\$3,494.00
Pi Beta Phi	\$2,418.00	\$10,405.00	\$3,530.00
<b>AVERAGE</b>	\$3,934.44	\$10,943.59	\$3,411.49
<b>RANGE</b>	\$2,418.00 - \$4,898.00	\$8,327.00 - \$12,546.00	\$2,697.00 - \$3,940.00

\*subject to change - final budget has not been finalized for 2023 - 2024

# FINANCIAL Information

Financial requirements are an important consideration for students participating in sorority recruitment. It is important to be as informed as possible with the costs associated with the sorority experience. If you accept an invitation to join a chapter, you will enter into a financial agreement and contract for housing that includes membership dues and fees during your collegiate years.

Dues and fees vary from chapter to chapter and from year to year. It is important to note sorority costs may be more expensive during your first year in the organization due to one-time fees and expenses. It is also important to mention that additional costs may arise during the year for items such as pictures, t-shirts, or other miscellaneous items.

At the University of Oklahoma, 59% of Panhellenic members received financial aid in 2022 and over \$12.2 million in scholarships have been awarded to Panhellenic members in the last year

## SORORITY LIVING

Sorority members have the opportunity to live in beautiful, historic homes just off of campus. Chapter houses are privately owned and maintained by local and national sorority alumnae housing corporations.

Once a student has accepted a bid to join a sorority chapter at OU, new members do not usually move immediately into the chapter houses. Typically, sorority members do not move in the chapter facility later in their experience - until their sophomore, junior or senior year. All members have an obligation to live in the chapter facility at some point during their experience. Below we have broken down some of the features of the chapter facilities:

### *Panhellenic Housing*

All 11 of our Panhellenic organizations have chapter facilities. In the 2022-2023 academic year, about 29% of Panhellenic members lived in their sorority's chapter housing. Many of these facilities include full room/board, laundry, parking, and close proximity to campus.

### *Living "In-House"*

Nearly 900 students live in Panhellenic chapter facilities each year. Students that live "in house" get to enjoy living with their sorority siblings. Most Panhellenic members live-in during their sophomore, or second year, and perhaps juniors or senior year if they are involved in chapter leadership.

### *House Directors*

Panhellenic chapter houses employ a full-time, live-in House Directors, sometimes referred to affectionally as, "House Mothers." The House Director oversees the daily operations of the facility and ensures it meets all health and safety standards.

### *Living "Out of House"*

All Panhellenic members are required to live in the chapter facility at some point during their experience, per local chapter policies. Many live in on-campus housing, or privately owned off-campus housing options when not living in the facility. Out of house members are always welcome in the facility and often eat 1-2 meals a week at the house with their friends and siblings.



# RECRUITMENT TEAM

The Panhellenic Association is a student-led organization and Panhellenic members step away from their chapters to join our full-time professional staff to organize and coordinate the Formal Recruitment process.

The University of Oklahoma is dedicated to finding your home away from home and we believe Panhellenic is the place for you. Panhellenic can help you grow into the best version of yourself during your undergraduate years, and beyond. The OU's Greek community is built on fostering high ideals of friendship, scholarship, community service, and leadership.

By choosing to go through recruitment, you will meet many amazing Panhellenic members that want to get to know you, and help you find your home here in OU Panhellenic. Please take the time to read this guide to better help you understand how sorority life can benefit your college career - and decide if the Formal Recruitment process is right for you.

With that, we formally invite YOU to meet our 11 Panhellenic chapters. Each chapter has many opportunities that they provide to their members to enhance their collegiate experience. We are so excited for you to go on this journey with OU Panhellenic and find the place that is best for YOU!

- Recruitment Team 2023

*VP of Recruitment Operations*

*VP of Recruitment Programming*



**MACY PORTER**  
macy.m.porter-1@ou.edu

Macy oversees general recruitment information, registration/reimbursement issues, and accommodations.

*Director of Recruitment Operations*



**PARKER SHED**  
parker.r.shed-1@ou.edu

Parker oversees registration issues, transcript questions and changing information on registration.



**ABBEY BOETTICHER**  
abigail-boetticher@ouhsc.edu

Abbey oversees all Recruitment Guides (Rho Gammas) and questions over recommendation letters.

# REGISTRATION

Registration for the University of Oklahoma's Panhellenic Association Formal Recruitment opens on May 15th. Once registration opens, you can log on to our website, [pan.ou.edu](http://pan.ou.edu), to register. Please check out the information below for additional details:

## Registration Deadlines

MAY 15

Registration opens on [pan.ou.edu](http://pan.ou.edu)

AUGUST 1

Last day for refunds

AUGUST 10

Formal Recruitment registration closes at 5:00 PM

## Housing

University of Oklahoma students with residence hall contracts for 2023-2024 academic year will move in to their residence halls August 8-10. OU Housing and Food Services will send an email with more information about your specific move-in date and time later this summer.

For students living off campus, you will not be required to stay on campus during Formal Recruitment. Some events, such as nightly meetings, will be held on campus and we will notify you of those meeting locations as we get closer to recruitment.

## Meals

As recruitment will be occurring after the campus meal plan has started, we encourage students to use their meal plans during Formal Recruitment. Those students without meal plans will need to find time to grab food at home or on campus during recruitment rounds.

## Tips & Advice

- Be prepared. Have your updated resume, transcripts, and test scores prepared to plug into our online registration. You will be prompted to enter this information and it will be released to the 11 chapters.
- Make sure you know your University of Oklahoma identification number. This is a 9 digit code that will be given to you once your enroll at the university.
- Save a high-quality photo of yourself. Our online system will prompt you to upload an image with the rest of your registration. Make sure it is a true headshot - we will not accept a full-body image. Aim for the photo to be of high-quality so that the chapters will be able to clearly see you!
- Don't be humble. This is a time to brag about yourself and all of the wonderful things you have done prior to going through recruitment!
- Be honest. Our team does cross-check grade data with the OU's records office. The grades you were admitted to the university with will be the grades listed on your profile. For more questions, please email [panhellenic@ou.edu](mailto:panhellenic@ou.edu).
- Make sure to submit your payment. You will not be registered for recruitment until you have submitted your \$100 registration fee.

## MOST IMPORTANTLY...

The chapters are excited to get to know YOU for YOU. Don't be nervous to talk about your values and what makes you passionate. Be **CONFIDENT** and know that there is a place for anyone among our chapters!



# JOIN SOONER PARENTS!

*Become a part of the Sooner Family!  
Visit [parents.ou.edu](http://parents.ou.edu).*



## We are here to serve you.

As part of your student's support system, you play a critical role in helping your student succeed from orientation through graduation. We want to help you in that role. My name is Tracy Carlson and I work with OU's Parent and Family Programs office. The mission of Parent and Family Programs is to partner with families to help their student thrive at OU and beyond.

As the Parent and Family Coordinator, I have the unique privilege of being your connection point to OU. Parent and Family Programs is part of Student Affairs, the division that provides most of the out-of-classroom services your student needs, ranging from living and dining to campus involvement and personal fitness. We are eager to connect your family to the diverse range of opportunities available at our campus.

Visit [parents.ou.edu](http://parents.ou.edu) to join Sooner Parents & find out more about our programs. Please reach out with any questions you may have. I would also like to suggest following Sooner Parents on Facebook & Instagram for more about how you can get involved with OU.



Tracy Carlson  
Coordinator of Parent & Family Programs  
[parents.ou.edu](http://parents.ou.edu)

## Benefits of Membership!

- Monthly Member-Only E-Newsletters
- A One-Time Membership Gift
- Fall and Spring Family Weekend Information
- Access to Purchase Home Football Tickets
- \$20,000 in Scholarships Available to Students of Sooner Parents Members
- Local Discounts
- Opportunities to Volunteer

# ROUND 1 - ROUND 3

## ATTIRE SUGGESTIONS

For Rounds 1 - 3 (Open House - Sisterhood) potential new members will be wearing their "Oklahoma Panhellenic Formal Recruitment" t-shirts. Each student will be given two t-shirts at check-in - a red and white shirt. We will notify the students of which color to wear for each day, but they will be wearing their shirts throughout Rounds 1 - Round 3.



Round 1 of Formal Recruitment will be filled with a lot of walking and can be quite hot. We will be providing a Panhellenic t-shirt for this round. We encourage you to wear something that will make you feel comfortable and confident while you converse with chapters.

Perhaps consider sporting your favorite skirt or shorts and wearing colors that make you feel your best! We suggest wearing shoes comfortable for walking in the heat.

# ROUND IV

## ATTIRE SUGGESTIONS

Preference round is the last round of Formal Recruitment before Bid Day! An invitation to preference round means the particular sorority is very interested in extending membership to you. The parties will focus on the core aspects of sorority life, including friendships, sisterhood, and tradition. This will be your last chance to interact with members before final selections are made.



Attire for Preference Round is typically more formal than other rounds of recruitment. Many potential new members wear a cocktail dress or a similar outfit with heels or wedges. A great way to think of attire for this round is what you would wear to an evening wedding. Students wear all kinds of dresses of other formal outfits during this round of recruitment. Dress in a way that makes you feel like your best self. There is less walking and standing during this round which makes it easier to wear heeled shoes. This round is typically more serious and formal, chapters are focused on having meaningful conversations with you!



# ROUND I

## Open House

AUGUST 15TH - AUGUST 16TH, 2023

Round I of Formal Recruitment is an open house round, meaning, all potential new members will visit all participating Panhellenic chapters over two days. This round of recruitment focuses on the importance and excitement of "going Greek" and a great opportunity to visit with all of our amazing Panhellenic chapters.

### The Basics

Spend some time checking out our Panhellenic chapters prior to recruitment beginning. We suggest learning a little about the basics of each chapter through their websites and social media.

- Round I is August 15th-16th, 2023
- 11 parties attended over two days
- You will be grouped alphabetically and will be lead to each chapter facility by Rho Gammas.

### WHAT TO EXPECT

These days can feel very long - you'll get to meet a lot of people. Find a method to keep track of the chapters you visit with to help with your selections at the end of Round I, one common method is jotting down notes in a journal after each party.

We suggest keep a water bottle, some supplies to freshen up as well as a way to take notes between parties. It can be very hot in during this time in Oklahoma, please hydrate!

### TIPS & TRICKS

This is a "get to know you" round. Members will be asking about yourself so have some talking points ready.

Round I is a great opportunity to ask general questions about sorority life at OU. You can ask more specific questions about the chapter later on during recruitment.

You may be conversing in a group - be an active listener and get to know the students around you in your Tour Group!

# ROUND II

## Philanthropy

AUGUST 17TH, 2023

Round II of Formal Recruitment is focused largely on the Panhellenic pillar of philanthropy. Potential new members (PNM) can attend a maximum of 8 chapters after making selections following Round I. Each PNM will have their own party schedule that their Rho Gammas will deliver the morning of Round II. PNMs will learn about chapter philanthropies and the event will focus on conversation surrounding service and philanthropy.

### The Basics

- Round II is August 17th, 2023
- PNMs can attend a maximum of 8 chapters
- From Round II on, each PNM will have an individualized party schedule that will be delivered to their residence hall room by their Rho Gamma in the morning.

### WHAT TO EXPECT

Chapters will be telling you about the philanthropy and service they enjoy doing in the OU and Norman community.

Think about what philanthropic work you are passionate about or what service you have done in your own community. Ask about ways you can serve as a sorority member.

Don't hesitate to promote your own passion and work in philanthropy and community service. Chapters want to know how you give back to your community.

Many chapters will share presentations on their philanthropy and the role it plays in their organization. Ask them questions! This is an opportunity to know more about each philanthropy, their service events, and the member connection to their philanthropy.

### TIPS & TRICKS

The Oklahoma weather can be unpredictable so we suggest you prepare for warm weather as well as rain. Many PNMs bring small, handheld fans and water to keep cool and hydrated throughout the day.

Since you will be visiting up to 8 chapters, we suggest you jot down quick notes after parties so you can remember your conversations and feelings throughout the round.

# ROUND III

## Sisterhood

AUGUST 18TH, 2023

Round III is our sisterhood round - a round that gives potential new members (PNMs) and chapter members the chance to connect about the values that drive their actions. PNMs can attend a maximum of 5 parties, each containing a tour of the chapter facility, longer conversation time to dig deeper into the values and sisterhood of our organizations, and more time for questions.

### The Basics

- Round III is August 18th, 2023
- PNMs can attend a maximum of 5 chapters
- From Round II on, each PNM will have an individualized party schedule that will be delivered to their residence hall room by their Rho Gamma in the morning.

### WHAT TO EXPECT

Round III is focused on sisterhood, campus involvement, financial commitments and values. Think about these things before the round begins.

Share with the chapters what you are looking for in a sisterhood and what you value in a friendship. This will help you understand how you may fit into their sisterhood.

Think about asking questions about the chapter's sisterhood traditions, fees/dues related to the chapter, and what they do on campus. Find where you feel values match up.

This is a great time to learn about what the life of a member in these chapters is like. Take this opportunity to picture yourself growing bonds in each of the chapters you visit. You may have to make hard decisions following this round so be present in your conversations!

### TIPS & TRICKS

Round III is focused on going deeper into intentional conversations. Do not be afraid to ask chapter members questions about why their organization means so much to them!

This round of recruitment contains a house tour, so think about that when choosing your shoes.

The chapters will also be discussing the financial commitments of membership. This is a great time to ask financial questions you may have - it is important piece of the membership experience.

# ROUND IV

## Preference

AUGUST 19TH, 2023

Preference round is the last round of Formal Recruitment before Bid Day! An invitation to preference round means the particular sorority is very interested in extending membership to you. The parties will focus on the core aspects of sorority life, including friendships, sisterhood, and tradition. This will be your last chance to interact with members before final selections are made.

### The Basics

- Round IV is August 19th, 2023
- PNMs can attend a maximum of 2 chapters
- Party rounds are 60 minutes
- Each PNM will have an individualized party schedule that will be delivered to their residence hall room by their Rho Gamma in the morning.

## WHAT TO EXPECT

Parties during Preference round are longer than previous rounds. Expect to spend more time with chapter members. The conversation will be much deeper and meaningful, enjoy your time with the members!

Preference round is a great time to ask any last-minute questions you might have. Chapter and Panhellenic team members are happy to help. We understand it is a big decision!

This is a time to reflect on all you learned about the chapters. During this round, you will deepen your connections with the chapters that were formed each round.

You will make final selections after your last party so it is important to be present throughout this round.

## TIPS & TRICKS

Preference round can be a long day with a lot of down time. Use this time to reflect on your experience and all that you learned during recruitment!

Make sure your phone is charged. You will make your final selections after your last party with Panhellenic on your phone.

After each party, take a few moments to reflect on what the chapter you visited means to you and how you may see yourself within it.

The decision following this round may be difficult so we encourage you to reach out to Rho Gammas or Panhellenic team members if you need any support!

# SCHEDULE

2023 Summer & Fall

## MONDAY, MAY 15

### Recruitment Registration Opens

Register for Fall Formal Recruitment at [pan.ou.edu](http://pan.ou.edu).

## TUESDAY, AUGUST 1

### Registration Deadline

Last date for refund request minus \$15 service charge.

## AUGUST 8 - 10

### Residence Hall Move In

Potential new members arrive and move into residence hall.

## THURSDAY, AUGUST 10

### Recruitment Registration Closes

Registration closes at the end of the business day (5:00 PM CT).

## MONDAY, AUGUST 14

### Orientation & Hall Group Meeting

Today you will attend an Welcome & Orientation with Panhellenic and then your first hall floor meeting with your Rho Gammas.

## AUGUST 11 - 18

### Camp Crimson

Incoming students attend an orientation camp for OU. Students will be able to participate in both Camp Crimson and Fall Formal Recruitment.

## TBA

### Formal Recruitment Check-In

Before recruitment actually begins, students will check-in with Panhellenic. You will receive your two t-shirts and nametag to participate in recruitment. You will be emailed with the specific dates and times of check-in as well as the required paperwork to complete *before* come to check-in.

## TUESDAY, AUGUST 15

### Round I - Open House

Potential new members will visit all 11 chapters over two days.

## WEDNESDAY, AUGUST 16

### Round I - Open House

Potential new members will visit all 11 chapters over two days.

## THURSDAY, AUGUST 17

### Round II - Philanthropy Day

Potential new members attend a maximum of eight parties.

## FRIDAY, AUGUST 18

### Round III - Sisterhood

Potential new members attend a maximum of five parties.

## SATURDAY, AUGUST 19

### Round IV - Preference

Potential new members attend a maximum of two parties. PNMs will attend mandatory educational sessions during this round of recruitment. These sessions are required to receive a membership bid.

## SUNDAY, AUGUST 20

### Round V - Bid Day

Matched potential new members will receive their bids and attend activities with their new chapter

## MONDAY, AUGUST 21

### First Day of Classes

Classes begin at the University of Oklahoma. We suggest using any down time during the formal recruitment process to prepare for the first day of classes. Your Rho Gammas will be a great resource for you as you prepare for the fall 2023 semester!



# FORMAL RECRUITMENT

## Guidelines & Policies

### Formal Recruitment Guidelines

- A student must be an enrolled, full-time undergraduate student at the University of Oklahoma (Norman or OUHSC campus) to be eligible to participate in formal or informal recruitment activities.
- Potential new members must register with the University of Oklahoma Panhellenic Association and pay the registration fees in order to participate in Formal Recruitment.
- All students participating in Formal Recruitment are not required to live in the OU residence halls during the week of recruitment.
- PNM's must abide by the Membership Recruitment Guidelines published in the OU Panhellenic Recruitment Guidebook and National Panhellenic Conference Unanimous Agreements.
- PNM's participating in Formal Recruitment must wear their nametags provided by the Panhellenic Association during all Formal Recruitment activities.
- PNM's participating in Formal Recruitment may not visit any fraternity chapter from August 8 - August 21, 2023. Sorority members may not visit chapter facilities during fraternity recruitment.
- PNM's must attend all Formal Recruitment events at the designated times. A PNM must receive prior approval from the Panhellenic Advisor to miss any event during the week.
- A PNM participating in Formal Recruitment shall not be, nor have ever been, an initiated member of a NPC organization.
- A student is ineligible for Panhellenic membership recruitment if they have been a new member of a NPC sorority at OU in the same calendar year.
- A student shall complete the Membership Recruitment Acceptance Binding Agreement card immediately following the last preference event they attend. Once a MRABA has been signed and submitted, no changes may be made. For questions, please ask the Panhellenic Recruitment Team.
- A student signing a MRABA card and receiving a bid at the end of Formal Recruitment shall be bound to the chapter they matched with by the agreement for one calendar year at OU per NPC policies.
- Failure to follow any of these rules could result in dismissal from the Formal Recruitment process.

### Summer Contact

The National Panhellenic Conference has amended the summer contact policies. Chapters may reach out to PNM's to promote the overall sorority experience - not recruit their own organization. This contact should be in the Panhellenic spirit. Should a PNM not feel comfortable with this contact, please reach out to Panhellenic at [panhellenic@ou.edu](mailto:panhellenic@ou.edu).

This year, a few of the Rho Gammas have offered to be a point of contact for PNM's if they have any questions for them. We will email those students and their contact information later this summer.

No student is eligible to join a sorority in the summer months or anytime when school is not in session with the exception of the end of Formal Recruitment.

### Legacy Information

A legacy is defined as a daughter or sister of an initiated sorority member unless an international or national organization recognizes additional relations.

A legacy may not be given any gifts by the legacy sorority. Nor may they be allowed to purchase merchandise from a chapter.

PNM's may not spend the night at a sorority house unless prior approval is obtained from the Panhellenic Advisor. However, a legacy is permitted to spend the night at a legacy house, upon invitation, during the academic year.

### ZERO TOLERANCE POLICY

If an individual breaks any of policies outlined in the Panhellenic Association's PNM Code of Ethics, they may be completely removed from the Formal Recruitment process.

# RECOMMENDATION LETTERS

A letter of recommendation, sometimes referred to as a "rec" or a RIF (Recommendation Information Form) is a recruitment information form that is completed by an alumna of a specific sorority. These forms are used to introduce a potential new member to the alumna's sorority chapter at the University of Oklahoma.

## Recommendation Information

Some sororities might require a letter of recommendation, but it is important to understand that, if a sorority requires a recommendation it is that individual sorority's responsibility to obtain said recommendation, not the responsibility of the PNM.

It is permissible for a PNM to ask a sorority alumna member to complete a recommendation for her own chapter. However, it is inappropriate for a PNM (or anyone on the PNM's behalf) to contact an alumna member that they do not know to ask for a recommendation. Each national sorority has its own guidelines and its own recommendation forms the alumna must use. If an alumna is not familiar with her own sorority's regulations, she should contact the national organization.

There is a lot of helpful information on our Recommendation Letters page of our website, [pan.ou.edu](http://pan.ou.edu). Please refer to this guide for questions about the recommendation process - QR code to the website is provided for you below. If you have additional questions, feel free to reach out for assistance. Our team is happy to help.

## Tips & Advice

- Always send a thank you note. Alumnae members are busy and sending them a brief note will show them your appreciation of them and their time.
- Know what to send. Chapters need only the recommendation forms from alumnae members. They do not need packets, gifts, or anything else mailed to their facilities. Forms can be sent to the chapter facilities themselves, the Panhellenic Office, or emailed.
- Get them in early. There is no official deadline for when letters of recommendation must be received, but we suggest before August 1 to give the chapters ample time to process the paperwork.
- Use your network. If you are worried about finding a reference, ask teachers, coaches, family friends, or anyone else you feel comfortable talking to. You might find you know more sorority members than you think.

## CHAPTER MAILING & WEB ADDRESSES

### Alpha Chi Omega

1115 College Avenue  
Norman, OK 73072  
[oualphachi.com](http://oualphachi.com)

### Alpha Gamma Delta

930 Chautauqua Avenue  
Norman, OK 73069  
[alphagammadelta.org](http://alphagammadelta.org)

### Alpha Omicron Pi

1411 Elm Avenue  
Norman, OK 73072  
[ou.alphaomicronpi.org](http://ou.alphaomicronpi.org)

### Alpha Phi

1401 College Avenue  
Norman, OK 73072  
[oklahomaalphaphi.org](http://oklahomaalphaphi.org)

### Chi Omega

820 Chautauqua Avenue  
Norman, OK 73069  
[ou.chiomega.com](http://ou.chiomega.com)

### Betta Beta Beta

1611 College Avenue  
Norman, OK 73072  
[ou.tridelta.org](http://ou.tridelta.org)

### Betta Gamma

744 Elm Avenue  
Norman, OK 73069  
[oudeltagamma.com](http://oudeltagamma.com)

### Gamma Phi Beta

1105 College Avenue  
Norman, OK 73072  
[gammaphibeta-ou.org](http://gammaphibeta-ou.org)

### Kappa Alpha Theta

845 Chautauqua Avenue  
Norman, OK 73069  
[outheta.com](http://outheta.com)

### Kappa Kappa Gamma

700 College Avenue  
Norman, OK 73069  
[ou.kappa.org](http://ou.kappa.org)

### Pi Beta Phi

1701 Elm Avenue  
Norman, OK 73072  
[ou.pibetaphi.org](http://ou.pibetaphi.org)

# TERMS TO KNOW

## ACTIVE

A fully initiated member of a sorority who is currently participating as a member.

## ALUMNAE

Sorority members who are no longer active, collegiate members of a Panhellenic organization.

## BADGE

Also known as a pin, the badge is an item of jewelry given to members upon invitation. Badges are often worn to chapter events and functions.

## BID

An invitation to join a Panhellenic sorority. Bids are given during formal or informal recruitment to potential new members. Once a PNM accepts a bid, they become a new member.

## BIG SISTER

Nickname for a big sister, a mentor assigned to a new member. Many organizations have special names and ceremonies for these pairings.

## CHAPTER

A branch of a national fraternity or sorority established at a campus. Each will have their own name, usually designated by Greek letters.

## CONTINUOUS OPEN BIDDING

Continuous Open Bidding, (COB) is the chapter-driven recruitment process that can occur all year. COB eligibility is set at the start of each semester when chapters turn in their most updated rosters to the Panhellenic office. Any chapter falling below the median chapter size can recruit up to that number.

## INITIATION

A ceremony during which new members receive a full and life-long membership privileges. Initiation ceremonies are held during the first semester of membership

## INTENTIONAL SINGLE PREFERENCE (ISP)

When a student only lists one sorority on their Membership Recruitment Acceptance Binding Agreement (MRABA) form when two options are available. Students who ISP are not maximizing their options.

## LEGACY

The daughter, sister, grandchild (and in rare cases, niece) of an organization's member. National organizations determine legacy status for that specific organization.

## LITTLE SIBLING

Sometimes called "little." This is the nickname for a Big's new member that they mentor during their collegiate career.

## MAXIMIZING YOUR OPTIONS

A phrase used during primary, fall formal recruitment process. To maximize your options means to utilize all the options available to you. At the University of Oklahoma, you are required to maximize your options in each round with the exception of Preference Round (Round IV). Maximizing your options is always recommended.

## NATIONAL PANHELLENIC CONFERENCE

Also known as "NPC." NPC provides support and guidance for its 26 member national or international sororities/women's fraternities and organizations.

## NEW MEMBER

A student who has accepted a sorority bid but is not yet an initiated member.

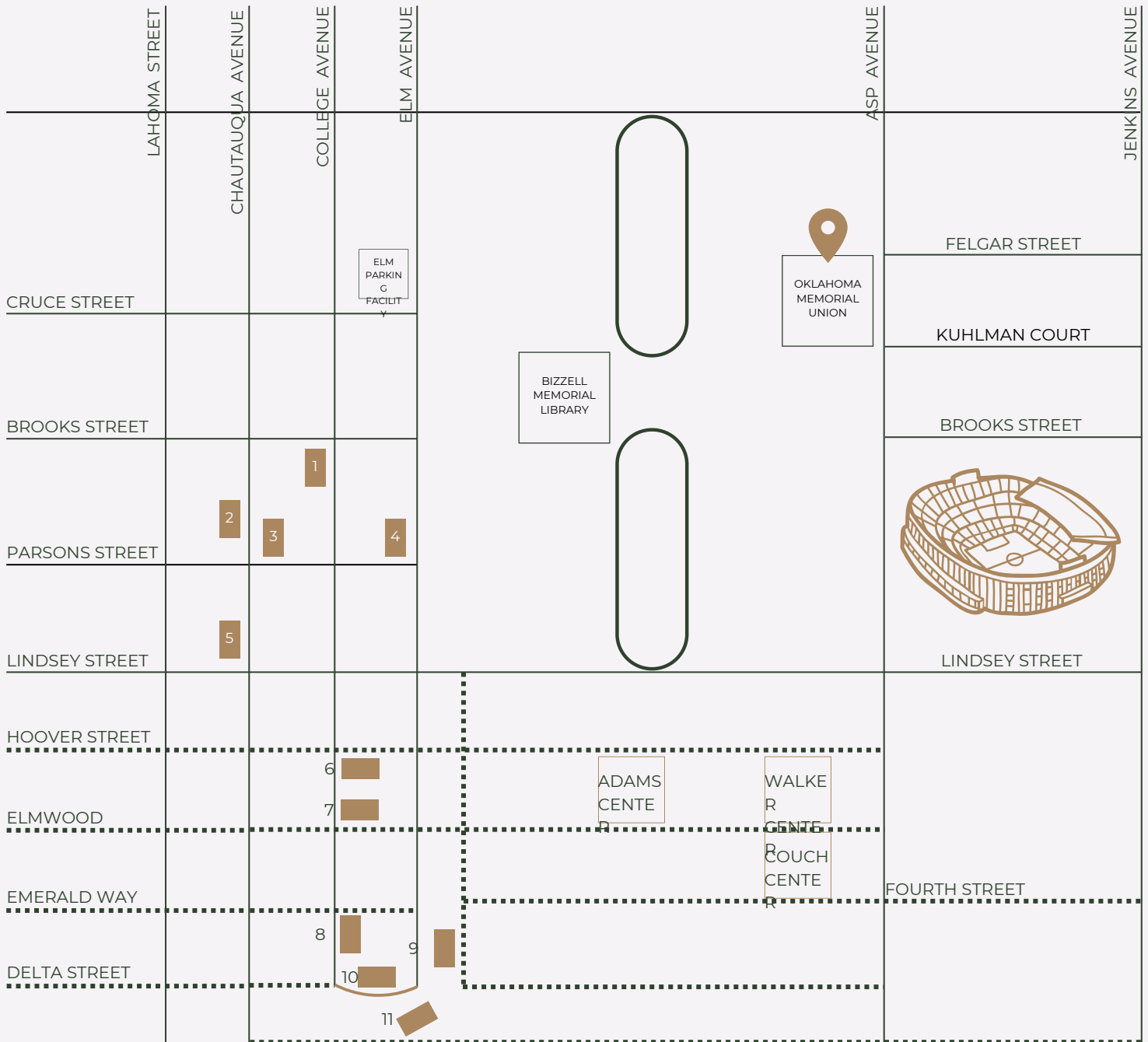
## PARTY

When a PNM attends a round of recruitment, that specific event is called a "party."

## POTENTIAL NEW MEMBER

A PNM is a student participating in any kind of Panhellenic recruitment process.

# PANHELLENIC FACILITY MAP



## SORORITY CHAPTER FACILITIES

- 1 Kappa Kappa Gamma (KKG)
- 2 Chi Omega (ChiO)
- 3 Kappa Alpha Theta (KAT)
- 4 Delta Gamma (DG)
- 5 Alpha Gamma Delta (AGD)
- 6 Gamma Phi Beta (GPhiB)
- 7 Alpha Chi Omega (AChiO)
- 8 Alpha Phi (APhi)
- 9 Alpha Omicron Pi (AOPi)
- 10 Delta Delta Delta (DDD)
- 11 Pi Beta Phi (PiPhi)



Fraternity and Sorority Programs and Service  
Office of Student Life

Jim Thorpe Multicultural Center  
1620 Asp Avenue  
Norman, OK 73019

(405) 325-3163

# CONTINUOUS OPEN BIDDING

## Informal Recruitment

Continuous open bidding (COB), sometimes referred to as "Informal Recruitment," is a way for students interested in joining our Panhellenic system to become members in an informal process. COB is a chapter-driven process through which chapters invite students to recruitment events independent from Panhellenic. This type of recruitment process happens in the spring and fall terms.

### Fall Semester

The interest form for Fall 2023 COB will open at 9:00 AM on August 21. You may access the form at [pan.ou.edu](http://pan.ou.edu) or by visiting the Panhellenic Engage portal.

Chapter participation will be determined following Formal Recruitment 2023. For questions on chapters that will be COB eligible, please email [panhellenic@ou.edu](mailto:panhellenic@ou.edu) after 9:00 AM on August 21.

Last fall, five chapters were COB-eligible and about 90 students joined our community through the informal recruitment process.

It is important to note that if you should decide to go through the formal recruitment process and be matched with a chapter after preference round, you will **NOT** be eligible to participate in COB. If you are matched to an organization, you are not eligible to participate in any kind of Panhellenic recruitment process at OU until the start of the next primary recruitment period (Fall 2023 Formal Recruitment).

Our team can help you determine your eligibility should you have questions.

### Spring Semester

The interest form for Spring 2024 COB will open mid-December 2023. You may access the form at [pan.ou.edu](http://pan.ou.edu) or by visiting the Panhellenic Engage portal.

Chapter participation will be determined following the reset of total on the Wednesday of the first week of classes. For questions on chapters that will be eligible for COB, feel free to reach out to Panhellenic mid-January.

Typically four to five are COB eligible since campus total is set by the average chapter size. Last spring 100 women joined our community through the informal recruitment process.

In the spring, Panhellenic will host an informational meeting the first week of the spring term. Follow us on social media to hear about that event as the date approaches. Anyone who completes the interest form before the first week of school will be emailed a reminder about the meeting.

Should you participate in 2023 Formal Recruitment and be matched with a chapter after preference round, you will **NOT** be eligible to participate in COB during the Spring 2024 term. Let us know if we can help assist you in determining your eligibility.

Registration for COB is free! You can access the form at [pan.ou.edu](http://pan.ou.edu) or by visiting the Panhellenic Engage portal. The information you provided will be sent to COB-eligible chapters in that semester. Should you wish to participate in COB in different semester, that form will need to be filled out for each term participation occurs.

# Common Questions

## HOW CAN I SIGN UP?

Signing up for COB is quick and easy. You can visit [pan.ou.edu](http://pan.ou.edu) or the Panhellenic Engage portal to fill out the form. This information you provide in this form will be distributed to all COB-eligible chapters. Please note that COB forms must be filled out each semester a student is interested in membership.

## WHAT CHAPTERS PARTICIPATE IN COB?

Unlike Formal Recruitment, not all of our 11 chapters will participate in COB. Each term, campus total is calculated using chapter median size, or the previous fall's total size (whichever is larger). Any chapters that are not at or above the campus total number are eligible to participate in COB.

Our team will know what chapters are COB-eligible after the following dates. Feel free to reach out to [panhellenic@ou.edu](mailto:panhellenic@ou.edu) to inquire for either semester:

- Fall 2023 after 9:00 AM on August 21nd
- Spring 2024 after the Wednesday of the first week of classes

## HOW WILL CHAPTERS KNOW I WANT TO PARTICIPATE?

The Panhellenic Recruitment Team will give you a copy of your completed interest form to the chapters who are eligible to participate in COB for the semester. The chapters will then contact you directly if they are interested in inviting you to one of their recruitment or COB events.

These COB events are often informal in nature. Some examples can include: dinner at a chapter house, grabbing coffee with current members, a movie night or game night with the chapter, attending an OU event, or sporting event together. Chapters arrange these events and often control the guest lists.

## HOW CAN I FIND OUT IF I AM COB-ELIGIBLE?

COB-eligibility is determined on several factors. If you have never gone through a Panhellenic recruitment process and have never been affiliated in any way with a NPC organization, you are COB eligible!

Students who went through the Formal Recruitment process and were matched with a chapter after preference round are not COB eligible until the following year.

*Let's Chat!*

If you have questions, you can contact us at:  
[panhellenic@ou.edu](mailto:panhellenic@ou.edu)  
(405) 325-3163

# FREQUENTLY ASKED QUESTIONS

Greek or Panhellenic membership can come with many questions. We have provided some frequently asked questions our team often receives. However, if you have additional questions or need assistance, please don't hesitate to reach out. The Panhellenic team is always happy to assist where we can. You can reach us at [panhellenic@ou.edu](mailto:panhellenic@ou.edu) or by calling (405) 325-3163 during business hours (Monday - Friday from 9:00 AM - 5:00 PM).

## HOW MUCH TIME DOES A SORORITY REQUIRE?

There is a required meeting once a week where you will exchange information on chapter events and organization education. Weekly chapter study sessions are an option for all members, along with events such as sisterhood activities, community service projects and social events.

## ARE UPPERCLASSMEN ALLOWED TO PARTICIPATE IN RECRUITMENT ACTIVITIES?

Many sororities look for a four-year commitment; however, most of our groups do consider upperclassmen in their recruitment process. Fewer upperclassmen than freshman participate in Formal Recruitment and fewer join chapters. We cannot predict any one person's recruitment experience. The best advice is to go through the process with an open mind.

## IS THERE A GPA REQUIREMENT TO PARTICIPATE IN FORMAL OR INFORMAL RECRUITMENT?

The OU Panhellenic Association does not require a certain GPA to participate in Formal Recruitment. However, each sorority has a minimum GPA to be considered for membership and initiation. The average GPA to join is around a 3.25 and the average GPA for an upper class student is around a 3.00. These grades are pulled from university records.

## DO I NEED TO ATTEND ALL PARTIES USED ON MY RECRUITMENT SCHEDULE?

Yes. The objective of recruitment as a potential new member is to learn as much as you can about the OU Greek community and the chapters so you can make an informed decision regarding membership.

If you intentionally miss an event you were invited to, you are not maximizing your options and will be released from the Formal Recruitment process. Your Rho Gammas will be helpful in answering questions about maximizing your options and what that looks like for you as a PNM.

## HOW LONG DOES IT TAKE TO BE INITIATED?

Most chapters have an initiation period that ranges from four to 12 weeks. The new member period offer opportunities to meet other members, learn organization history, and establish a level of comfort within the chapter. Each chapter builds its own new member program and sets its own initiation dates.

## WHAT DOES IT MEAN TO "MAXIMIZE MY OPTIONS"?

When a PNM makes a selection, it is in their best interest to rank all of the chapters they attended during that round. By ranking all chapters, they maximize their ability to receive an invitation from any chapter for the next round.

If a PNM does not maximize their options, it is possible that they will receive zero invitations for the next round. OU Panhellenic strongly discourages intentional single preferences (ISP), but we will fully support the students' decision if they want to make this choice. ISP limits PNMs' chances of receiving a bid. We will cover this in much more detail prior to selections each round of recruitment, especially preference round.

## WILL ALL PARTICIPANTS PLEDGE A SORORITY AT THE END OF THE FORMAL RECRUITMENT PROCESS?

Recruitment is a process of mutual selection and, as such, there are many different outcomes to their process. Participation in Formal Recruitment does not guarantee an invitation to join a sorority, nor does it obligate you to join.

However, approximately 80-90% of the students participating in Formal Recruitment each year join a sorority at the end of the process! We encourage all participants to go through our process with an open mind. An open mind allows students to meet others and find the chapter they feel the most at home in.

Some students do decide that sorority life is not for them during the recruitment process - and that's ok! We work with these students to get them plugged in on campus if they decide to withdraw from formal recruitment.

## WHAT IF I WANT TO BE IN A CERTAIN SORORITY?

Only wanting to be a member of one specific sorority or only considering a few chapters can severely limit a PNM's options for membership and can lead to disappointment. Panhellenic discourages joining a sorority based on stereotypes or other's opinions. We encourage you to keep an open mind and make a decision that is best for you.

## WHAT SHOULD I BRING TO RECRUITMENT?

Panhellenic will provide 2 t-shirts to be worn during Round 1 - Round 3 of the Formal Recruitment process.

Other helpful hints:

- Consider bringing a change of shoes. There is a lot walking during recruitment from chapter facility to facility.
- Plan ahead. Many students find it helpful to bring a bag with them with face towels, personal fans, cosmetic products or band aids. Again, long days and lots of walking in the Oklahoma summer heat!
- Water is provided for students going through the recruitment process, but bringing a water bottle is advised as well.
- Don't be afraid to ask for tips. Recruitment Guides are great resources for students participating in the recruitment process and can provide helpful advice for a positive experience.

## WHAT IS A LEGACY?

A legacy can be defined differently by each chapter, but most commonly, a legacy is defined as a potential new member who is the sister, daughter, or granddaughter of an alumnae sorority member.

## AM I GUARANTEED A BID IF I AM A LEGACY?

If you are a legacy, you are not guaranteed a bid to your legacy's chapter. It does not hurt or help to be a legacy; it just notifies our chapters that you have a family member that was a part of that specific organization. Each chapter looks at the individual going through and will make their decision on what is best for their group at that time. We would encourage you to go through the process with an open mind.

The Panhellenic Association allows students to claim a legacy on their recruitment registration form. However, only the chapter(s) you claim will see that you are a legacy of that specific organization. We do not share legacy status with any other chapters.

## ARE LETTERS OF RECOMMENDATION REQUIRED?

No. Letters of Recommendation are not required by Panhellenic and most individual chapters for membership.

However, many students choose to ask alumnae of various organizations to complete a RIF (Recruitment Information Form), sometimes called a "rec letter" on their behalf. IF you choose to do this, we recommend having those forms to the chapters by August 1.

If you do not know an alumna of a certain chapter, it is inappropriate for you to ask someone that you do not know to complete a recommendation form for you. Each chapter knows that it is their responsibility to find a recommendation for students going through the recruitment process that they would like to pledge.

*Don't see your question?*

If you don't see the answer to your question here, feel free to reach out to us! We are here to make the transition to college and the experience of recruitment easy! We regularly update information on our website: [pan.ou.edu](http://pan.ou.edu)

You can contact us directly at:  
[panhellenic@ou.edu](mailto:panhellenic@ou.edu)  
(405) 325-3163



# QUESTIONS?

*Let's Chat!*

## CONNECT WITH PANHELLENIC



### OFFICE OF STUDENT LIFE

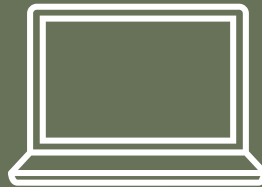
Jim Thorpe Multicultural Center  
1620 Asp Avenue  
Norman, OK 73019



PANHELLENIC@OU.EDU



(405) 325-3163



WWW.PAN.OU.EDU



@OUPANHELLENIC  
(Instagram & Facebook)

# WE CAN'T WAIT TO SEE YOU IN AUGUST!

*Oklahoma Panhellenic Association*

# Recruitment Guides

## Advice and Well Wishes

As we will not see you until August, some of the Rho Gammas for this upcoming year have offered a few well wishes as you head into the summer!

G  
I  
L  
L  
I  
A  
N  
A



*"Having an open mind and heart is the key to success. You never know who could be your future sisters or best friends. Take advantage of the time you have and create new friendships and relationships with the amazing women around you!"*

Gilliana Sosa  
Hometown: Dallas, TX  
Chapter: Alpha Gamma Delta

S  
Y  
D  
N  
E  
Y



*"Try not to focus too much on what everyone else is wearing, just wear what represents you and your personality! The place you belong will love you for you and nothing less!"*

Sydney Helt  
Hometown: Tulsa, OK  
Chapter: Alpha Phi

C  
H  
L  
O  
E



*"The best thing about OU Panhellenic is the connections you make. No matter where you end up, the friends you make and the relationships you build during recruitment are worthwhile! Be confident, be open, and most importantly, be yourself!"*

Chloe Taubman  
Hometown: Norman, OK  
Chapter: Kappa Alpha Theta

M  
E  
G  
A  
N



*"Enjoy this time to meet both the older members in the 11 wonderful chapters and your 1000+ fellow PNMs! Recruitment is a great opportunity to form relationships with incredible people."*

Megan Szymanski  
Hometown: Norman, OK  
Chapter: Pi Beta Phi

# Coca-Cola®

step up your refreshment



proud supporter of

**STUDENT  
LIFE**

# STUDENTaffairs

Norman | Oklahoma City | Tulsa | Arezzo, Italy

ou.edu/studentaffairs | (405) 325-3161

## what we do...

- Assist students in realizing their goals – academic, personal, and professional.
- Provide diverse cultural experiences to the University community.
- Offer programs designed to enhance the academic experience.
- Provide leadership development opportunities.
- Create a safe and healthy environment in which students may live, study, socialize and work.

## Stay connected!



OU STUDENT AFFAIRS



@OU\_STUDENTAFFAIRS



@STUDENTS\_OU



STUDENT AFFAIRS  
The UNIVERSITY of OKLAHOMA

## departments, programs & services

Career Services  
Esports and Co-Curricular Innovation  
Fitness + Recreation  
Gender + Equality Center  
Graduate Recruitment & Welcome  
Health Services  
Henderson Scholars  
Housing and Residence Life  
Leadership & Volunteerism  
New Student Programs  
OU Food Pantry  
Parent and Family Programs  
President's Community Scholars  
President's Leadership Class  
SafeRide  
Sooners Helping Sooners  
Student Legal Services  
Student Life  
Student Media  
Student Conduct  
University Counseling Center  
What To Do

# Betty Lou's Flowers & Gifts

BETTYLOUSFLOWERS.COM

## Rush Week Gifts

- Bid Day house flowers
- Good Luck flowers
- Birthday cupcakes
- Sorority house gifts
- Succulents and plants
- OU gifts
- Snack baskets

Call or visit us online today  
to order your mid-week or  
Bid Day gifts



BETTY LOU'S  
*flowers and gifts*

(405) 364 - 2400  
445 West Gray Street  
Norman, OK 73069  
bettylousflowers.com

Same Day Delivery to OU. Call Before 1:00 PM!



**go greek** with Occasions

occasionspaper.com • 405.217.8467 • @occasionspaper



CELEBRATE



# Christmas Expressions



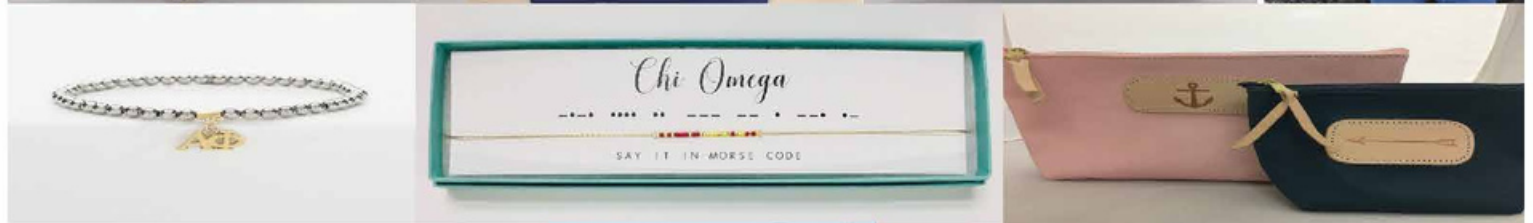
Recruitment

Bid Day

Proudly delivering Great Greek Gifts for 44 years!

Largest Greek selection in Norman! Make your gift unique!

We offer custom gift assortments for RECRUITMENT WEEK, BID DAY and all special events.



Rustic CUFF

dot & dash DESIGN



JON HART



2214 WEST LINDSEY, NORMAN

405.360.5211

FOLLOW US ON FACEBOOK AND INSTAGRAM







# GREEK NECESSITIES

[greeknecessities.com](http://greeknecessities.com) | [greeknecessities1@gmail.com](mailto:greeknecessities1@gmail.com) | [@greeknecessities1](https://www.instagram.com/greeknecessities1)

*Sorority Gifts For Every Occasion*

## Recruitment Week and Bid Day Gift Ideas



Recruitment Week is such a fun and exciting time for your daughter. Greek Necessities will be offering a thoughtfully curated gift for each day of recruitment. We will deliver to Panhellenic each day, then Panhellenic will contact your daughter and let her know she has a gift. We are also offering a Bid Day Gift which will be delivered to the sorority house on Bid Day.



# savvy blake

BECAUSE EVERYDAY  
IS A PARTY

Hi! We are so excited you have chosen the University of Oklahoma! We are a new store on campus that offers women's clothing, accessories, gifts, party, Greek licensed products, and so much more! We are locally owned and operated and can't wait to make your daughters recruitment week special!

Savvy Blake is offering recruitment week and bid day baskets for your daughter! We have pre made baskets or you can choose to make your own! Just call the store or come visit us for all you gifting needs!



405-857-7902 | @partywithsb | www.savvy-blake.com  
731 Asp Ave #A Norman, OK | Mon-Sat 10am-6pm