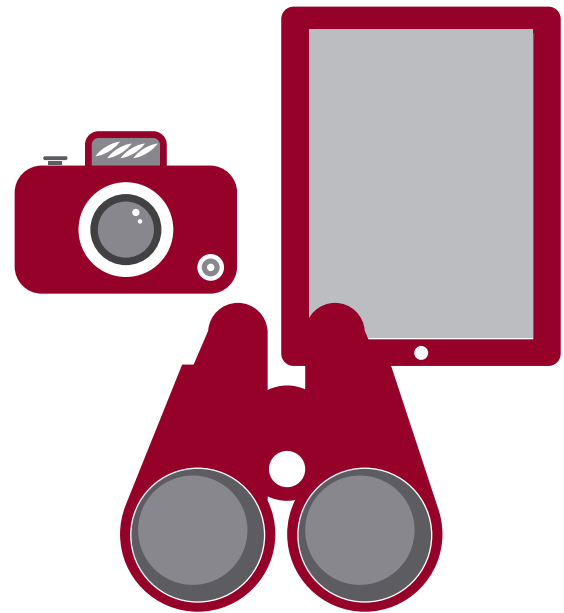




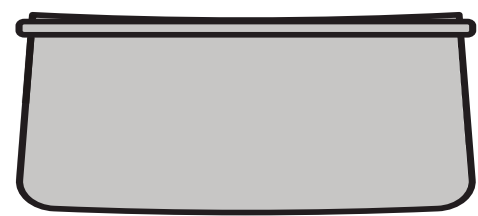
OKLAHOMA ATHLETICS

# ATHLETICS CARRY IN POLICY

## ITEMS PERMITTED



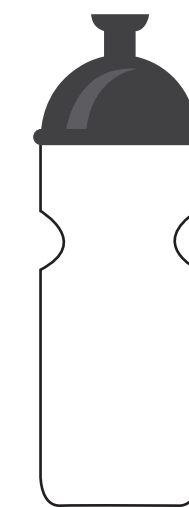
**BINOCULARS, CAMERAS & TABLETS**



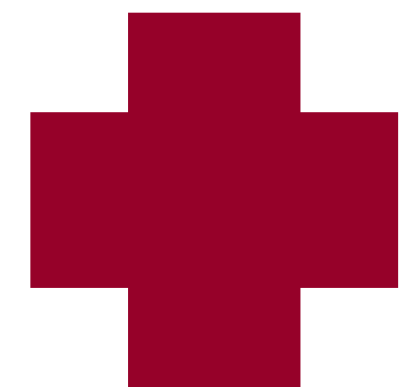
**6.5" X 4.5" CLUTCH WALLET**  
(WITH OR WITHOUT STRAP)



**12" X 6" X 12" CLEAR TOTE**  
(ANYTHING LARGER IS PROHIBITED)  
**CLEAR FANNY PACK**  
**CLEAR CROSSBODY BAG**



**TRANSPARENT/EMPTY WATER BOTTLE**

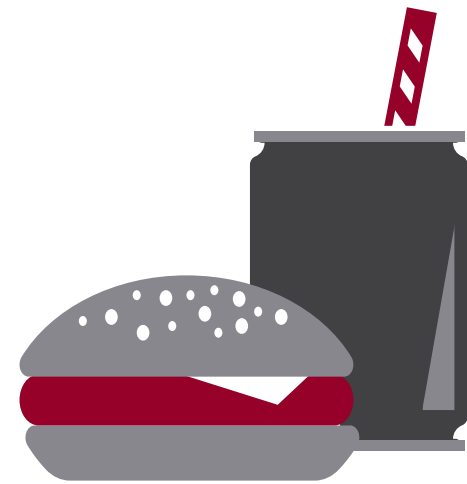


**ITEMS RELATED TO A MEDICAL CONDITION**

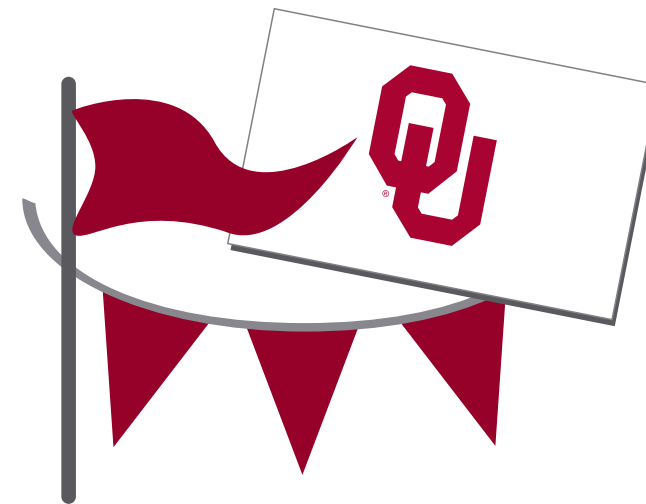
## ITEMS PROHIBITED



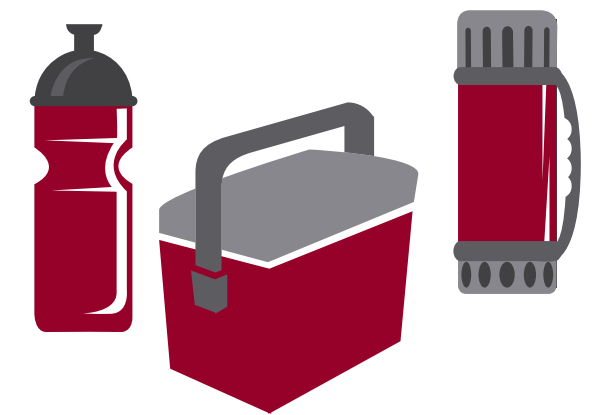
**NO PURSES, BACKPACKS, DRAWSTRING BAGS, FANNY PACKS, DIAPER BAGS, CROSSBODY BAGS & BINOCULAR CASES**



**NO FOOD OR BEVERAGES**  
(INCLUDING ALCOHOL)



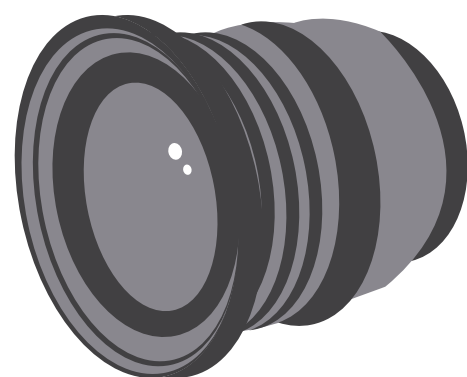
**NO FLAGS, SIGNS OR BANNERS**



**NO CONTAINERS**



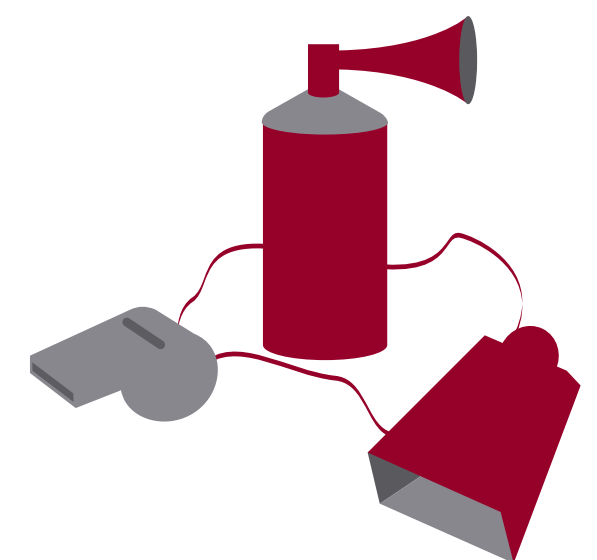
**NO STROLLERS OR BABY CARRIERS**



**NO VIDEO CAMERAS OR CAMERAS WITH LENSES GREATER THAN 6"**



**NO CHAIRBACKS OVER 16" WIDE OR WITH OVERSIZED METAL FRAMES.**



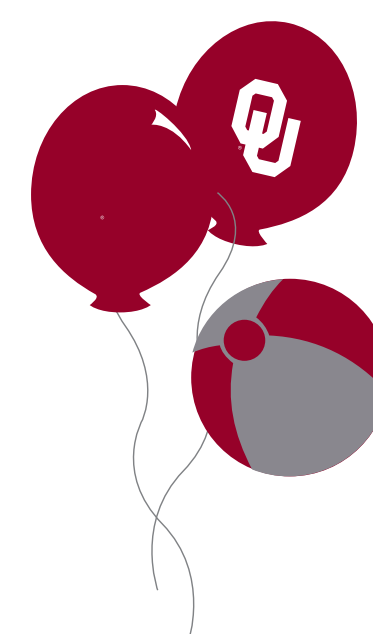
**NO NOISEMAKERS**



**NO WEAPONS**



**NO UMBRELLAS**



**NO INFLATABLES**

ALL CARRIED ITEMS AND ENTRANTS ARE SUBJECT TO SEARCH. PROHIBITED ITEMS MUST BE RETURNED TO THE OWNER'S CAR OR DISCARDED. ANY UNLAWFUL ITEMS ARE SUBJECT TO CONFISCATION, AND THE PERSON IN POSSESSION OF SUCH ITEMS IS SUBJECT TO ARREST. ITEMS LEFT AT THE GATE WILL BE DISCARDED.