

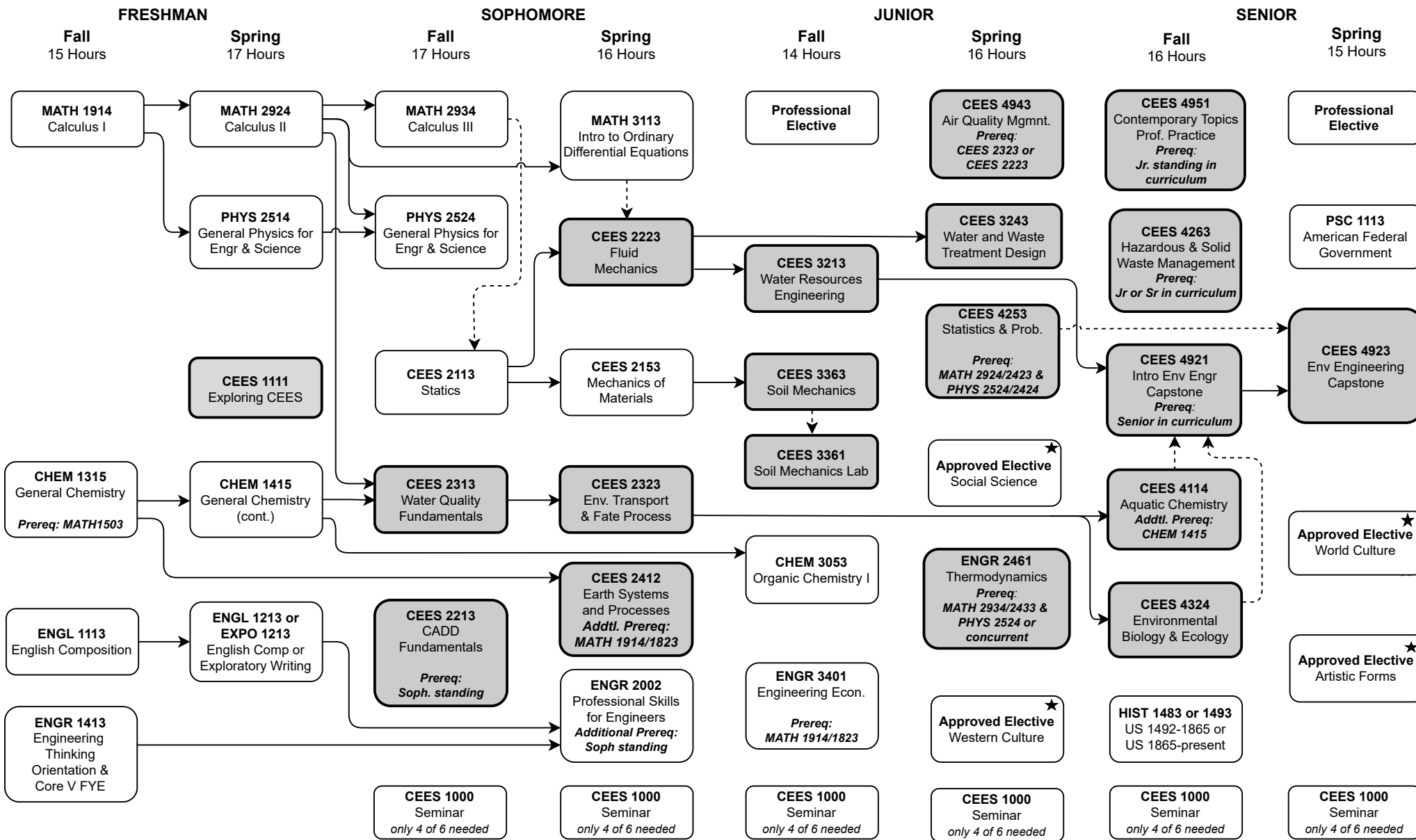
Name: _____

Sooner ID: _____

Bachelor of Science in Environmental Engineering (Standard Option B390)

Summer 2024 through Spring 2025 – Total Credit Hours: 126

This flowchart is not an official check sheet of degree requirements. It is meant to be used as a supplemental visual guide along with the official University of Oklahoma degree check sheet.



- ★ At least one of these Gen. Ed. courses must be 3000-4000 level.
- Foreign Language: 2 semesters college level or 2 years of high school.
- ← - - -> Co-requisite.
- ↔ Prerequisite
- Shaded courses offered once per year.
- HS History Deficiency

Professional Electives and Flowcharts can be found here: <https://www.ou.edu/coe/academics/advising/degree-plans-and-flowcharts>