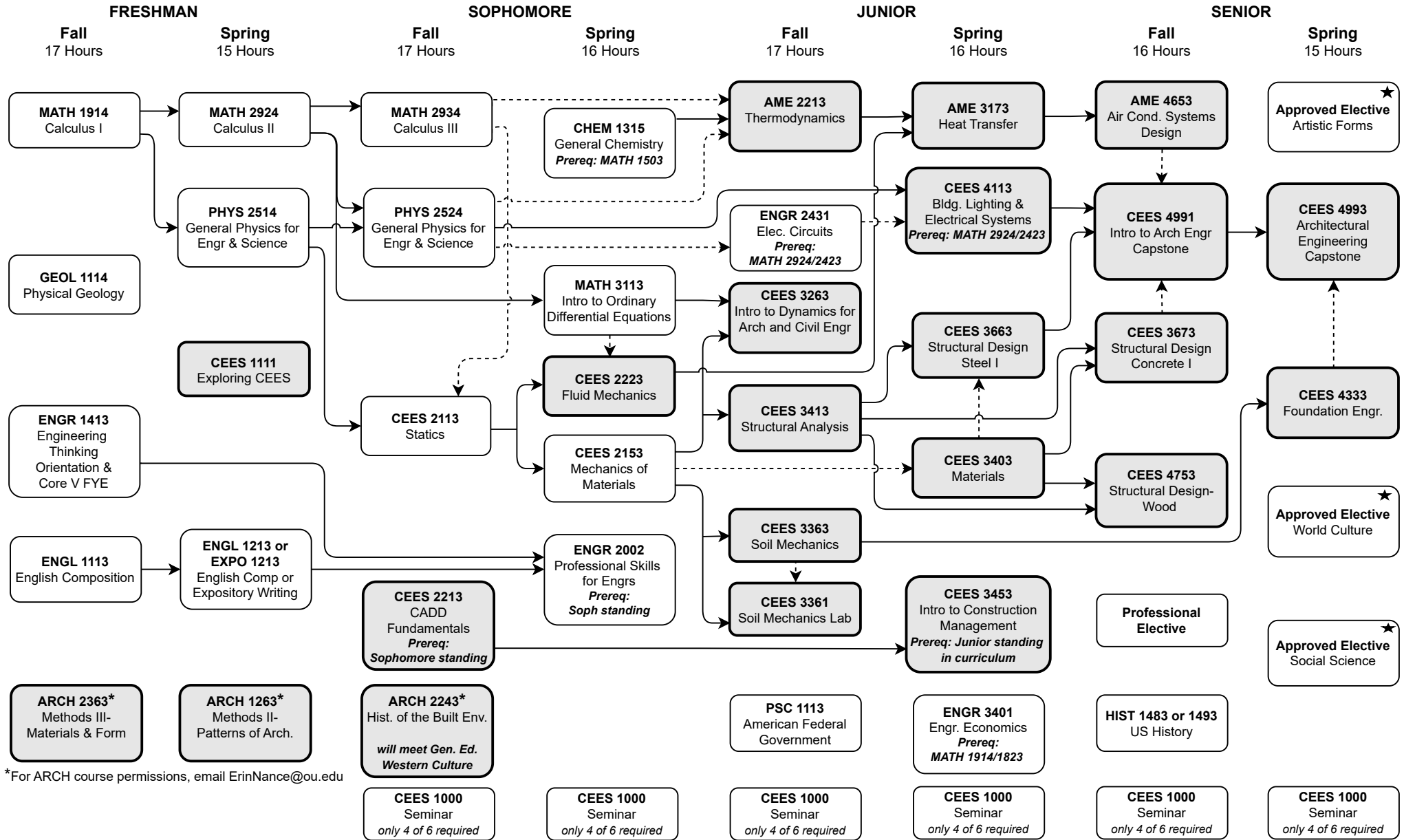


Bachelor of Science in Architectural Engineering (Standard Option B035)

Summer 2024 through Spring 2025 – Total Credit Hours: 129

This flowchart is not an official check sheet of degree requirements. It is meant to be used as a supplemental visual guide along with the official University of Oklahoma degree check sheet.



*For ARCH course permissions, email ErinNance@ou.edu

★ At least one of these Gen. Ed. courses must be 3000-4000 level.
 Foreign Language: 2 semesters college level or 2 years of high school.

←---→ Co-requisite.
 ↔ Prerequisite
 Shaded courses offered once per year.
 HS History Deficiency

Professional Electives and Flowcharts can be found here: <https://www.ou.edu/coe/academics/advising/degree-plans-and-flowcharts>