

# Social Work Research

*A Newsletter by the Anne and Henry Zarrow School of Social Work*



## Welcome Statement

by Chie Noyori-Corbett, Ph.D., M.S.S.W., Associate Director of Research

I am very pleased to have learned that the inaugural issue of our research newsletter was very well received. I hope our newsletters will help students learn the importance of research, both as a practitioner and a researcher, and learn what their professors do professionally when they are not teaching; scholars in different disciplines more fully understand what social work researchers are advancing; and community members can realize what important work social work researchers are doing to vitalize their community.

Especially for those scholars in other disciplines, I would like to emphasize the importance of the involvement of social work researchers in transdisciplinary teams. Social work researchers' knowledge of communities, oppressed populations and social justice issues are extremely indispensable. Most importantly, their strong and trusted relationships in their communities, which in many cases have been built beginning with their time as social work practitioners, are extremely important in conducting community research projects.

In this second issue, not only presentations and grants, but also publications by our faculty members this year will be introduced. Our faculty members' efforts to disseminate their research findings, pedagogical perspectives and conceptual works are well-represented in this issue. I hope you find this newsletter valuable, informative and inspiring.

## *In this Issue*

- Welcome Statement
- Researcher Spotlight: Lisa Byers, Ph.D.
- Publications
- 2023 CSWE Annual Program Meeting
- Presentations, Trainings and Workshops
- Awarded Grants
- Transdisciplinary Research in Action
- About the Authors
- Social Work Word Search

# Researcher Spotlight: Lisa Byers, Ph.D.

Interviewed by Nayma Mendieta, M.S.W. Student and GRA



Lisa Byers' journey in social work started with a deep sense of empathy and a desire to make a meaningful impact in the lives of individuals and communities, especially within indigenous communities. Her goal is to reduce the health, mental health and socioeconomic disparities that Native Americans experience with holistic and traditional methods.

Byers' research focuses on teaching empathy for historical traumas. Her research includes studying student reactions to stories of historical traumas. She uses children's books to teach empathy in her graduate-level courses.

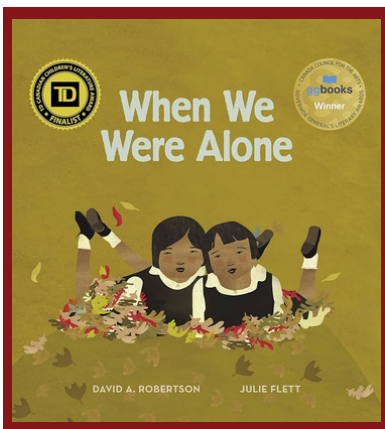
Her work is a shining example of the transformative power of empathy and education. By utilizing children's stories as a medium for teaching empathy, she not only enriches the lives of her students but also contributes to a more harmonious and culturally aware society.

Byers was the creator of a Social Work with American Indian certificate. Her advice to students interested in research related to indigenous populations is to take part in completing the Social Work with American Indians certificate offered at OU. This certificate provides cultural knowledge and skill development to prepare graduates to work effectively with tribal nations to increase the well-being of American Indian and Alaska Native children, families and communities.

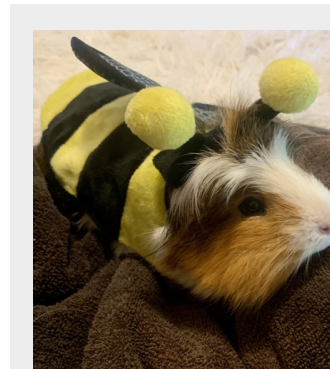
Students have had powerful responses to their participation in obtaining this certificate. Byers hopes to expand on her research by conducting qualitative research such as interviews and surveys on Native students who have gone through the certification to further dissect how material has made such an impact on their graduate school experience. Students have shared that the courses have provided them with a safe space to be able to openly talk about practices from their own communities.



Byers representing Cherokee Nation and accepting the land acknowledgement at the CSWE Annual Program Meeting in Atlanta.



Byers uses *When We Were Alone* to explore themes of cultural preservation, family and resilience, offering a glimpse into the history and strength of Indigenous peoples with her students and in her research.



### Fun Fact

Byers enjoys dressing up her guinea pig, Pumpkin aka Guinea Goos. For Halloween 2022 he was a bumblebee.



## Faculty and Student Publications

The Anne and Henry Zarrow School of Social Work at the University of Oklahoma has a rich tradition of producing impactful research and publications that address critical social issues. Faculty and students within the school have been at the forefront of advancing knowledge in the field of social work, with their work spanning a wide range of topics, from mental health and child welfare to social justice and community development. Through rigorous research, the faculty and students contribute to a deeper understanding of the complex challenges faced by individuals and communities on both global and local scales. Their publications not only inform policy and practice but also inspire positive change, demonstrating the school's unwavering commitment to fostering a more just and equitable society. Recent publications from faculty and students are listed below.

- Adamson, T. L., Jankowski, C. M., McBride, R. (2023). Grassroots Blueprint: How Housing is Constructed in Ecosocial Work." *EcoSocial Work: Environmental Practice and Advocacy*. *NASW Press*, 16.
- Bekteshi, V., & Miller, C. R. (July, 2023). India's government response to Covid-19 and the rise of domestic violence. *Development Policy Review*.
- Cassie, K. M., Miller, C. R., & \*Schupack, D. J. (2023). Incentivizing students to learn more about gerontological practice. *Journal of Gerontological Social Work*, DOI: 10.1080/01634372.2023.2244570
- Aguiniga, D., Madden, E.E., Goodwin, B., & Ryan, S. (2023) Post-adoption contact experiences of birth mothers. *Adoption Quarterly*, 0(0), 1–17. DOI: 10.1080/10926755.2023.2228772
- Hellman, C. M., Pharris, A. B., & Munoz, R. T. (2023). Responding to Adverse Childhood Experiences: The science of hope as a framework for action. *Advances in Social Work*, 22(3), 1066-1083. <https://doi.org/10.18060/25632>
- McLeod, D.A., \*Ozturk, B., Butler-King, R. \*Peek, H. (2023). Male Survivors of Domestic Violence, Challenges in Cultural Response, and Impact on Identity and Help-Seeking Behaviors: A Systematic Review. *Trauma, Violence, & Abuse*, 0(0). <https://doi.org/10.1177/15248380231177318>
- McLeod, D.A., \*Roberts, E. (2023). Toward Modernization: Using Strategic Development to Address Deficits in the Juvenile Justice System. *National Youth Advocacy and Resilience Journal*. 6(1). <https://doi.org/10.20429/nyarj.2023.060102>
- \*Jones, M., Worthen, M., \*\*Sharp, S., McLeod, D.A. (2023). Differences in Adverse Childhood Experiences and Coercive Control Among Native American and Non-Native American Justice Involved Women. *Victims and Offenders*. 18(1), 51-76, DOI:10.1080/15564886.2022.2135653
- \*Ozturk, B., \*Miller, C. R., McLeod, D.A., Dickerson, D. (2023). Who Will They Turn to? The Perspectives of Middle School Girls Regarding Trustworthy Traits in Adults. *Middle Grades Review*, 9(1). <https://scholarworks.uvm.edu/mgreview/vol9/iss1/5>
- Miller-Cribbs, J. E., Miller, C. R., McLeod, D. A., Franklin, L. D., Adamson, T. L., McBride, R., Jankowski, C. M., Dell, J. E. (in press). "Pivoting with the Pandemic: A School of Social Work's Strategic Response to the COVID Crisis." *Rethinking Social Work Education in Light of the COVID-19 Pandemic: Lessons Learned from International Social Work Scholars and Leaders*, Cognella Publishers, 15.
- Gandy, M. E., Levy, D. E., & Natale, A. P. (in press). LGBTQ+ people seeking a faith community home: Implications for social workers and allied helping professionals. *Journal of Gay and Lesbian Social Services*.
- Noyori-Corbett, C., Sharma, Y., \*\*Bhattacharjee, S., \*Harden, M., & \*Ratcliffe, E. (Accepted 2023). Analysis of global governance: A case of Rohingya. *Journal of Human Rights and Social Work*.
- \*\*Bhattacharjee, S., & Noyori-Corbett, C. (2023). Housing condition and preferences of refugee immigrants in Dallas, TX. *Wellbeing, Space and Society*, 4. Retrieved from <https://www.sciencedirect.com/science/article/pii/S2666558123000234?via%3Dihub>
- Noyori-Corbett, C., & Moxley, P. D. (in press). Advancing the human rights content of the social work curriculum. *Journal of Social Work Education*.
- Noyori-Corbett, C., & Moxley, P. D. (2023). The United States Department of State Diplomacy Lab for Supporting MSW Students' Engagement in Community-Based Refugee Resettlement Research. *Journal of Social Work Education*.
- Noyori-Corbett, C., Sharma, Y., & Miller, C. (2023). Steps towards Internationalization in Social Work Education: A case of study abroad course development. *Indian Journal of Social Work*.
- \*\*Kim, Y. & Noyori-Corbett, C. (in press). Ethnic Density as a Key Factor to Narrow Health Disparities: A Case of American Indian and Alaska Native. *Health and Social Work*.
- Pharris, A. B., Munoz, R. T., & Hellman, C. M. (2023). Case Workers as a source of hope leading to perceptions of academic success in transitional age foster youth. *Child and Family Social Work*. <https://doi.org/10.1111/cfs.12996>
- Pharris, A. B., \*Lepper-Pappan, H. M., Maher, E. J., & Natale, A. P. (2023). The caseworker as an external locus of hope for LGB T youth. *Journal of Public Child Welfare*. <https://doi.org/10.1080/15548732.2023.2193121>

(\*) Student works, (\*\*) Transdisciplinary works

# Council on Social Work Education Annual Program

Congratulations to our Zarrow School of Social Work faculty members and students who presented at this year Council on Social Work Education Program in October. The Annual Program Meeting's theme is *It's Time to Act: Defining and Reckoning With Anti-Racist Social Work Education.*"

The conference took place October 26-29th in Atlanta, Georgia.

*An Appraisal of the Institution of Social Work Regulation Session*

Presented by Pharris, A. B., Ph.D. & Pharris S., LCSW

*Anti-racism and Indigenous Standpoint Theory: Creating Safe Decolonized Classrooms.*

Presented by Lisa Byers, Ph.D.

*Assessing black male trauma: a multi-phase approach for the Intergenerational Family Trauma Genogram.*

Presented by Butler-King, R. Ph.D. & Natale, A. Ph.D.

*Promoting an Anti-Racist Society in Community-Engaged and Participatory Research.*

Presented by Grinnell Davis, C., Ph.D., Butler-King, R. Ph.D., Noyori-Corbett, C., Ph.D., Brady, S., Ph.D.

*Social Workers and Policy Practice Ways to Advance Anti-Racism throughout the policymaking process*

Presented by Pharris, A., Ph.D., Natale, A., Ph.D., & Goodwin, B., Ph.D.



*Utilizing Pop Culture to Create Provocative Discussion about Anti-Racist Practices in Field Education.*

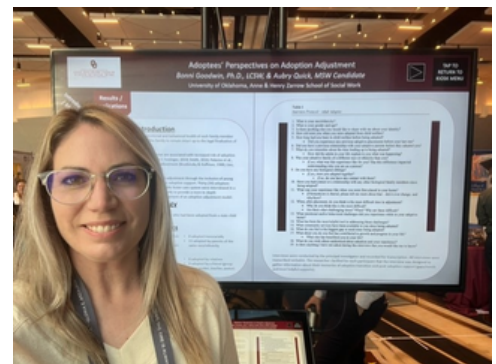
Presented by Clark-Andrejkovics, A., MSW, Burns, C., LCSW, & Brown \*K. (contributor)



*Reducing Burnout and Secondary Trauma Among Developmental Disability Workforce: A Case for Hope.*

Presented by Pharris, A.B., Ph.D., Miller, C.R., Ph.D. & Hellmann, C.M., Ph.D.

*Adoptees' Perspectives on Adoption Adjustment.*  
Presented by Goodwin, B., Ph.D., & Quick, A.



*Let's Tell the Story Differently: Using Digital Assignments in Field Education.*

Presented by Jankowski, C., LCSW, Sanford, P., LCSW, & Durrett, S., LCSW

*Connecting Education to Workforce: Findings from a Statewide Survey of Social Workers.*

Presented by Miller-Cribbs, J. & \*Schupack, D





# Council on Social Work Education Annual Program



*Suffering in Silence: The Call for Social Work Educators to Teach Asian American Oppression.*

Presented by \*Kieu, J., LMSW & Noyori-Corbett, C., Ph.D

*Breaking the Bamboo Ceiling in Social Work Profession and Higher Education.*

Presented by \*Kieu, J., LMSW & Noyori-Corbett, C., Ph.D (contributor).

*White Saviorism, Colonialism, and Becoming Mothers: Impacts of Better Baby Contests in Hawaii.*

Presented by Maxwell, D., Ph.D.

*Understanding the Experiences of Intimate Partner Violence Survivors Who are New Mothers in Shelter.*

Presented by Maxwell, D., Ph.D.



*Practicum students make social justice differences in public schools by advocating for change.*

\*Jackson, B., \*Campos, M., McCoy, A., LCSW, & Cothran, J.



## How to Become a Graduate Research Assistant

If you are interested in becoming a social work GRA, please follow the steps below to find and apply for currently open positions! Also, make sure to keep an eye out for school emails that may announce GRA position openings.

Step 1: Go to [JOBS.OU.EDU](https://jobs.ou.edu)

Step 2: Click on STUDENT JOBS. Then, click on ON CAMPUS STUDENT JOBS.

Step 3: Search for any available Graduate Research Assistant Positions in the Social Work department.

Step 4: Apply online!

## Other Presentations

*Our faculty members' commitment to research and knowledge-sharing continues to elevate our institution's reputation in the field of social work.*

*We applaud their dedication and look forward to more exciting contributions in the future!*

- Kratz, J. K.** (2023). Empathy as intervention: Infusing MI into suicide-specific clinical training. MINT- Forum, Copenhagen, Denmark.
- Munoz, R.T., Hellman, C.M., & Pharris, A.B.** (2023). Collective hope in the workplace: A new construct to better understand how to lower burnout among public service employees. American Psychological Association, Washington, D.C.
- Munoz, R.T., Hellman, C.M. & Pharris, A.B.** (2023). The development and validation of a Collective Hope in the Workplace scale: A new measure for promoting more hopeful work environments. IPPS World Congress on Positive Psychology. Vancouver, Canada.
- Graves, X., Shade, D., Briggs, L., Fransisco, A., **McLeod, D.A.**, (2023). Across the Spectrum on Abolition. 2023 Conference for Association for Justice-Involved Females and Organizations. Tulsa.
- \*Ozturk, B., **McLeod, D.A.**, Bell, A., Gentzler, R. (2023). The Effects of Diversion Programming on Recidivism. Poster Presentation for Society of Social Work and Research annual meeting. Phoenix AZ.
- Natale, A.P.**, & Kupferman, E. (7/18/23). Human Sexuality Education: Desperately seeking social workers. Sexuality and Social Work. Glasgow, Scotland.
- Kupferman, E, & **Natale, A.P.** (7/19/23) The other isms. Sexuality and Social Work. Glasgow, Scotland.
- Noyori-Corbett, C.** & **\*\*Boo-Young Lee** (2023). Community Building with Myanmar Refugee Women: Hope for Children. Oklahoma Partnership for School readiness. The 2023 Research Symposium. Oklahoma
- Pharris, A.B.** (2023). The Science of Hope as a Practice Model for Child, Youth, and Family Wellbeing. Family Focused Treatment Association National Conference. Columbus, OH.
- (\*) Student works, (\*\*) Transdisciplinary works

## Community Education

**Pettigrew, D., LCSW:** Our dedicated educators, including Pettigrew, Hingson, Saltz and Bolt, have been on a mission to empower professionals. Pettigrew led a workshop on “A Prevention Trial in Cherokee Nation” at the Second Annual Nevada Prevention Leadership and Training Summit in Reno, Nevada. The team of Hingson, Saltz and Pettigrew delivered insights on the “Prevention of Underage Drinking” at the Community Anti-Drug Coalitions of America Midyear Training Institutes in Grapevine, Texas. Additionally, Pettigrew and Bolt conducted a series of “Ethics for Child Welfare Practice in Indian Country” training sessions, spanning multiple locations.



**Kratz, J., LCSW:** Kratz plays a significantly important role in communities in Oklahoma by sharing knowledge and skills regarding suicide prevention and motivational interviewing. His presentations include “Suicide Prevention with Refugees” for YWCA staff who work with refugee population from Afghanistan, “Introduction to Motivational Interviewing and SBIRT” for OSU Project GROW, “Motivational Interviewing in Community Health Practice” for the Oklahoma Department of Health, “Motivational Interviewing in Family & Preventative Medicine” for the Oklahoma Academy of Family Physicians 2023 Scientific Assembly, “Motivational Interviewing in Forensic Practice” for the Tulsa County Alternative Court system, “Helping the Suicidal Young Person” for Haruv USA/Daybreak Family Services, “LGBTQIA2S+ & Suicide Prevention” for Fellowship Lutheran Church, “The Influence of Trauma & Adversity on Child Development” for Tulsa Community College and Haruv USA, and “Motivational Interviewing with Youth & Families” for Shawnee Family Services.



## Research Grants Outside of AHZSSW

We are thrilled to spotlight the remarkable achievements of our faculty members who have recently secured research grants. Their outstanding work not only exemplifies the depth of expertise within our department but also underscores our commitment to advancing research in the field of social work. These grants will empower our faculty to continue their contributions to the field. Congratulations to our dedicated scholars for their well-deserved recognition!



**Chie Noyori-Corbett, Ph.D.**

- Temporal Networks of Environmental Refugee Resettlement: Institution for Community and Society Transformation
- Using Digital Storytelling to Support Language and Literacy Development of Afghan Refugee Women. Institution for Community and Society Transformation



**Venera Bekteshi, Ph.D.**

- National Institute of Health, National Cancer Institute. Loan Repayment Award.
- Summer Fellowship Dodge College of Arts and Sciences



**Christina R. Miller, Ph.D.**

- Project Rural Innovation for Mental Health Enhancement: U.S. Department of Education

## AHZSSW Internal Research Grants

### AHZSSW Internal Research Grant

The first purpose of this grant is to enhance social work knowledge, which will benefit our society and communities where oppressed populations are struggling. The second purpose is to allow faculty members to disseminate their research activities within and outside of our school so that the members of the school will have more opportunities to be a part of transdisciplinary research teams. These purposes align with the University of Oklahoma's several aspects of Pillar 5 of the Lead On, University Strategic Plan, primarily within its vision for research and creative activity:

1. Development of transdisciplinary research projects
2. Cultivate community-engaged research to solve critical challenges facing the state, tribal nations, the United States and the world.

### Grant Awardees



*ReImagine Dance: Providing dance instruction to individuals with developmental disabilities.*

**Aaenson-Fletcher, J., MSW, Clark-Andrejkovics, A., LCSW/MSCJ, & Burns, C., LCSW**

### The Knee Center Research Grant

The Knee Institute for Transformative Scholarship offers seed grants for social work faculty. Funding can be used for research participant incentives, summer pay, to help support a course buy-out, specialized research software, publication fees or pay collaborators. All Knee-supported projects are aligned with the core areas of the Knee Institute:

1. Aging and Lifespan Issues Family Safety
2. Healthy Relationships Arts
3. Creative Activity in Social Work Practice and Education

### Grant Awardees



*Informal Means of Healing Postnatal PTSD through Tattoo*

**Maxwell, D., Ph.D.**

*Culturally Appropriate and Non-Stigmatizing Conceptualization of "Mental Health" for Future Educational Intervention among Afghan Refugee Women towards Successful Resettlement*

**Noyori-Corbett, C., Ph.D., Canon, K., LCSW, Kim, Y.M., Ph.D., & Alavi-Robb, R., Ph.D.**



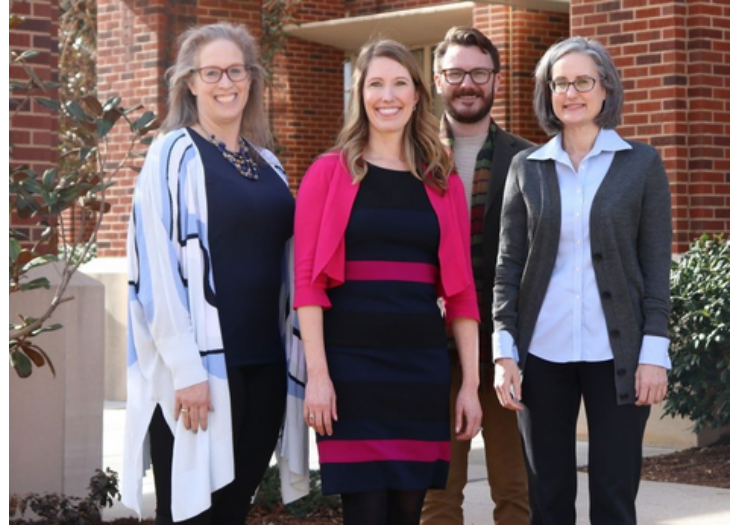
# Transdisciplinary Research in Action:

## Anne and Henry Zarrow School of Social Work & Jeannine Rainbolt College of Education

Christina R. Miller is a Co-PI of a transdisciplinary project titled “Project Rural Innovation for Mental Health Enhancement,” in which the team also collaborate with high-need rural schools in Oklahoma, the Oklahoma Association for Behavior Analysts, the National Association for Social Workers Oklahoma, the American Council on Rural Special Education, Oklahoma Parent Resource Center and a network of more than 30 nonprofit organizations.



Source: OU VPRP  
<https://www.ou.edu/research-normant>



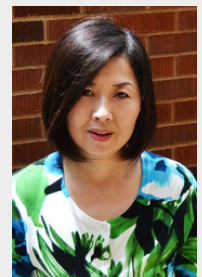
This transdisciplinary team is developing a “Networked Community of Practice” in collaboration with dozens of education-focused organizations to train 64 school-based behavior analysts, counselors and social workers. The project is designed to address state-identified shortages of highly qualified mental health personnel in rural schools to fill gaps in school-based counseling, family support, academic support and connection to community resources.

The team focuses on both their contribution to academia by creating knowledge for future researchers as well as serving the communities at the same time.

### About the Authors

#### Chie Noyori-Corbett, Ph.D., M.S.S.W.

Chie Noyori-Corbett is the associate director of research at the Anne and Henry Zarrow School of Social Work and the founder of the OU Humanitarian Innovation Research Group, which was created to bring awareness to refugee integration issues in the United States. Most of Noyori-Corbett's work is related to people who are displaced globally, including immigrants, refugees and human trafficking victims, and her work has contributed to significant implications for better practices and policies to assist globally displaced populations. In her free time, Noyori-Corbett loves reading and playing with her five cats.



#### Nayma Mendieta, M.S.W. Student

Nayma Mendieta is a third-year M.S.W. student at the Anne and Henry Zarrow School of Social Work. She is currently assisting in research projects that focus on the internationalization of social work as well as research on Afghan refugee mental health. Mendieta is also working with children and families experiencing homelessness at Positive Tomorrows Elementary School. After graduating in May of 2024, Mendieta plans to pursue her LCSW licensure and continue working with children and families. In her free time, Mendieta enjoys reading, photography and traveling to new places.





# Social Work Word Search

by Nayma Mendieta, MSW Student and Graduate Research Assistant

Can you find all 8 social work terms below?

D N I I Y R J I E L M F I E R  
 S U A Q E T K L O R V W S T E  
 L Q C D R F I Z U F K O Q A F  
 V L W U S L D R N Y C P N U E  
 S P J C V L Y T G I J O F L R  
 E C I V R E S K A E I W B A R  
 S N Z M D W J L J T T T V V A  
 H A Y I N I J V N X Y N C E L  
 I V I K O U V E H H V R I X X  
 V O S K S S V E M R P X E J N  
 W D D T P R G E R B H R C C T  
 R T I H E A S S E S S M E N T  
 M C K T S E S I O S I B P Z B  
 E W N R Z K C G R I O T X C S  
 C I G B J K U M A U M C Y V X

- assessment
- diversity
- evaluate
- social justice
- integrity
- intervention
- referral
- service