

# Are Terrestrial Biological Invasions Different in the Tropics?

Kwek Yan Chong,<sup>1</sup> Richard T. Corlett,<sup>2,3</sup>  
 Martin A. Nuñez,<sup>4,5</sup> Jing Hua Chiu,<sup>6</sup>  
 Franck Courchamp,<sup>7</sup> Wayne Dawson,<sup>8</sup> Sara Kuebbing,<sup>9</sup>  
 Andrew M. Liebhold,<sup>10,11</sup> Michael Padmanaba,<sup>12</sup>  
 Lara Souza,<sup>13</sup> Kelly M. Andersen,<sup>6</sup> Songlin Fei,<sup>14</sup>  
 Benjamin P.Y.-H. Lee,<sup>15</sup> Shawn Lum,<sup>6</sup>  
 Matthew S. Luskin,<sup>16</sup> Kang Min Ngo,<sup>6</sup>  
 and David A. Wardle<sup>6</sup>

<sup>1</sup>Department of Biological Sciences, National University of Singapore, Singapore 117558; email: kwek@nus.edu.sg

<sup>2</sup>Center for Integrative Conservation, Xishuangbanna Tropical Botanical Garden, Chinese Academy of Sciences, Menglun, Yunnan 666303, China; email: corlett@xtbg.org.cn

<sup>3</sup>Center of Conservation Biology, Core Botanical Gardens, Chinese Academy of Sciences, Menglun, Yunnan 666303, China

<sup>4</sup>Grupo de Ecología de Invasiones, INIBIOMA, CONICET/ Universidad Nacional del Comahue, Bariloche 8400, Argentina; email: nunezm@gmail.com

<sup>5</sup>Department of Biology and Biochemistry, University of Houston, Houston, Texas 77204, USA

<sup>6</sup>Asian School of the Environment, Nanyang Technological University, Singapore 639798; email: david.wardle@ntu.edu.sg, jinghua001@e.ntu.edu.sg, kelly.andersen@ntu.edu.sg, shawn.lum@ntu.edu.sg, kangmin.ngo@ntu.edu.sg

<sup>7</sup>Université Paris-Saclay, CNRS, AgroParisTech, Ecologie Systématique Evolution, 91405 Orsay, France; email: franck.courchamp@cnrs.fr

<sup>8</sup>Department of Biosciences, Durham University, Durham DH1 3LE, United Kingdom; email: wayne.dawson@durham.ac.uk

<sup>9</sup>Department of Biological Sciences, University of Pittsburgh, Pittsburgh, Pennsylvania 15206, USA; email: sara.kuebbing@pitt.edu

<sup>10</sup>USDA Forest Service Northern Research Station, Morgantown, West Virginia 26505, USA; email: andrew.liebhold@usda.gov

<sup>11</sup>Czech University of Life Sciences, Faculty of Forestry and Wood Sciences, 165 00 Prague 6 - Suchbát, Czech Republic

<sup>12</sup>Yayasan Inobu, West Java 16128, Indonesia; email: mpadmanaba@inobu.org

<sup>13</sup>University of Oklahoma, Oklahoma Biological Survey & Department of Microbiology and Plant Biology, Norman, Oklahoma 73019, USA; email: souzaalara@gmail.com

<sup>14</sup>Department of Forestry and Natural Resources, Purdue University, West Lafayette, Indiana 47907, USA; email: sfei@purdue.edu

**ANNUAL  
REVIEWS CONNECT**

[www.annualreviews.org](http://www.annualreviews.org)

- Download figures
- Navigate cited references
- Keyword search
- Explore related articles
- Share via email or social media

Annu. Rev. Ecol. Evol. Syst. 2021. 52:291–314

First published as a Review in Advance on August 23, 2021

The *Annual Review of Ecology, Evolution, and Systematics* is online at [ecolsys.annualreviews.org](http://ecolsys.annualreviews.org)

<https://doi.org/10.1146/annurev-ecolsys-012021-095454>

Copyright © 2021 by Annual Reviews.  
 All rights reserved

<sup>15</sup>Wildlife Management Division, National Parks Board, Singapore 259569; email: benjamin\_lee@nparks.gov.sg

<sup>16</sup>School of Biological Sciences, University of Queensland, Brisbane, Queensland 4072, Australia; email: mattluskin@gmail.com

## Keywords

latitudinal gradient, biotic invasion, biotic resistance, species characteristics, ecological impacts, biosecurity

## Abstract

Most biological invasion literature—including syntheses and meta-analyses and the resulting theory—is reported from temperate regions, drawing only minimally from the tropics except for some island systems. The lack of attention to invasions in the tropics results from and reinforces the assumption that tropical ecosystems, and especially the continental tropics, are more resistant to invasions. We have critically assessed biological invasions in the tropics and compared them with temperate regions, finding relatively weak evidence that tropical and temperate regions differ in their invasibility and in the traits that determine invader success and impacts. Propagule pressure and the traits that promote adaptation to disturbances (e.g., high fecundity or fast growth rates) are generally favorable to invasions in both tropical and temperate regions. We emphasize the urgent need for greater investment and regional cooperation in the study, prevention, and management of biological invasions in the tropics.

## 1. INTRODUCTION

### 1.1. Invasion Ecology and Tropical Ecology

Invasive species pose a serious threat to biodiversity and ecosystem functioning (Bellard et al. 2016, Murphy & Romanuk 2014), and biological invasions continue unabated around the world as a consequence of increased global connectivity (Seebens et al. 2021). Human activities often result in the transport of large numbers of species, either intentionally (e.g., through agriculture, horticulture, and the pet trade) or unintentionally (e.g., as hitchhikers), well beyond the areas that they can reach through natural dispersal. While only a minority of transported species establish self-replacing populations that spread far beyond their initial sites of establishment, some that do so can become very abundant and cause declines in native populations and species, transform ecosystems, and impact human well-being (Blackburn et al. 2011).

The tropics are at the front line of efforts to halt the decline and extinction of species, the degradation of ecosystems, and the erosion of natural capital (Barlow et al. 2018). The tropics contain a majority of the Earth's biodiversity and play a crucial role in the global carbon cycle (Pan et al. 2011). In addition, they have some of the world's highest levels of human developmental pressures with significant limitations in their financial and institutional capacities to respond to conservation threats (Barlow et al. 2018). Although there have been calls to invest more resources and research into tropical conservation, most attention to date has focused on conservation threats such as habitat loss, land use change, and overexploitation through hunting and logging, while the role of invasive species as environmental and conservation threats has generally received little attention (Barlow et al. 2018, Gardner et al. 2009), except on some tropical oceanic islands (Courchamp et al. 2003, Russell & Holmes 2015).

---

**Invasive species:** naturalized species that spread from the original sites of introduction and cause ecological, economic, or human health impacts

**Oceanic island:** land formed without any land-based connection to continents

---

One reason why tropical invasions have not been prioritized is the perception that many tropical ecosystems, notably continental tropical forests, are particularly resistant to invasion (Rejmánek 1996, Teo et al. 2003). Early evidence in support of this was based on the low numbers of naturalized non-native plants (Lonsdale 1999, Rejmánek 1996), birds, and mammals (Sax 2001) in the continental tropics compared to those in higher latitudes. These perceptions about tropical ecosystem resistance to invasion appear entrenched despite the recognition that the species introduction and disturbance histories of tropical forests differ from those of temperate forests (Denslow & DeWalt 2008, Fine 2002). Notably, the acceleration in rates of species introductions as well as encroachment by human disturbances that facilitate invasions—such as extensive habitat conversion, fragmentation, and degradation—in tropical interiors is relatively recent compared to many temperate areas, especially in the Northern Hemisphere.

An additional or alternative reason for the low reported numbers of naturalized non-native species could simply be low investment in research on invasive species in the tropics. The proportion of papers in English addressing invasions in the tropical biology and environmental research literature has been growing at 2.4% per year on average over the past three decades; however, the proportion of papers from tropical regions in the invasion biology literature has been growing more slowly at 1.4% per year (**Figure 1a**; see **Supplemental Appendix** for methods). This disparity suggests that invasive species are being studied by tropical researchers as a faster-growing proportion of their work relative to the proportion of tropical ecosystems being studied by invasion biology researchers. The paucity of tropical studies available to draw on in literature reviews and meta-analyses on various aspects of invasion biology means that the conclusions of these analyses are heavily dominated by the much larger number of studies carried out in temperate regions (**Figure 2**). Researchers affiliated with institutions in tropical countries do not dominate the authorship of tropical invasion papers (**Figure 1b**) and tropical countries do not produce more tropical invasion research than do nontropical countries (**Figure 1c**). If the lower latitudes are more susceptible to invasions than has been historically assumed, or if they become more susceptible as a consequence of ongoing disturbance, land conversion, and habitat degradation, then the underrepresentation of local tropical institutions in invasion research and consequently the ability to respond to invasive species problems would be a cause for concern (Early et al. 2016, Seebens et al. 2015).

## 1.2. Aims of This Review

In this review, we investigate the similarities of and differences in biological invasions between tropical and temperate regions. Specifically, we critically examine what is known and not known about the invasibility of tropical habitats, the characteristics of known successful tropical invaders, and the impacts of invasions in tropical areas. We then discuss how best to respond to biological invasions in the tropics in the face of the current socioeconomic context and other high-priority conservation challenges in tropical regions.

## 2. INVASIBILITY AND INVADEDNESS OF THE TERRESTRIAL TROPICS

The concept of invasibility relates to the extent to which an ecosystem fails to resist the establishment of non-native species populations (Lonsdale 1999); it is a key concept in invasion biology but is difficult to measure directly. It is also different from the vulnerability of an ecosystem to impacts by invading species, which we discuss in Section 4. Invasibility has mostly been measured by using proxies for the degree (Guo et al. 2015), or level (Catford et al. 2012), of invasion, or hereafter invadedness, such as the richness or abundance of naturalized species. However, the invadedness

---

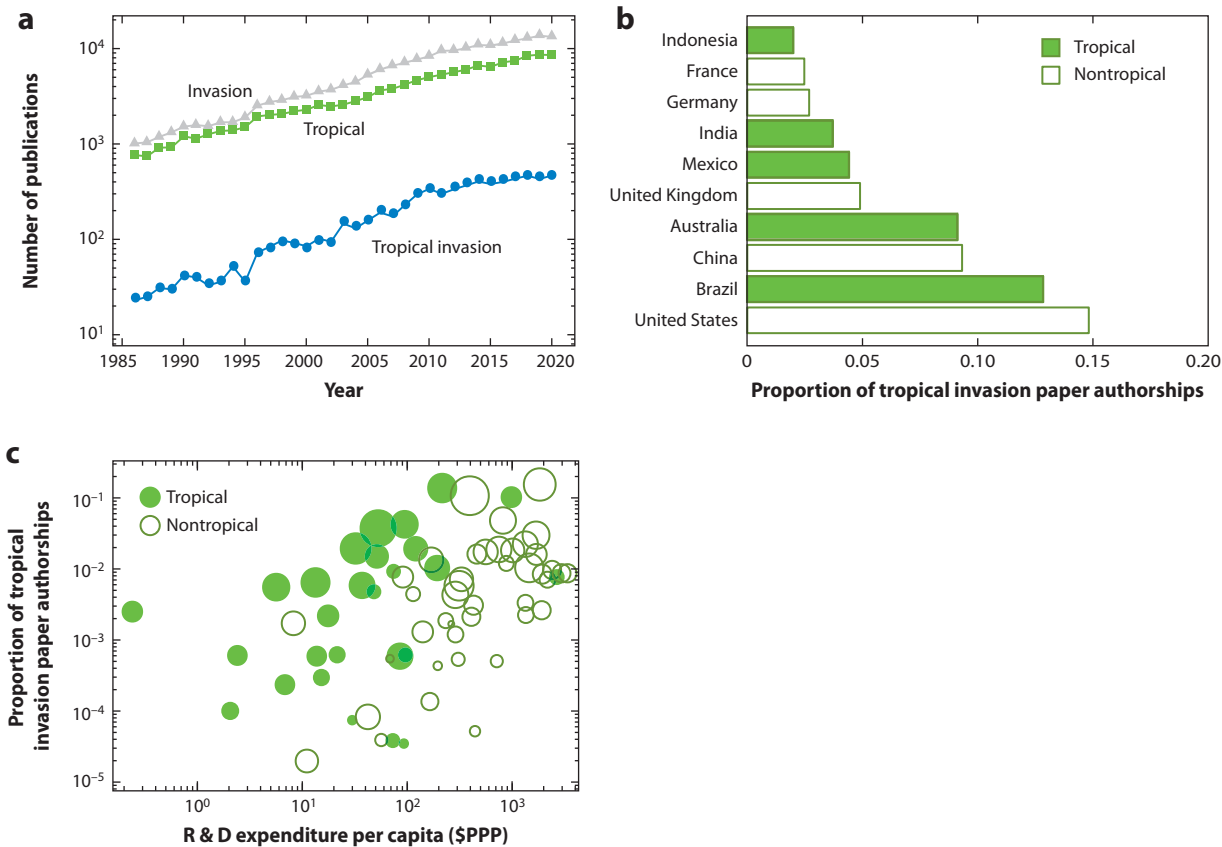
**Continental:** a term describing land that is or was connected to one of the seven continents

**Naturalized species:** a non-native species that has established a self-replacing population

**Non-native species:** a species that is brought outside of its native range by human activities; also called alien, exotic, introduced, or nonindigenous species

---

**Supplemental Material** >



**Figure 1**

(a) Number of papers published in invasion biology (gray triangles), tropical biology (green squares), and tropical invasion biology (blue circles) from 1986 to 2020. Note that the y axis is on a logarithmic scale. (b) The top 10 countries in terms of the mean proportion of affiliations on all tropical invasion biology papers published from 2017 to 2020 (tropical: green bars; nontropical: white bars). (c) The relationship between countries' mean proportion of affiliations on all tropical invasion biology papers published from 2017 to 2020 (y axis) versus the per capita research and development (R & D) expenditure corrected for purchasing power parity (PPP) in 2017 (x axis), population size (diameter of circle is proportional to the log-transformed population), and whether the country is tropical (green) or not (white). Readers are referred to the **Supplemental Appendix** for details.

**Supplemental Material** >

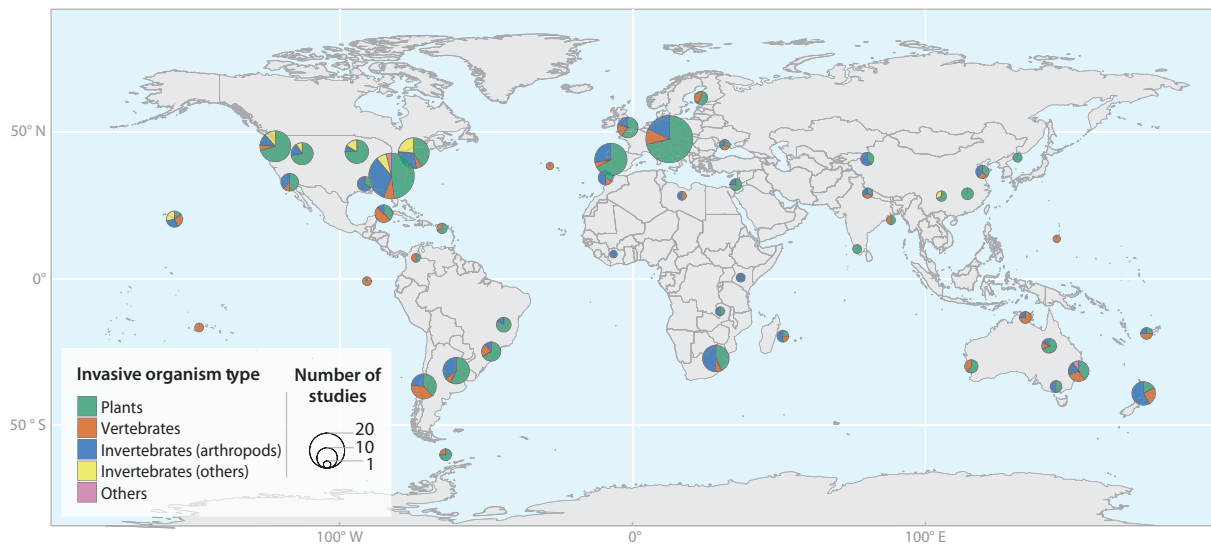
**Propagule pressure:**

the number of individuals introduced per introduction event (propagule size) and the frequency of introduction events (propagule frequency or number)

of an ecosystem is a function of both ecosystem invasibility and relative exposure to non-native species (i.e., propagule pressure over time). The low numbers of naturalized non-native species previously reported from tropical areas (Lonsdale 1999, Rejmánek 1996, Sax 2001) therefore indicate low invadedness at the time of reporting but not necessarily low invasibility. Here we examine whether there is a strong theoretical basis for expecting low invasibility in the tropics, and if recent evidence has emerged to support these ideas.

**2.1. Resource-Based Theories**

So far, most explanations of the purportedly low invasibility of tropical relative to temperate ecosystems draw on resource competition–consumption theories. It has been proposed that light limitation in intact tropical forests should exclude non-native plants from establishing themselves in understories (Fine 2002). If light availability is the primary control on tropical invasibility, then open tropical habitats should be more invasible than closed-canopy tropical forests. There is some



**Figure 2**

Geographical distribution of experimental or observational studies of invasive organisms published in *Biological Invasions* and *Neobiota* from 2019 to 2020. The sizes of the pie charts are proportional to the number of unique studies at that locality, while colors indicate the types of invasive organism studied. Readers are referred to the **Supplemental Appendix** for details.

**Supplemental Material** >

evidence for this pattern, with many records of naturalized plants in open tropical savannas and dry forests (Foxcroft et al. 2010, Kerns et al. 2020) and very few in closed-canopy rain forests (Fine 2002). However, this same light-limitation hypothesis has been refuted even for many light-limited temperate forests, because several shade-tolerant invasive plants have been shown to establish and expand into them (Martin et al. 2009).

Belowground resources may also affect the invasibility of tropical ecosystems. Notably, the availability of certain rock-derived nutrients, especially phosphorus, is on average more limiting in tropical ecosystems than in comparable temperate systems, although there are many exceptions (Du et al. 2020). Non-native tree diversity has been found to increase with increasing soil phosphorus, but not with soil nitrogen, in tropical secondary forests on abandoned land in Singapore (Lai et al. 2021). Similarly, in the Brazilian cerrado, non-native plant abundance has been shown to decrease with increasing (foliar) N:P ratio of the vegetation (Lannes et al. 2012), and phosphorus addition with or without nitrogen addition was found to promote invasion by the African grass *Melinis minutiflora* (Bustamante et al. 2012). These examples suggest that increased phosphorus availability in tropical ecosystems may frequently lead to increased invasion by nutrient-demanding non-native plant species.

Because the diversity of most taxonomic groups is higher on average in the tropics, this has been a tempting starting point for explanations of reduced invasibility. High diversity of the recipient community potentially increases the degree of niche overlap and the likelihood of natural enemy presence; this would, in theory, increase the likelihood of both competitive exclusion and population regulation of the invader by natural enemies (i.e., the biotic resistance hypothesis; Levine & D'Antonio 1999). This mechanism predicts that tropical systems harboring a high diversity should therefore be more resistant to invasion. However, results from tropical studies show both positive and negative diversity-invadedness relationships (Ackerman et al. 2017, Denslow et al. 2009, Kueffer et al. 2010, Lannes et al. 2020), in line with what is seen in temperate regions,

**Savanna:** grassland with occasional woody plants

**Cerrado:** the largest savanna region in South America

---

**Niche saturation:**

the extent to which all available niches have been occupied

**Niche packing:**

a determinant of the number of species present that could potentially occupy a given niche space

**Mycorrhiza:**

a mutualistic plant-fungal symbiosis occurring at the roots of plants

**Arbuscular mycorrhiza:**

a mycorrhiza in which the fungus forms treelike structures within plant root cells

**Ectomycorrhiza:**

a mycorrhiza in which the fungus colonizes intercellular plant root spaces and forms a mantle around the root tip

---

and this variation is attributable to the multitude of factors that determine both native and non-native diversities, including the scale of study and even statistical artifacts (Fridley et al. 2007). The probability that there is a producer, prey, or host that can interact with a non-native consumer or a suitable mutualistic partner increases with diversity, but the probability of encountering this suitable resource or mutualist decreases (Guo et al. 2019).

The degrees of niche saturation and niche packing are a more accurate and direct reflection of biotic resistance than is species diversity or richness (Guo et al. 2015). It is well-established that tropical islands—particularly those that are more isolated—are more invaded than are the continental tropics (Denslow et al. 2009, Kueffer et al. 2010, Moser et al. 2018). The reduced size of the species pool of natural colonizers in island ecosystems may have led to more vacant niches and lower overall natural enemy presence, which would benefit newly arriving invasive species (Denslow 2003, Denslow & DeWalt 2008). It is less clear, however, whether niche space is more saturated in tropical versus temperate continental systems. In addition, if potential niche space is more highly packed in the continental tropics, this would suggest that biotic interactions could be stronger and/or more specialized (MacArthur 1965). If exploitative biotic interactions (e.g., herbivory, predation, parasitism, etc.) are more specialized in the tropics, then a consumer species is less likely to be able to find prey or host resources when introduced in the tropics outside of its native range—although they would also be less likely to encounter natural enemies, having left them behind in their native range (Shea & Chesson 2002). Likewise, if mutualisms involving native species are both more important and more specialized in the tropics, then this could explain the lower establishment success of non-native species. However, evidence for latitudinal gradients in biotic interactions has been mixed, is highly context-dependent, and is the subject of ongoing debate (e.g., Moles & Ollerton 2016, Schemske et al. 2009).

Fungal pathogens and mycorrhizae form particularly strong associations with plants in the continental tropics (Bagchi et al. 2014, Delavaux et al. 2019), and there is evidence of higher endemism of soil fungal communities in tropical than in temperate regions (Tedersoo et al. 2014). This difference could contribute to either the reduced establishment success of non-native plants through lack of mutualists or the increased likelihood of the escape of these plants from natural enemies. Furthermore, on average, woody plants are associated more with arbuscular mycorrhizal (AM) fungi in the tropics, where they help plants to scavenge for phosphorus, than in temperate regions, where they are associated more with ectomycorrhizal (EM) fungi (Soudzilovskaia et al. 2019, Steidinger et al. 2019). However, there are exceptions, such as the tropical forests of Southeast Asia, which are dominated by EM-associated trees of the Dipterocarpaceae. AM fungi are less specialized and their interaction networks are more nested, with a few generalist species that associate with most of the plants in the community (van der Heijden et al. 2015), and AM-dominant forests are known to be generally more invasible than are EM-dominant forests (Jo et al. 2018). This suggests that, all else being equal, tropical forest plant-fungal networks should, on average, be more—rather than less—susceptible to plant invasions than are temperate ones. Finally, the proportion of native mycorrhizal plants is lower on islands than on mainland ecosystems, while the reverse is true for the proportion of naturalized mycorrhizal plants (Delavaux et al. 2019). This difference suggests that non-native plants on tropical islands may have advantages relative to natives at least in part from the cointroduction of mycorrhizal mutualists that the native plants cannot utilize (Delavaux et al. 2019).

## 2.2. Nonequilibrium Versus Equilibrium Mechanisms

Resource competition— or consumption—based explanations of low invasibility assume that the recipient communities are at or near equilibrium. Furthermore, most discussions of the invasibility



of the tropics fail to consider the role of nonequilibrium processes, such as disturbance regimes and dispersal limitation. Rejmánek (1996) suggested that the rapid progression of tropical forest succession after disturbances would restore equilibrium and competitively exclude non-natives. However, Huston (1994) proposed that the rate of competitive displacement in tropical forests is slow relative to the rate of return of disturbances, thereby allowing the maintenance of high species diversity despite limited resource conditions. In the same way, a non-native species should still be able to establish itself whenever environmental conditions are suitable, at least ephemerally. For example, a pulsed increase of both light and nutrients might occur in tropical forest canopy gaps as a result of the decomposition of dead plant material. In such conditions, non-native species that are inferior resource competitors may establish viable populations if they have superior colonization abilities (Shea & Chesson 2002). Tropical storms can disperse seeds or spores and accelerate the growth and recruitment rates of non-native plants (Murphy & Metcalfe 2016), implying that ecosystems that are more frequently disturbed by such events are likely to be more invasible.

Both equilibrium and nonequilibrium mechanisms of invasibility predict that tropical ecosystems will be increasingly invaded as they become more disturbed, either directly by human activities or indirectly from more frequent or intense storm or fire events resulting from anthropogenically induced climate change. Such disturbances may eliminate competitors and expose suitable microsites to the establishment of non-native species. Some tropical ecosystems are pre-adapted to specific disturbances that promote potential invaders, while, conversely, species native to other comparable tropical ecosystems may not be able to adapt when introduced. For example, African savannas have a longer history of association with human disturbances, large herbivores, and fire, which may be the reason for their apparently lower invasibility compared to other tropical savannas (Foxcroft et al. 2010). Other types of ecosystems may be more sensitive to disturbances. For example, in tropical forests, selective logging has often led to increased non-native plant richness and abundance (Brown & Gurevitch 2004, Döbert et al. 2018, Waddell et al. 2020a). Further, logging roads allow the transport of propagules closer to potential sites of invasion (Veldman & Putz 2010, Veldman et al. 2009), and the fragmentation of tropical forests for agriculture exposes forest interiors to higher non-native propagule pressure (Waddell et al. 2020a). Synergies between different disturbances can also occur, such as logging promoting the invasion of grasses which, in turn, increases the fuel load and the frequency and intensity of fires (Veldman et al. 2009). While it is still unclear if intact tropical ecosystems have intrinsically low invasibility, there are now many examples of disturbed tropical ecosystems that have been invaded.

### 3. CHARACTERISTICS OF TROPICAL INVADERS

#### 3.1. Characteristics of Invasive Plants

While the various hypotheses on invasibility of tropical relative to temperate regions are based on habitat differences, we might also expect the traits of invasive species to differ between temperate and tropical ecosystems (Pyšek & Richardson 2006). Many of the most successful invasive plant species in tropical environments are fast-growing, disturbance-adapted pioneer species much like successful invaders in temperate regions. Important insights into the traits of tropical invaders come from tropical grasslands and savannas. For example, in the Neotropics, many C4 grass species that have been introduced from Africa for cattle grazing have characteristics that make them ideal for forage (such as high growth rates) but also operate as successful invaders (Foxcroft et al. 2010). Taylor et al. (2018) surveyed the traits of invasive plants in tropical savannas in Australia and, similar to what has been shown in temperate areas, found that invaders generally occupied the fast end of the leaf-economic spectrum (i.e., high specific leaf area and leaf nutrient

---

**Nonequilibrium:** a state in which the population or biomass of organisms is expected to change directionally given the available resources

**C4:** a photosynthetic pathway in which a four-carbon sugar is the first product of carbon fixation

---

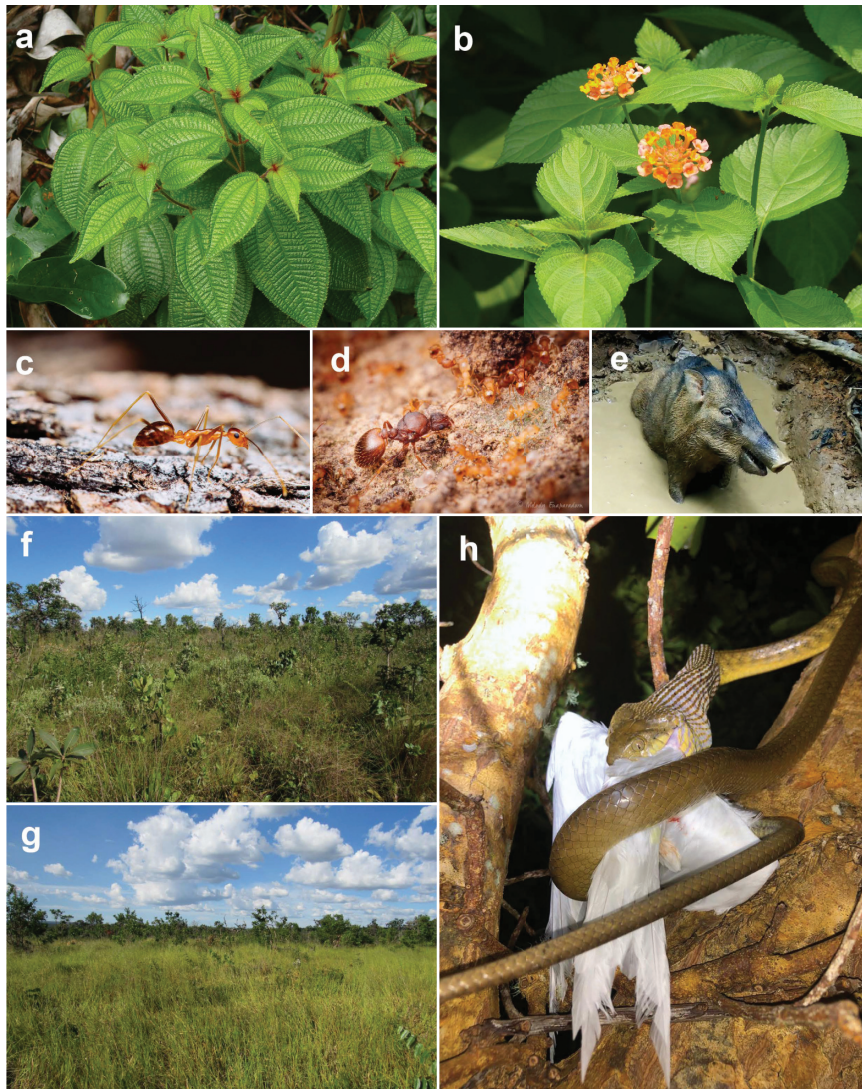
content) relative to the dominant native species. In addition, a meta-analysis of a global traits data set found that the differences in growth rate and physiology between co-occurring invasive and noninvasive species were significantly larger in tropical climates than in temperate climates (van Kleunen et al. 2010). This finding may be attributable to tropical environments selecting for more specific physiological characteristics relative to temperate environments (van Kleunen et al. 2010) or may be reflective of past human choices in what types of species they introduced into tropical versus temperate ecosystems (van Kleunen et al. 2020). Therefore, similar characteristics appear to promote invasions in tropical and temperate areas, but in the tropics these attributes may be more important in separating successful from unsuccessful invaders.

Several plant invasion pathways linked to plant traits have been identified for tropical regions. For example, more tropical naturalized grasses originate from Africa and Asia than from South America (Monnet et al. 2020). This disparity may reflect differences in the characteristics and therefore invasion potentials of Old World versus New World grasses, or it could simply arise from the historical movement of people and plants from the Old to the New World. Furthermore, van Kleunen et al. (2020) found an overrepresentation of non-native plant species that have an economic use in the tropics compared to those in higher latitudes. Among the reported characteristics linked to species having economic value are high growth rates (for plants used for forage, fiber, and biofuels) and resistance to a wide variety of adverse environmental conditions (for plants used to control soil erosion or for restoration). As an example, in forestry, several species of non-native trees have been introduced from the Northern Hemisphere tropics to the Southern Hemisphere tropics because of their high growth rates, low numbers of pathogens, and fiber characteristics; several of these species have become invasive (Nuñez et al. 2017). More generally, differences exist in trade between the different regions of the world that can affect our understanding of invasions (Nuñez & Pauchard 2010), as discussed in Section 5. These differences could potentially confound comparisons of the key characteristics of non-native species among different regions, and differences in invasion rates between tropical and temperate regions could simply be due to differences in propagule pressure irrespective of species traits.

As discussed in Section 2.2, tropical forests are experiencing increasing disturbance, fragmentation, and exposure to non-native propagules. Initially, these increases would favor non-native plant species able to disperse and establish at least into forest edges and, in some cases, into canopy gaps far from their points of introduction (Waddell et al. 2020a,b). Dawson et al. (2009) showed that non-native woody plant species in Tanzania were more likely to infiltrate neighboring forests if they could be dispersed over long distances by wind, birds, or primates. For example, two of the most widespread invaders in the tropics, *Miconia crenata* (formerly *Clidemia hirta*) and *Lantana camara* (**Figure 3a,b**), are dispersed by frugivores (DeWalt & Hamrick 2004, Ramaswami et al. 2016). In line with this fact, Waddell et al. (2020b) showed that the successful invasion of tropical forests requires adaptations for long-distance dispersal (e.g., by vertebrates) as well as traits related to competitive ability, such as being tall and woody. Thus, at least for disturbed tropical forests, evidence points toward the role of plant-dispersal mutualisms as agents for the widespread distribution of non-native plants in forests. In both temperate and tropical forests, shade-tolerant non-native species are found less frequently than are shade-intolerant non-native species, but this difference has been suggested to be partly due to historically low introduction efforts for such species (Martin et al. 2009). Thus, when propagule pressure is sufficient, invaders may include species with atypical shade-tolerance traits that permit their establishment in a low-light forest environment (Dawson et al. 2011, Martin et al. 2009).

Seed bank formation can be also an important characteristic of invasive species in both tropical and temperate areas. Luo et al. (2017) examined forest soil seed banks along an elevational gradient in Yunnan Province, China, and found 15 non-native herbaceous species that accounted





**Figure 3**

Examples of successful tropical invaders. (a) *Miconia crenata* and (b) *Lantana camara* have animal-dispersed fruits. Two invasive tropical ant species are (c) the yellow crazy ant, *Anoplolepis gracilipes*, and (d) the little fire ant, *Wasmannia auropunctata*, here showing a queen and workers. (e) A wild pig, *Sus scrofa*, wallowing in mud. Brazilian savanna, or cerrado, (f) before and (g) after invasion by *Urochloa brizantha*. (h) A brown tree snake, *Boiga irregularis*, eating a bird on the oceanic island of Guam. Photos provided by (a,b) M. Padmanaba, (c,d) M. Euaparadorn, (e) N. Baker, (f,g) G. Damasceno, and (h) N. Sablan.

for 30% of the seeds germinated from the tropical site and four such species at a subtropical site, including *Ageratina adenophora*. While this latter species was present in the seed bank but not in the understory, it would likely proliferate whenever canopy disturbance allows more sunlight to reach the forest floor. Further, Drake (1998) showed that 67% of the seeds in Hawaiian dry forest seed banks were non-native, although native seed plants made up 95% of seed-bearing plants in the living vegetation. However, it is not yet clear if this seed-banking characteristic is more or

less important in the tropics, and there are also many examples in temperate areas where invasive species have large seed banks (e.g., Eschtruth & Battles 2009).

With regard to belowground plant traits, allelopathy and nitrogen fixation have been frequently invoked to explain the success of invasive species common in the tropics. Allelopathy has been shown to be a common trait of some important tropical invaders, such as *L. camara* (Kohli et al. 2006, Singh et al. 2014), though its role in temperate versus tropical invasions remains an open question. Further, and similar to temperate regions, the ability to fix nitrogen symbiotically is a common characteristic of tropical invasive species, particularly on islands where such species can rapidly spread and transform ecosystems (Vitousek & Walker 1989). However, while the Fabaceae—which contains the vast majority of plants that form nitrogen-fixing symbioses—includes many species that are invasive in the tropics, a large number of invasive tropical Fabaceae do not actually form symbioses (Simonsen et al. 2017). Introduction biases of fewer tropical N-fixing plant species than in temperate areas could play a role in this pattern, but environmental conditions in the tropics, such as the lower availability of phosphorus relative to nitrogen (Du et al. 2020), could also be important, particularly for continental ecosystems.

Specific ecosystems require traits that match those ecosystems. For example, some arid and semiarid grasslands of East Africa are especially prone to invasion by trees and shrubs or succulents that are adapted to low rainfall, including mesquite (*Prosopis* spp.), a phreatophyte with a deep rooting system well suited to low water availability (Abd Elbasit et al. 2012), and prickly pear cacti (*Opuntia* spp.), which have a photosynthetic system that reduces loss of water through transpiration while maintaining carbon gain (Witt et al. 2018). As another example, the vast majority of plant species that have invaded mangrove forests (most of which are in the tropics) have traits that confer tolerance to high salinity and anaerobic conditions as well as high fecundity and rapid growth (Biswas et al. 2018).

### 3.2. Characteristics of Invasive Animals

Less information exists on the traits of invasive animals than for those of plants in tropical ecosystems. For ants, probably over 600 species have established populations outside their native distributions (Miravete et al. 2014, Suarez et al. 2009), including several species that have invaded tropical regions. Some of these species, such as the Argentine ant (*Linepithema humile*) and red imported fire ant (*Solenopsis invicta*), that have invaded both tropical and nontropical ecosystems, and others, such as the yellow crazy ant (*Anoplolepis gracilipes*; **Figure 3c**) and the little fire ant (*Wasmannia auropunctata*; **Figure 3d**), have in fact mostly invaded tropical regions (Bertelsmeier et al. 2016). A recent study focusing on the ecological traits of invasive ants found that traits linked to invasiveness included an affinity for disturbed environments, the ability to form supercolonies, having a generalist nesting type, and being able to expand through founding independent colonies (Fournier et al. 2019). However, these traits are important for both temperate and tropical environments, and no traits were identified that would be expected to differ inherently between tropical and temperate environments. Furthermore, invasions of mosquitoes involved in human diseases, such as the Asian tiger mosquito (*Aedes albopictus*), the common malaria mosquito (*Anopheles quadrimaculatus*), and the yellow fever mosquito (*Aedes aegypti*), have been explained mainly by climate matching with their native ranges and not by any specific trait that could explain their spread (Cunze et al. 2018, Lounibos 2002).

Several invasive animal species have traits associated with economic use. For example, the honeybee (*Apis mellifera*) has been introduced to many parts of the world where it has become a successful invader (De Jong 1996). The hybridization of honeybees of European and African origins has conferred traits on the resulting species that promote its success as an invader in the

tropics versus in temperate areas. Harrison et al. (2006) found that a key trait favoring the spread of the Africanized hybrid honeybees in the tropics was their high preference for pollen over nectar, which promoted colony growth at the expense of honey storage for overwintering. For reptiles, good predictors of invasion success in tropical environments include high reproductive rates (such as large and frequent clutches), numbers of introductions (which are often linked to the pet trade), and climate matching with their native range (Bomford et al. 2009, Capinha et al. 2017, Fujisaki et al. 2010). However, if these traits confer differences in invasion between tropical and temperate environments is not yet clear.

Even though mammals are among the most impactful invasive species in both tropical and temperate environments, especially on islands (Courchamp et al. 2003), there is no evidence of differences in specific traits that predict successful invasions between tropical and temperate regions. For birds, studies within three highly invaded regions—Hawaii in the tropics, Florida in the subtropics, and temperate New Zealand—found that non-native species closely related to native species had a consistent advantage in terms of establishment and spread, suggesting that similarities in traits between invasive and local species can be important in both tropical and temperate regions (Maitner et al. 2012). Overall, there are many traits that appear to explain the invasion of animal species in both temperate and tropical areas, but some specific traits related to adaptation to warmer areas may give some non-natives an advantage in the tropics.

## 4. THE IMPACTS OF INVADERS IN TROPICAL ECOSYSTEMS

Non-native species impact a variety of community and ecosystem properties, including abundance and diversity of native species, food web structure, pollinator and frugivore networks, seed dispersal, ecosystem production, decomposition, nutrient cycling, and geomorphology (Andreu & Vilà 2011, Fei et al. 2014, Pyšek et al. 2012). For non-native species to exert important effects, not only must they reach sufficient biomass within their trophic level, but they must also have traits that differ from native species already present and that are ecologically important (Wardle et al. 2011). For plant communities, several syntheses and meta-analyses have provided evidence that trait differences between non-native and native species suffice on average for non-native species to promote plant productivity, soil microbial activity, litter decomposition, nutrient fluxes, and biogeomorphic processes (Fei et al. 2014, Liao et al. 2008, Vilà et al. 2011), although the effects are sometimes weak and are strongly determined by environmental context (Ricciardi et al. 2021). Meanwhile, for invasive animals, despite many examples of their strong impacts in a variety of ecosystems, there have been few serious attempts to develop general predictive principles about their effects (Wardle et al. 2011), except perhaps for their involvement in networks (e.g., Fricke & Svenning 2020). Syntheses, analyses, and reviews aimed at developing principles about the ecological impacts of non-native species have been largely or exclusively dominated by temperate studies, with the exception of some tropical island studies, notably from Hawaii. Because invader effects are driven by environmental context (Ricciardi et al. 2021), and this context differs greatly between tropical and temperate regions, it is unclear if our understanding of invasive species impacts from temperate systems can be meaningfully applied to the tropics (Bellard & Jeschke 2016).

### 4.1. Impacts in the Continental Tropics

For the lowland continental tropics, several examples point to large impacts of non-native plant species in open-canopy systems, although not in closed-canopy primary forest. Just as in temperate systems, several examples exist of highly successful invasive woody species developing monospecific stands that displace native vegetation in tropical heath and secondary rain forest

(e.g., Southeast Asia; Peh 2010) and savanna and woodland (e.g., East Africa; Witt et al. 2018), with several of them involving *Acacia* species capable of nitrogen fixation (Peh 2010, Witt et al. 2018). Furthermore, parts of the hyperdiverse cerrado ecosystem of Brazil are being transformed by invasive grasses (**Figure 3f,g**) (Damasceno et al. 2018) and the formation of monospecific stands of the non-native *Pinus elliottii* (Brewer et al. 2018). There are also a handful of studies of the impacts of invasive animals in both open- and closed-canopy tropical ecosystems. Some examples include the alteration of detrital and herbivore food webs by invasion of the little fire ant (*W. auropunctata*) in rain forest in West Africa (Dunham & Mikheyev 2010); damage to tree seedlings, plant litter, and earthworms by invasive wild pigs (*Sus scrofa*; **Figure 3e**) in rain forest in tropical Queensland (Mitchell et al. 2007); and changes to native bird communities, seed dispersal, and pollination caused by invasive bird species in forest in southeast Asia (Corlett et al. 2020).

Studies are currently insufficient to determine quantitatively if invasive species have effects in the lowland continental tropics that differ from those in corresponding temperate systems, but factors that differ overall between the two systems provide scope for differences in impacts to occur (Bellard & Jeschke 2016). For example, warmer conditions in the tropics might be more conducive to rapid growth that could disproportionately favor non-native plant species and thereby exacerbate their impacts (van Kleunen et al. 2010). Further, the greater domination of tropical forests by AM-associated species may make them more invasible, as discussed in Section 2.1, which would in turn lead to greater impacts of non-native species. Conversely, the lower availability of rock-derived nutrients (notably phosphorus) on average in the tropics (Du et al. 2020) could make some regions less conducive to domination by faster-growing and nutrient-demanding invasive plant species and thus minimize their impacts. Further, as mentioned in Section 3.1, non-native legumes in the tropics are less likely to associate with rhizobial symbionts on average than are legumes in temperate regions, which in turn reduces their capacity to transform ecosystems through nitrogen inputs (Simonsen et al. 2017). Finally, at least for closed-canopy tropical rain forests, the low levels of light transmission through the canopy could exclude invasive plants and therefore reduce their impacts more in tropical than in temperate forests (Fine 2002). We emphasize that these factors apply largely to plants; developing predictions of how impacts of invasive animals may respond to differences between temperate and tropical environments poses greater challenges.

## 4.2. Impacts on Tropical Oceanic Islands

The relative simplicity of oceanic island communities leads not only to greater invasibility but also to greater impacts, as compared with the mainland (Pyšek et al. 2012, Simberloff 1995). There are numerous examples of invasive plants transforming tropical oceanic island ecosystems, with a disproportionate number from the Hawaiian archipelago. Several examples involve invasive nitrogen-fixing plants, including classic studies (e.g., Vitousek & Walker 1989) pointing to the transformation of several community and ecosystem properties following the invasion of intact forest by the shrub *Morella faya*. Others point to the domination of the forest understory by invasive grasses that alter biogeochemical processes and prevent tree seedling regeneration (Litton et al. 2006). Frequently, multiple invasive species are involved following grass invasion, with initial invaders facilitating the establishment of secondary invaders at the expense of the native plant community (D'Antonio et al. 2017).

There are also several examples of far-reaching effects of the invasion of tropical oceanic islands by animal species. Many islands throughout the tropics and elsewhere are invaded by predatory and omnivorous vertebrates (e.g., cats, rats, dogs, mongooses, or wild pigs) that impact native prey species, and therefore the ecosystem functions that prey species carry out. For example, invasion of the Chagos Islands by rats has eliminated populations of seabirds that transport nutrients from



the ocean to land, impairing nutrient fluxes and halting nutrient runoff to nearby coral communities (Graham et al. 2018). Furthermore, in Guam, the invasive brown tree snake *Boiga irregularis* (Figure 3b) has greatly impaired tree seedling reproduction and recruitment indirectly by eliminating frugivores and disrupting fruit-frugivore mutualisms (Rogers et al. 2017). The invasive bulbul *Pycnonotus jocosus* in Mauritius has contributed to the decline of native bird and spider species and the spread of non-native plant species (Linnebjerg et al. 2010). Invasive invertebrates can also have far-ranging impacts. For example, invasive snails have caused losses of many endemic snail species throughout the Pacific through both competition and predation (Davis-Berg 2012). Further, the yellow crazy ant (*A. gracilipes*) on Christmas Island devours and halts activity by red land crabs that are the major agent of litter fragmentation and selective tree seedling recruitment (O'Dowd et al. 2003). However, while many examples exist of the considerable effects of invasive species on tropical islands, we are not yet in a position to determine if differences in environmental factors between tropical and temperate islands (e.g., climate) cause the effects of invasive species to be somehow stronger on tropical islands.

### 4.3. Tropical Versus Temperate Impacts

Some of the biggest differences in invader impacts between tropical and other regions are likely to involve major functional groups of biota that are concentrated in the tropics. There are two prominent examples. First, C4 grasses, which are confined to warmer regions of the globe, are fast growing and rapidly produce large quantities of flammable aboveground material. Therefore, in many drier tropical regions in Brazil, northern Australia, and Hawaii, the invasion of C4 grasses into woody vegetation promotes fire load, leading to a grass-fire cycle and possible eventual and irreversible conversion into grasslands (D'Antonio et al. 2011, Silvério et al. 2013) that have fundamental differences in their nutrient cycling (Mack et al. 2001). Second, mangrove ecosystems, which are mainly dominant in tropical coastal environments, have a key role in land stabilization, carbon sequestration, and habitat provision for other biota. The invasion of mudflats by mangrove species on remote islands that lack native mangroves thus leads to large increases in the coastal storage of so-called blue carbon (Davidson et al. 2018). Furthermore, there are several examples throughout the tropics of the invasion of native mangrove ecosystems by other salt-tolerant plant species, causing changes in coastal hydrology through sediment trapping, conversion to marshes, alteration of soil fertility and water tables, impairment of mangrove seedling regeneration, and loss of habitat for associated animal communities (Biswas et al. 2018).

The relative dearth of studies that have explored the impacts of invasive species in the tropics, particularly in continental regions, creates challenges in providing meaningful insights about the extent to which invasions are contributing to the anthropogenic transformation of tropical landscapes. There is a clear need for both manipulative (e.g., invader removal) experiments (D'Antonio et al. 2017) and natural experiments (e.g., Graham et al. 2018) for assessing how invasive species impact tropical ecosystems independently of covarying and confounding factors. Considerable scope also exists for distributed experiments to assess invader impacts simultaneously in temperate and tropical regions as well as for focusing on the impacts of invader groups that are widely distributed in both regions, such as rats, wild pigs, and plant genera such as *Acacia* and *Pinus*. Further, we have almost no information from the tropics on impacts for many important groups of organisms or types of ecosystems. Most studies in the tropics have focused on invasive plants, vertebrates, and ants, and we have minimal knowledge of the impacts of invasive soil invertebrates or microbes, despite their role in driving decomposition, biogeochemical fluxes, nutrient supply, and, ultimately, primary productivity. We also have little knowledge about invader impacts on high-elevation ecosystems on tropical mountains that are often colonized by non-native

---

**Invasion debt:**  
additional invasion  
that is expected to  
occur in the future  
given the current  
conditions

---

temperate grasses and forbs. Finally, biota are being transformed not only by gains of non-native species but also by losses of native species; in tropical systems, as elsewhere, an open question remains as to how landscapes are being affected by the losses of some species and their replacement by new species that could potentially play fundamentally different ecological roles (Wardle et al. 2011).

## 5. RESPONDING OR ADAPTING TO BIOLOGICAL INVASIONS IN THE TROPICS

Until recently, differences in environmental management between the tropical and temperate parts of the world largely coincided with variation in economic development, but this correlation has been considerably weakened in the last 20 years by rapid development in many tropical countries. Although most World Bank (2021) low-income countries are still in the tropics, most tropical countries are now in the middle-income categories, and there are several small high-income countries, as well as Hawaii, several French overseas territories, and the tropical region of Australia. National gross domestic product values tend to be closely related to factors influencing the strength of invasion pathways, such as maritime shipping traffic and international travel (Sardain et al. 2019), and with the scientific, technical, and financial capacities for response. However, time lags (>50 years in some cases; Essl et al. 2011) between first introduction and establishment in the wild mean that large invasion debts may be present in tropical countries that have been transformed economically over this period.

### 5.1. Tropical Trade

Global shipping traffic grew fourfold between 1992 and 2012 and is projected to increase by between 240% and 1209% by 2050, depending on country, with much of this growth in current middle-income countries (Sardain et al. 2019). A priori, tropical invasions are most likely to result from direct tropical–tropical connections, but no such major shipping routes link geographically distant tropical regions, and there are few direct flights. China’s ambitious Belt & Road Initiative is, however, an additional risk factor for tropical invasions, as much of the associated trade will flow through tropical and subtropical ports in China (Liu et al. 2019). Also, some tropical airports now handle huge numbers of incoming tourists from all over the world, and passenger luggage is a source of invasive arthropods (Liebhold et al. 2006) and other organisms. Additional risk comes from the poorly documented domestic trade within large tropical countries, such as Indonesia, that incorporate more than one biogeographic region.

Most invasive species are introduced through a small subset of global trade activities (pets, forestry, horticulture, etc.) that are not necessarily correlated with total trade. Pet lovers and gardeners often seek out rare exotic pets and plants even though they are known risk agents (Lockwood et al. 2019). Rising incomes in tropical countries have led to the explosive growth of such practices, and this growth has elevated the rates of introduction of invasive plants, plant pests, and non-native vertebrates (Corlett et al. 2020, Liu et al. 2020). In Indonesia, the vast internal pet trade has moved many vertebrate species across the Wallace Line, some of which have then become invasive (Corlett et al. 2020), and there are similar problems in Brazil (Alves et al. 2019). Plantation forestry is also expanding rapidly throughout the tropics. Non-native species are preferentially planted, and the risks of these becoming invasive are rarely considered, despite the massive propagule pressure plantations can exert (Padmanaba & Corlett 2014).

The promotion of trade and tourism is a common priority for almost all countries and could potentially outweigh actions to prevent, monitor, and manage invasive non-native species. The

striking contrast between the layers of passenger-delaying biosecurity that greet international arrivals in Australia and the much lower level of such restrictions on arrival in Hawaii illustrates the different approaches to the trade-offs between screening and welcoming tourists. Moreover, there is evidence that biosecurity measures can disproportionately burden developing countries (Murina & Nicita 2017). Country Reports to the Convention on Biological Diversity (CBD) on progress in achieving Aichi Target 9 [and Global Strategy for Plant Conservation (GSPC) Target 10] provide more or less standardized information on country plans and priorities (BGCI 2020, CBD 2019). Previous analyses of Fourth and Fifth National Reports (Early et al. 2016, Latombe et al. 2017) suggest that additional capacity to prevent, monitor, and manage invasive species would benefit many tropical countries. However, the Sixth National Report (CBD 2019) shows greater recent progress in many tropical countries, including major biodiversity hotspots (e.g., Brazil, Indonesia, Kenya, and Thailand). This change demonstrates that an increasing level of awareness of the issue by national governments can facilitate progress toward implementing the targets. There are also programs, such as Implementation & Capacity Development of the International Plant Protection Convention (IPPC 2020) and the CABI Sanitary and Phytosanitary Capacity Development Program (Day 2013), that facilitate cooperation by economically developed countries to promote phytosanitary capacity-building in developing countries.

---

**Biosecurity:** measures that prevent the introduction and spread of harmful organisms

---

## 5.2. Responding to the Threat of Invasions

Global research and development funding and expenditure is overwhelmingly concentrated in temperate regions (**Figure 1c**). Among tropical countries, only India and Brazil are in the global top 10 in terms of domestic expenditure on research and development (R&D), and only Brazil, Malaysia, Singapore, and Thailand spend at least 1% of GDP on R&D, as do part-tropical China and Australia. An unknown but undoubtedly small proportion of this expenditure is allocated toward research on invasive species. The USA, France, the United Kingdom, Japan, China, Germany, and several additional countries in Europe conduct long-term ecological research with collaborators in the tropics, partly in their overseas territories for the first three. Limited research funding is reflected in tropical underrepresentation in the international invasive species literature, with the majority of publications in peer-reviewed journals led by research groups from Australia, China, the USA, Europe, Mexico, Brazil, and India (**Figure 1b**). This underrepresentation does not necessarily reflect a low priority for such research in the tropics, however. Searches of local journals and national publication databases across the tropics suggest that projects on invasive species are frequently given to undergraduate and graduate students or are carried out by local university researchers and protected-area staff. The results of some of this work are available in local journals and government publications but often not in English (e.g., in Indonesian, Thai, Spanish, and Brazilian Portuguese). Most publications are descriptive, and many are species lists or new invasive records, although some also report control efforts (e.g., Sitepu 2020).

The use of cost-benefit analyses to prioritize management efforts is rarely reported in the tropics (Povak et al. 2017), although inadequate funding is often mentioned as a constraint on active management in both tropical and nontropical countries. Prevention makes economic sense everywhere, and the monitoring of non-native species is not expensive where the taxonomic capacity exists (Latombe et al. 2017), as it does in many tropical countries. However, effective management or control measures can be costly. Attempts to control invasive plants in tropical countries have largely been through cutting, manual weeding, fire, or herbicide application (Assis et al. 2020, Padmanaba et al. 2017), drawing on the low labor costs in many developing countries (Nuñez & Pauchard 2010). Despite some spectacular successes with classical biological control of crop pests in tropical countries (Wyckhuys et al. 2020), the systematic application of this control method in



the tropics to invasive species in nonagricultural systems is still mostly confined to Australia (Aust. Dept. Agric. Water Environ. 2020) and Hawaii (Pejchar et al. 2020). There have also been important successes with the eradication of mammals (Russell & Holmes 2015) and insect pests (Vreysen et al. 2000) from tropical islands, but these have largely been carried out by, or in collaboration with, nontropical governments and nongovernmental organizations. Attempts at local eradication of invasive ants in the tropics—often unsuccessful—have also been done largely in tropical Australia and Hawaii, with a few on other tropical islands (Hoffmann et al. 2016). Funding also appears to limit the widespread use of costly fencing to exclude vertebrate invasions (Pejchar et al. 2020).

One striking but poorly documented tropical–temperate difference is in the adaptation to and use of invasive species. Tebboth et al. (2020) focus on the invasive shrub *Prosopis juliflora* in Ethiopia, but their finding that perceptions of this species range from menace to resource could also be applied to many other invasive plants and animals in the rural tropics, where a utilitarian attitude to the flora and fauna, native or not, overrides other considerations. Furthermore, the neotropical shrub *Chromolaena odorata* is widely used in both West Africa and tropical Asia, often for medicinal purposes (Aigbedion–Atalor 2020, Phumthum et al. 2018). This is not just an issue in developing countries: The attitudes of indigenous people to invasive vertebrates in northern Australia do not align with the native/non-native dichotomy (Robinson et al. 2005), and this deviation is also true of local people—particularly recreational hunters—in the Hawaiian Islands and elsewhere in the Pacific (Lohr et al. 2014). Few invaders will likely ever be eradicated after establishment, except on islands, and control efforts are rarely effective in preventing all adverse impacts, so adaptation is as important for invasive species management as it is for climate change (Howard 2019).

Regional coordination and cooperation on invasive species research and action may be necessary to curb invasions in the tropics. The proximity and connectedness of regional neighbors argues for sharing information and experiences as well as a common regional policy on prevention (Soliman et al. 2016). However, although regional cooperation on other environmental issues is common in Southeast Asia, East Africa, and the Neotropics, the National Reports to the CBD (CBD 2019) suggest that each tropical country tackles invasive species largely in isolation, relying on global resources, such as the Global Invasive Species Database (ISSG 2015), rather than on neighbors' collective experience.

## 6. CONCLUSIONS: GOING FORWARD

There are far fewer documented examples of biological invasions in tropical than in temperate regions, which could be due either to less research on tropical invasions or to tropical systems being less invaded. In this review, we have highlighted many recent studies and examples of invasions recorded from the tropics; most of this research has been on plants, with fewer (and largely iconic) examples for animals that are concentrated on oceanic islands, and almost nothing on microorganisms. For plants, differences in invasions between tropical and temperate regions might be due in part to light as a limiting resource, at least in the rain forest, but the lower availability of soil phosphorus on average in the tropics (although with several exceptions) may also serve as a partial explanation, at least for continental land masses. The interactions of invasive plants with other biota could also play a role, for example, through differences in mycorrhizal associations and the importance of dispersal mutualisms in tropical versus temperate ecosystems. For animals, there are currently too few studies to allow us to develop clear principles about whether and how their invasions differ between tropical and temperate systems, and this is an area in definite need of further work.

Apart from the limited patterns mentioned throughout Section 2, there is little compelling or consistent evidence for large differences between tropical and temperate ecosystems in terms of their inherent invasibility. Some differences between tropical and temperate invaders have been documented in the types of traits that lead to their success and the way that they impact invaded ecosystems, but the importance or consistency of these differences is far from clear. Comparisons of invasions in tropical versus temperate regions require the careful separation of purely ecological mechanisms from those relating to introduction effort and history. Any barriers to invasions in tropical natural areas can often be overcome with increasing disturbance and availability of propagules, and these two factors are tightly linked. Invaders of tropical savannas appear to be mostly grasses from Africa, while some of the most important tropical ant invaders are from the floodplains of South America. Both patterns suggest that pre-adaptations to disturbance regimes in native ranges may assist their invasions into human-disturbed areas elsewhere. The impacts of tropical invasions may be limited in large part by barriers to establishment; once disturbances and propagule pressure are sufficient to overcome these barriers, the spread and impact of invasive species correspondingly increase. Thus, invasions in tropical ecosystems may at least initially be the passengers of change from disturbances, as is often the case in temperate systems. However, positive feedback loops between invasions and disturbances may eventually result in the displacement of natives and dominance by non-native species; this outcome is already apparent where disturbed tropical ecosystems are invaded by C4 grass species that promote a fire cycle.

Greater recent international mobility and the growing scale of regional trade agreements, infrastructure projects, and investments have already put tremendous pressure on tropical ecosystems in terms of land-use change and overexploitation. For this reason, we expect that pressures from biological invasions are already underway. While trade protectionism and the impact of the current coronavirus disease pandemic may have caused a slowdown or a pause in the movement of people and goods, or even increased investment in biosecurity, any such impediment is only temporary. As current development in tropical countries tracks that of temperate economies, the state of the environment may converge toward the same eventual outcome: ecosystems that are increasingly fragmented, degraded, and composed of non-native species. There is still a window of opportunity to avoid this future in the tropics.

## SUMMARY POINTS

1. The vast majority of the international biological invasion literature is from temperate regions, with minimal contributions from the tropics, except from some island systems.
2. There are now many examples of the establishment and spread of non-native plant and animal species in the tropics, mostly in disturbed areas. Some cases of ecological impacts have also been demonstrated in the tropics.
3. Nonetheless, well-studied tropical cases of successful invaders and their impacts are still too few and too concentrated on oceanic islands to allow many general conclusions, especially for animals.
4. There is some relatively weak evidence that tropical and temperate regions differ ecologically in terms of invasibility, or that tropical and temperate invaders differ in the biological traits that determine their success or their impacts.
5. Successful establishment in tropical natural areas correlates with increasing disturbance—in line with expectations from both equilibrium and nonequilibrium

theories of invasibility—as well as with increasing propagule pressure, just as it does in temperate regions.

6. The rising numbers of documented invasions and impacts in the tropics are a harbinger of the calling in of invasion debt in tropical countries from recent economic development as well as trade and income growth.
7. There is increasing awareness of the threat of biological invasions in tropical countries, but there is a general underinvestment in scientific and management capacities, as well as in regional coordination, to document and respond to this growing threat.

## FUTURE ISSUES

1. Recent syntheses, reviews, and meta-analyses that underpin current theory for invasion biology draw mainly from literature from temperate regions, except for a few oceanic island systems such as Hawaii, and there is a need to better understand the extent to which this theory also applies to the tropics.
2. The mechanisms by which plant invasibility differs between tropical and temperate regions need further investigation. These include the roles of resource limitation (e.g., light and soil phosphorus) and of biotic interactions, including those with soil biota and root symbionts.
3. More studies of the impacts of invading species, especially animals, in the continental tropics are required. These need to go beyond description and observations to experiments (both manipulative and opportunistic), potentially including distributed experiments to test hypotheses and quantify impacts on a pantropical or global scale.
4. There is a need to understand and predict how ongoing environmental changes resulting from human activity, such as land use, pollution, and climate change, will influence future invasions of the tropics and their impacts.
5. Cost-effectiveness and cost-benefit analyses are needed to inform the prioritization of biosecurity measures and other prevention or control strategies to mitigate the potentially growing impact of biological invasions in tropical countries, while at the same time not overburdening them with financial and economic trade-offs.

## DISCLOSURE STATEMENT

The authors are not aware of any affiliations, memberships, funding, or financial holdings that might be perceived as affecting the objectivity of this review.

## ACKNOWLEDGMENTS

This manuscript emerged from a workshop on Biological Invasions in the Tropics through the partnership between Nanyang Technological University (NTU) and the Smithsonian Institution, which was organized by D.A.W., K.Y.C., M.A.N., and K.M.N., and funded and hosted by NTU. We thank Chua Siew Chin, Adrian Loo, Alex Yee, and Shimona Quazi for participating in the workshop. A.M.L. was supported by grant EVA4.0, No. CZ.02.1.01/0.0/0.0/16\_019/0000803

financed by Operational Programme Research, Development and Education. F.C. is supported by the AXA Research Fund Chair of Invasion Biology of the University Paris Saclay and the AlienScenario project of BiodivERsA and Belmont-Forum Call 2018.

## LITERATURE CITED

- Abd Elbasit MAM, Yasuda H, Yoda K, Eldoma AM, Nawata H, et al. 2012. Mesquite (*Prosopis spp.*) water uptake under different simulated drought conditions. *J. Arid Land Stud.* 22(1):5–8
- Ackerman JD, Tremblay RL, Rojas-Sandoval J, Hernández-Figueroa E. 2017. Biotic resistance in the tropics: patterns of seed plant invasions within an island. *Biol. Invasions* 19(1):315–28
- Aigbedion-Atalor PO. 2020. Weed or not a weed? Density, perceptions and management of *Chromolaena odorata* (Asteraceae) in West Africa: voices from Ghana. *Weed Res.* 60(6):406–14
- Alves RRN, de Araújo BMC, da Silva Policarpo I, Pereira HM, Borges AKM, et al. 2019. Keeping reptiles as pets in Brazil: ethnozoological and conservation aspects. *J. Nat. Conserv.* 49:9–21
- Andreu J, Vilà M. 2011. Native plant community response to alien plant invasion and removal. *Manag. Biol. Invasions* 2:81–94
- Assis GB, Pilon NAL, Siqueira MF, Durigan G. 2020. Effectiveness and costs of invasive species control using different techniques to restore cerrado grasslands. *Restor. Ecol.* 29(S1):e13219
- Aust. Dept. Agric. Water Environ. 2020. Protocol for biological control agents: Revised guidelines for the introduction of exotic biological control agents for the control of weeds and plant pests. *Australian Government: Department of Agriculture, Water and the Environment*. [https://www.agriculture.gov.au/biosecurity/risk-analysis/biological-control-agents/protocol\\_for\\_biological\\_control\\_agents](https://www.agriculture.gov.au/biosecurity/risk-analysis/biological-control-agents/protocol_for_biological_control_agents)
- Bagchi R, Gallery RE, Gripenberg S, Gurr SJ, Narayan L, et al. 2014. Pathogens and insect herbivores drive rainforest plant diversity and composition. *Nature* 506:85–88
- Barlow J, Gardner TA, Hicks CC, Lennox GD, Berenguer E, et al. 2018. The future of hyperdiverse tropical ecosystems. *Nature* 559:517–26
- Bellard C, Cassey P, Blackburn TM. 2016. Alien species as a driver of recent extinctions. *Biol. Lett.* 12:20150623
- Bellard C, Jeschke JM. 2016. A spatial mismatch between invader impacts and research publications. *Conserv. Biol.* 30(1):230–32
- Bertelsmeier C, Blight O, Courchamp F. 2016. Invasions of ants (Hymenoptera: Formicidae) in light of global climate change. *Myrmecological News* 22:25–42
- BGCI (Bot. Gard. Conserv. Int.). 2020. National plant conservation strategies – Examples and case studies. *Plants 2020: Supporting the Implementation of the Global Strategy for Plant Conservation*. <https://www.plants2020.net/national-casestudies/>
- Biswas SR, Biswas PL, Limon SH, Yan E-R, Xu M-S, Khan MSI. 2018. Plant invasion in mangrove forests worldwide. *For. Ecol. Manag.* 429:480–92
- Blackburn TM, Pyšek P, Bacher S, Carlton JT, Duncan RP, et al. 2011. A proposed unified framework for biological invasions. *Trends Ecol. Evol.* 26(7):333–39
- Bomford M, Kraus F, Barry SC, Lawrence E. 2009. Predicting establishment success for alien reptiles and amphibians: a role for climate matching. *Biol. Invasions* 11(3):713–24
- Brewer JS, Souza FM, Callaway RM, Durigan G. 2018. Impact of invasive slash pine (*Pinus elliottii*) on ground-cover vegetation at home and abroad. *Biol. Invasions* 20(10):2807–20
- Brown KA, Gurevitch J. 2004. Long-term impacts of logging on forest diversity in Madagascar. *PNAS* 101(16):6045–49
- Bustamante MMC, de Brito DQ, Kozovits AR, Luedemann G, de Mello TRB, et al. 2012. Effects of nutrient additions on plant biomass and diversity of the herbaceous-subshrub layer of a Brazilian savanna (Cerrado). *Plant Ecol.* 213(5):795–808
- Capinha C, Seebens H, Cassey P, García-Díaz P, Lenzner B, et al. 2017. Diversity, biogeography and the global flows of alien amphibians and reptiles. *Divers. Distrib.* 23(11):1313–22
- Catford JA, Vesk PA, Richardson DM, Pyšek P. 2012. Quantifying levels of biological invasion: towards the objective classification of invaded and invisable ecosystems. *Glob. Change Biol.* 18:44–62
- CBD (Conv. Biol. Divers.). 2019. Sixth National Report information portal. *Convention on Biological Diversity, United Nations Environment Programme*. [www.cbd.int/nr6/](http://www.cbd.int/nr6/)

- Corlett RT, Leven MR, Yong DL, Eaton JA, Round PD. 2020. Continental analysis of invasive birds: Asia. In *Invasive Birds: Global Trends and Impacts*, ed. CT Downs, LA Hart, pp. 314–39. Wallingford, UK: CAB Int.
- Courchamp F, Chapuis JL, Pascal M. 2003. Mammal invaders on islands: impact, control and control impact. *Biol. Rev. Camb. Philos. Soc.* 78(3):347–83
- Cunze S, Kochmann J, Koch LK, Klimpel S. 2018. Niche conservatism of *Aedes albopictus* and *Aedes aegypti* – two mosquito species with different invasion histories. *Sci. Rep.* 8:7733
- D’Antonio CM, Hughes RF, Tunison JT. 2011. Long-term impacts of invasive grasses and subsequent fire in seasonally dry Hawaiian woodlands. *Ecol. Appl.* 21(5):1617–28
- D’Antonio CM, Ostertag R, Cordell S, Yelenik S. 2017. Interactions among invasive plants: lessons from Hawai’i. *Annu. Rev. Ecol. Evol. Syst.* 48:521–41
- Damasceno G, Souza L, Pivello VR, Gorgone-Barbosa E, Giroldo PZ, Fidelis A. 2018. Impact of invasive grasses on Cerrado under natural regeneration. *Biol. Invasions* 20(12):3621–29
- Davidson IC, Cott GM, Devaney JL, Simkanin C. 2018. Differential effects of biological invasions on coastal blue carbon: a global review and meta-analysis. *Glob. Change Biol.* 24(11):5218–30
- Davis-Berg EC. 2012. The predatory snail *Euglandina rosea* successfully follows mucous trails of both native and non-native prey snails. *Invertebr. Biol.* 131(1):1–10
- Dawson W, Burslem DFRP, Hulme PE. 2009. Factors explaining alien plant invasion success in a tropical ecosystem differ at each stage of invasion. *J. Ecol.* 97(4):657–65
- Dawson W, Burslem DFRP, Hulme PE. 2011. The comparative importance of species traits and introduction characteristics in tropical plant invasions. *Divers. Distrib.* 17(6):1111–21
- Day RK. 2013. *More trade, safer trade: strengthening developing countries’ sanitary and phytosanitary (SPS) capacity*. Work. Pap. 4, CABI, Egham, UK
- De Jong D. 1996. Africanized honey bees in Brazil, forty years of adaptation and success. *Bee World* 77(2):67–70
- Delavaux CS, Weigelt P, Dawson W, Duchicela J, Essl F, et al. 2019. Mycorrhizal fungi influence global plant biogeography. *Nat. Ecol. Evol.* 3(3):424–29
- Denslow JS. 2003. Weeds in paradise: thoughts on the invasibility of tropical islands. *Ann. Missouri Bot. Gard.* 90(1):119–27
- Denslow JS, DeWalt SJ. 2008. Exotic plant invasions in tropical forests: patterns and hypotheses. In *Tropical Forest Community Ecology*, ed. WP Carson, SA Schnitzer, pp. 409–26. Hoboken, NJ: Wiley-Blackwell
- Denslow JS, Space JC, Thomas PA. 2009. Invasive exotic plants in the tropical Pacific islands: patterns of diversity. *Biotropica* 41(2):162–70
- DeWalt SJ, Hamrick JL. 2004. Genetic variation of introduced Hawaiian and native Costa Rican populations of an invasive tropical shrub, *Clidemia birta* (Melastomataceae). *Am. J. Bot.* 91(8):1155–62
- Döbert TF, Webber BL, Sugau JB, Dickinson KJM, Didham RK. 2018. Logging, exotic plant invasions, and native plant reassembly in a lowland tropical rain forest. *Biotropica* 50(2):254–65
- Drake DR. 1998. Relationships among the seed rain, seed bank and vegetation of a Hawaiian forest. *J. Veg. Sci.* 9(1):103–12
- Du E, Terrer C, Pellegrini AFA, Ahlström A, van Lissa CJ, et al. 2020. Global patterns of terrestrial nitrogen and phosphorus limitation. *Nat. Geosci.* 13(3):221–26
- Dunham AE, Mikheyev AS. 2010. Influence of an invasive ant on grazing and detrital communities and nutrient fluxes in a tropical forest. *Divers. Distrib.* 16(1):33–42
- Early R, Bradley BA, Dukes JS, Lawler JJ, Olden JD, et al. 2016. Global threats from invasive alien species in the twenty-first century and national response capacities. *Nat. Commun.* 7:12485
- Eschtruth AK, Battles JJ. 2009. Assessing the relative importance of disturbance, herbivory, diversity, and propagule pressure in exotic plant invasion. *Ecol. Monogr.* 79(2):265–80
- Essl F, Dullinger S, Rabitsch W, Hulme PE, Hülber K, et al. 2011. Socioeconomic legacy yields an invasion debt. *PNAS* 108(1):203–7
- Fei S, Phillips J, Shouse M. 2014. Biogeomorphic impacts of invasive species. *Annu. Rev. Ecol. Evol. Syst.* 45:69–87
- Fine PVA. 2002. The invasibility of tropical forests by exotic plants. *J. Trop. Ecol.* 18:687–705
- Fournier A, Penone C, Pennino MG, Courchamp F. 2019. Predicting future invaders and future invasions. *PNAS* 116(16):7905–10

- Foxcroft LC, Richardson DM, Rejmánek M, Pyšek P. 2010. Alien plant invasions in tropical and sub-tropical savannas: patterns, processes and prospects. *Biol. Invasions* 12(12):3913–33
- Fricke EC, Svenning JC. 2020. Accelerating homogenization of the global plant-frugivore meta-network. *Nature* 585:74–78
- Fridley JD, Stachowicz JJ, Naeem S, Sax DF, Seabloom EW, et al. 2007. The invasion paradox: reconciling pattern and process in species invasions. *Ecology* 88(1):3–17
- Fujisaki I, Hart KM, Mazzotti FJ, Rice KG, Snow S, Rochford M. 2010. Risk assessment of potential invasiveness of exotic reptiles imported to South Florida. *Biol. Invasions* 12(8):2585–96
- Gardner TA, Barlow J, Chazdon R, Ewers RM, Harvey CA, et al. 2009. Prospects for tropical forest biodiversity in a human-modified world. *Ecol. Lett.* 12(6):561–82
- Graham NAJ, Wilson SK, Carr P, Hoey AS, Jennings S, MacNeil MA. 2018. Seabirds enhance coral reef productivity and functioning in the absence of invasive rats. *Nature* 559(7713):250–53
- Guo Q, Fei S, Dukes JS, Oswalt CM, Iannone BV III, Potter KM. 2015. A unified approach for quantifying invasibility and degree of invasion. *Ecology* 96(10):2613–21
- Guo Q, Fei S, Potter KM, Liebhold AM, Wen J. 2019. Tree diversity regulates forest pest invasion. *PNAS* 116(15):7382–86
- Harrison JF, Fewell JH, Anderson KE, Loper GM. 2006. Environmental physiology of the invasion of the Americas by Africanized honeybees. *Integr. Comp. Biol.* 46(6):1110–22
- Hoffmann BD, Luque GM, Bellard C, Holmes ND, Donlan CJ. 2016. Improving invasive ant eradication as a conservation tool: a review. *Biol. Conserv.* 198:37–49
- Howard PL. 2019. Human adaptation to invasive species: a conceptual framework based on a case study meta-synthesis. *Ambio* 48(12):1401–30
- Huston MA. 1994. *Biological Diversity: The Coexistence of Species on Changing Landscapes*. Cambridge, UK: Cambridge Univ. Press
- IPPC (Int. Plant Prot. Conv.). 2020. Implementation & capacity development. *Food and Agriculture Organization of the United Nations*. [www.ippc.int/en/core-activities/capacity-development/](http://www.ippc.int/en/core-activities/capacity-development/)
- ISSG (Invasive Species Spec. Group). 2015. The global invasive species database, version 2015.1. *Species Survival Commission of the International Union for Conservation of Nature*. <http://www.iucngisd.org/gisd/>
- Jo I, Potter KM, Domke GM, Fei S. 2018. Dominant forest tree mycorrhizal type mediates understory plant invasions. *Ecol. Lett.* 21(2):217–24
- Kerns BK, Tortorelli C, Day MA, Nietupski T, Barros AMG, et al. 2020. Invasive grasses: a new perfect storm for forested ecosystems? *For. Ecol. Manag.* 463:117985
- Kohli RK, Batish DR, Singh HP, Dogra KS. 2006. Status, invasiveness and environmental threats of three tropical American invasive weeds (*Parthenium hysterophorus* L., *Ageratum conyzoides* L., *Lantana camara* L.) in India. *Biol. Invasions* 8(7):1501–10
- Kueffer C, Daehler CC, Torres-Santana CW, Lavergne C, Meyer JY, et al. 2010. A global comparison of plant invasions on oceanic islands. *Perspect. Plant Ecol. Evol. Syst.* 12(2):145–61
- Lai HR, Tan GSY, Neo L, Kee CY, Yee ATK, et al. 2021. Decoupled responses of native and exotic tree diversities to distance from old-growth forest and soil phosphorous in novel secondary forests. *Appl. Veg. Sci.* 24:e12548
- Lannes LS, Bustamante MMC, Edwards PJ, Olde Venterink H. 2012. Alien and endangered plants in the Brazilian Cerrado exhibit contrasting relationships with vegetation biomass and N : P stoichiometry. *New Phytol.* 196(3):816–23
- Lannes LS, Karrer S, Teodoro DAA, Bustamante MMC, Edwards PJ, Olde Venterink H. 2020. Species richness both impedes and promotes alien plant invasions in the Brazilian Cerrado. *Sci. Rep.* 10:11365
- Latombe G, Pyšek P, Jeschke JM, Blackburn TM, Bacher S, et al. 2017. A vision for global monitoring of biological invasions. *Biol. Conserv.* 213:295–308
- Levine JM, D'Antonio CM. 1999. Elton revisited: a review of evidence linking diversity and invasibility. *Oikos* 87(1):15–26
- Liao C, Peng R, Luo Y, Zhou X, Wu X, et al. 2008. Altered ecosystem carbon and nitrogen cycles by plant invasion: a meta-analysis. *New Phytol.* 177(3):706–14
- Liebhold AM, Work TT, McCullough DG, Cavey JF. 2006. Airline baggage as a pathway for alien insect species invading the United States. *Am. Entomol.* 52(1):48–54

- Linnebjerg JF, Hansen DM, Bunbury N, Olesen JM. 2010. Diet composition of the invasive red-whiskered bulbul *Pycnonotus jocosus* in Mauritius. *J. Trop. Ecol.* 26(3):347–50
- Litton CM, Sandquist DR, Cordell S. 2006. Effects of non-native grass invasion on aboveground carbon pools and tree population structure in a tropical dry forest of Hawaii. *For. Ecol. Manag.* 231:105–13
- Liu X, Blackburn TM, Liu X, Blackburn TM, Song T, et al. 2019. Risks of biological invasion on the Belt and Road. *Curr. Biol.* 29:499–505
- Liu X, Blackburn TM, Song T, Wang X, Huang C, Li Y. 2020. Animal invaders threaten protected areas worldwide. *Nat. Commun.* 11:2892
- Lockwood JL, Welbourne DJ, Romagosa CM, Cassey P, Mandrak NE, et al. 2019. When pets become pests: the role of the exotic pet trade in producing invasive vertebrate animals. *Front. Ecol. Environ.* 17(6):323–30
- Lohr CA, Lepczyk CA, Johnson ED. 2014. The islands are different: human perceptions of game species in Hawaii. *Environ. Manag.* 54(4):814–27
- Lonsdale W. 1999. Global patterns of plant invasions and the concept of invasibility. *Ecology* 80(5):1522–36
- Lounibos LP. 2002. Invasions by insect vectors of human disease. *Annu. Rev. Entomol.* 47:233–66
- Luo X, Cao M, Zhang M, Song X, Li J, et al. 2017. Soil seed banks along elevational gradients in tropical, subtropical and subalpine forests in Yunnan Province, southwest China. *Plant Divers.* 39(5):273–86
- MacArthur RH. 1965. Patterns of species diversity. *Biol. Rev.* 40:510–33
- Mack MC, D’Antonio CM, Ley RE. 2001. Alteration of ecosystem nitrogen dynamics by exotic plants: a case study of C4 grasses in Hawaii. *Ecol. Appl.* 11(5):1323–35
- Maitner BS, Rudgers JA, Dunham AE, Whitney KD. 2012. Patterns of bird invasion are consistent with environmental filtering. *Ecography* 35(7):614–23
- Martin PH, Canham CD, Marks PL. 2009. Why forests appear resistant to exotic plant invasions: intentional introductions, stand dynamics, and the role of shade tolerance. *Front. Ecol. Environ.* 7(3):142–49
- Miravete V, Roura-Pascual N, Dunn RR, Gómez C. 2014. How many and which ant species are being accidentally moved around the world? *Biol. Lett.* 10:20140518
- Mitchell J, Dorney W, Mayer R, McIlroy J. 2007. Spatial and temporal patterns of feral pig diggings in rainforests of north Queensland. *Wildl. Res.* 34(8):597–602
- Moles AT, Ollerton J. 2016. Is the notion that species interactions are stronger and more specialized in the tropics a zombie idea? *Biotropica* 48(2):141–45
- Monnet AC, Vorontsova MS, Govaerts RHA, Svenning JC, Sandel B. 2020. Historical legacies and ecological determinants of grass naturalizations worldwide. *Ecography* 43(9):1373–85
- Moser D, Lenzner B, Weigelt P, Dawson W, Kreft H, et al. 2018. Remoteness promotes biological invasions on islands worldwide. *PNAS* 115(37):9270–75
- Murina M, Nicita A. 2017. Trading with conditions: the effect of sanitary and phytosanitary measures on the agricultural exports from low-income countries. *World Econ.* 40(1):168–81
- Murphy GEP, Romanuk TN. 2014. A meta-analysis of declines in local species richness from human disturbances. *Ecol. Evol.* 4(1):91–103
- Murphy HT, Metcalfe DJ. 2016. The perfect storm: weed invasion and intense storms in tropical forests. *Aust. Ecol.* 41(8):864–74
- Núñez MA, Chiuffo MC, Torres A, Paul T, Dimarco RD, et al. 2017. Ecology and management of invasive Pinaceae around the world: progress and challenges. *Biol. Invasions* 19(11):3099–120
- Núñez MA, Pauchard A. 2010. Biological invasions in developing and developed countries: Does one model fit all? *Biol. Invasions* 12(4):707–14
- O’Dowd DJ, Green PT, Lake PS. 2003. Invasional “meltdown” on an oceanic island. *Ecol. Lett.* 6(9):812–17
- Padmanaba M, Corlett RT. 2014. Minimizing risks of invasive alien plant species in tropical production forest management. *Forests* 5(8):1982–98
- Padmanaba M, Tomlinson KW, Hughes AC, Corlett RT. 2017. Alien plant invasions of protected areas in Java, Indonesia. *Sci. Rep.* 7:9334
- Pan Y, Birdsey RA, Fang J, Houghton R, Kauppi PE, et al. 2011. A large and persistent carbon sink in the world’s forests. *Science* 333(6045):988–93
- Peh KS. 2010. Invasive species in Southeast Asia: the knowledge so far. *Biodivers. Conserv.* 19:1083–99
- Pejchar L, Lepczyk CA, Fantle-Lepczyk JE, Hess SC, Johnson MT, et al. 2020. Hawaii as a microcosm: advancing the science and practice of managing introduced and invasive species. *Bioscience* 70(2):184–93



- Phumthum M, Srithi K, Inta A, Junsongduang A, Tangjitman K, et al. 2018. Ethnomedicinal plant diversity in Thailand. *J. Ethnopharmacol.* 214:90–98
- Povak NA, Hessburg PF, Giardina CP, Reynolds KM, Heider C, et al. 2017. A watershed decision support tool for managing invasive species on Hawai'i Island, USA. *For. Ecol. Manag.* 400:300–20
- Pyšek P, Jarošík V, Hulme PE, Pergl J, Hejda M, et al. 2012. A global assessment of invasive plant impacts on resident species, communities and ecosystems: the interaction of impact measures, invading species' traits and environment. *Glob. Change Biol.* 18(5):1725–37
- Pyšek P, Richardson DM. 2006. The biogeography of naturalization in alien plants. *J. Biogeogr.* 33:2040–50
- Ramaswami G, Kaushik M, Prasad S, Sukumar R, Westcott D. 2016. Dispersal by generalist frugivores affects management of an invasive plant. *Biotropica* 48(5):638–44
- Rejmánek M. 1996. Species richness and resistance to invasions. In *Biodiversity and Ecosystem Processes in Tropical Forests*, ed. G Orians, R Dirzo, JH Cushman, pp. 153–72. Berlin/Heidelberg: Springer-Verlag
- Ricciardi A, Iacarella JC, Aldridge DC, Blackburn TM, James T, et al. 2021. Four priority areas to advance invasion science in the face of rapid environmental change. *Environ. Rev.* <https://doi.org/10.1139/er-2020-0088>
- Robinson CJ, Smyth D, Whitehead PJ. 2005. Bush tucker, bush pets, and bush threats: cooperative management of feral animals in Australia's Kakadu National Park. *Conserv. Biol.* 19(5):1385–91
- Rogers HS, Buhle ER, HilleRisLambers J, Fricke EC, Miller RH, Tewksbury JJ. 2017. Effects of an invasive predator cascade to plants via mutualism disruption. *Nat. Commun.* 8:14557
- Russell JC, Holmes ND. 2015. Tropical island conservation: rat eradication for species recovery. *Biol. Conserv.* 185:1–7
- Sardain A, Sardain E, Leung B. 2019. Global forecasts of shipping traffic and biological invasions to 2050. *Nat. Sustain.* 2(4):274–82
- Sax DF. 2001. Latitudinal gradients and geographic ranges of exotic species: implications for biogeography. *J. Biogeogr.* 28:139–50
- Schemske DW, Mittelbach GG, Cornell HV, Sobel JM, Roy K. 2009. Is there a latitudinal gradient in the importance of biotic interactions? *Annu. Rev. Ecol. Syst.* 40:245–69
- Seebens H, Bacher S, Blackburn TM, Capinha C, Dawson W, et al. 2021. Projecting the continental accumulation of alien species through to 2050. *Glob. Change Biol.* 21(7):970–82
- Seebens H, Essl F, Dawson W, Fuentes N, Moser D, et al. 2015. Global trade will accelerate plant invasions in emerging economies under climate change. *Glob. Change Biol.* 21(11):4128–40
- Shea K, Chesson P. 2002. Community ecology theory as a framework for biological invasions. *Trends Ecol. Evol.* 17(4):170–76
- Silvério DV, Brando PM, Balch JK, Putz FE, Nepstad DC, et al. 2013. Testing the Amazon savannization hypothesis: fire effects on invasion of a neotropical forest by native cerrado and exotic pasture grasses. *Philos. Trans. R. Soc. B* 368(1619):12–14
- Simberloff D. 1995. Why do introduced species appear to devastate islands more than mainland areas? *Pacific Sci.* 49(1):87–97
- Simonsen AK, Dinnage R, Barrett LG, Prober SM, Thrall PH. 2017. Symbiosis limits establishment of legumes outside their native range at a global scale. *Nat. Commun.* 8:14790
- Singh HP, Batish DR, Dogra KS, Kaur S, Kohli RK, Negi A. 2014. Negative effect of litter of invasive weed *Lantana camara* on structure and composition of vegetation in the lower Siwalik Hills, northern India. *Environ. Monit. Assess.* 186(6):3379–89
- Sitepu BS. 2020. Diversity and management of invasive plants in Samboja Research Forest, Kalimantan Timur. *J. Sylva Lestari* 8(3):351–65
- Soliman T, Macleod A, Mumford JD, Nghiem TPL, Tan HTW, et al. 2016. A regional decision support scheme for pest risk analysis in Southeast Asia. *Risk Anal.* 36(5):904–13
- Soudzilovskaia NA, van Bodegom PM, Terrer C, van't Zelfde M, McCallum I, et al. 2019. Global mycorrhizal plant distribution linked to terrestrial carbon stocks. *Nat. Commun.* 10:5077
- Steidinger BS, Crowther TW, Liang J, Van Nuland ME, Werner GDA, et al. 2019. Climatic controls of decomposition drive the global biogeography of forest-tree symbioses. *Nature* 569(7756):404–8
- Suarez AV, McGlynn TP, Tsutsui ND. 2009. Biogeographic and taxonomic patterns of introduced ants. In *Ant Ecology*, ed. L Lach, CL Parr, KL Abbott, pp. 233–44. Oxford, UK: Oxford Univ. Press

- Taylor HR, Radford IJ, Price C, Grierson P. 2018. Low resource availability limits weed invasion of tropical savannas. *Biol. Invasions* 20(4):861–75
- Tebboth MGL, Few R, Assen M, Degefu MA. 2020. Valuing local perspectives on invasive species management: moving beyond the ecosystem service-disservice dichotomy. *Ecosyst. Serv.* 42:101068
- Tedersoo L, Bahram M, Põlme S, Kõljalg U, Yorou NS, et al. 2014. Global diversity and geography of soil fungi. *Science* 346(6213):1256688
- Teo DHL, Tan HTW, Corlett RT, Wong CM, Lum SKY. 2003. Continental rain forest fragments in Singapore resist invasion by exotic plants. *J. Biogeogr.* 30:305–10
- van der Heijden MGA, Martin FM, Selosse MA, Sanders IR. 2015. Mycorrhizal ecology and evolution: the past, the present, and the future. *New Phytol.* 205(4):1406–23
- van Kleunen M, Weber E, Fischer M. 2010. A meta-analysis of trait differences between invasive and non-invasive plant species. *Ecol. Lett.* 13:235–45
- van Kleunen M, Xu X, Yang Q, Maurel N, Zhang Z, et al. 2020. Economic use of plants is key to their naturalization success. *Nat. Commun.* 11:3201
- Veldman JW, Mostacedo B, Peña-Claros M, Putz FE. 2009. Selective logging and fire as drivers of alien grass invasion in a Bolivian tropical dry forest. *For. Ecol. Manag.* 258(7):1643–49
- Veldman JW, Putz FE. 2010. Long-distance dispersal of invasive grasses by logging vehicles in a tropical dry forest. *Biotropica* 42(6):697–703
- Vilà M, Espinar JL, Hejda M, Hulme PE, Jarošík V, et al. 2011. Ecological impacts of invasive alien plants: a meta-analysis of their effects on species, communities and ecosystems. *Ecol. Lett.* 14:702–8
- Vitousek PM, Walker LR. 1989. Biological invasion by *Myrica faya* in Hawai'i: plant demography, nitrogen fixation, ecosystem effects. *Ecol. Monogr.* 59(3):247–65
- Vreysen MJB, Saleh KM, Ali MY, Abdulla AM, Zhu ZR, et al. 2000. *Glossina austeni* (Diptera: Glossinidae) eradicated on the island of Unguja, Zanzibar, using the sterile insect technique. *J. Econ. Entomol.* 93(1):123–33
- Waddell EH, Banin LF, Fleiss S, Hill JK, Hughes M, et al. 2020a. Land-use change and propagule pressure promote plant invasions in tropical rainforest remnants. *Landsc. Ecol.* 35(9):1891–1906
- Waddell EH, Chapman DS, Hill JK, Hughes M, Bin Sailim A, et al. 2020b. Trait filtering during exotic plant invasion of tropical rainforest remnants along a disturbance gradient. *Funct. Ecol.* 34:2584–97
- Wardle DA, Bardgett RD, Callaway RM, van der Putten WH. 2011. Terrestrial ecosystem responses to species gains and losses. *Science* 332(6035):1273–77
- Witt A, Beale T, van Wilgen BW. 2018. An assessment of the distribution and potential ecological impacts of invasive alien plant species in eastern Africa. *Trans. R. Soc. South Africa* 73(3):217–36
- World Bank. 2021. World Bank country and lending groups. *The World Bank Group*. <https://datahelpdesk.worldbank.org/knowledgebase/articles/906519-world-bank-country-and-lending-groups>
- Wyckhuys KAG, Lu Y, Zhou W, Cock MJW, Naranjo SE, et al. 2020. Ecological pest control fortifies agricultural growth in Asia-Pacific economies. *Nat. Ecol. Evol.* 4(11):1522–30

# Contents

Plant Communication <i>Richard Karban</i> .....	1
The Ecological Importance of Allelopathy <i>José L. Hierro and Ragan M. Callaway</i> .....	25
Why Are Species' Traits Weak Predictors of Range Shifts? <i>Steven R. Beissinger and Eric A. Riddell</i> .....	47
From Insects to Frogs, Egg–Juvenile Recruitment Can Have Persistent Effects on Population Sizes <i>Barbara J. Downes, Barbara L. Peckarsky, Jill Lancaster, William D. Bovill, and Maria Alp</i> .....	67
The Biology of Chernobyl <i>Timothy A. Mousseau</i> .....	87
Ancient Invaders: How Paleogenetic Tools Help to Identify and Understand Biological Invasions of the Past <i>Michael Knapp, Catherine J. Collins, and Elizabeth Matisoo-Smith</i> .....	111
A Genetic Perspective on Cetacean Evolution <i>Andrea A. Cabrera, Martine Bérubé, Xênia M. Lopes, Marie Louis, Tom Oosting, Alba Rey-Iglesia, Vania E. Rivera-León, Dóra Székely, Eline D. Lorenzen, and Per J. Palsboll</i> .....	131
Evolvability: A Quantitative–Genetics Perspective <i>Thomas F. Hansen and Christophe Pélabon</i> .....	153
Effects of Selection at Linked Sites on Patterns of Genetic Variability <i>Brian Charlesworth and Jeffrey D. Jensen</i> .....	177
The Invisible Hand of the Periodic Table: How Micronutrients Shape Ecology <i>Michael Kaspari</i> .....	199
Demographic Consequences of Phenological Shifts in Response to Climate Change <i>Amy M. Iler, Paul J. CaraDonna, Jessica R.K. Forrest, and Eric Post</i> .....	221

Multispecies Coalescent: Theory and Applications in Phylogenetics <i>Siavash Mirarab, Luay Nakhleh, and Tandy Warnow</i> .....	247
Biotic and Abiotic Controls on the Phanerozoic History of Marine Animal Biodiversity <i>Andrew M. Bush and Jonathan L. Payne</i> .....	269
Are Terrestrial Biological Invasions Different in the Tropics? <i>Kwek Yan Chong, Richard T. Corlett, Martin A. Nuñez, Jing Hua Chiu, Franck Courchamp, Wayne Dawson, Sara Kuebbing, Andrew M. Liebhold, Michael Padmanaba, Lara Souza, Kelly M. Andersen, Songlin Fei, Benjamin P.Y.-H. Lee, Shawn Lum, Matthew S. Luskin, Kang Min Ngo, and David A. Wardle</i> .....	291
Evolution of Mimicry Rings as a Window into Community Dynamics <i>Krushnamegh Kunte, Athulya Girish Kizhakke, and Viraj Nawge</i> .....	315
A Dual Role for Behavior in Evolution and Shaping Organismal Selective Environments <i>William T. Wcislo</i> .....	343
The Ecology and Evolution of Model Microbial Mutualisms <i>Jeremy M. Chacón, Sarah P. Hammarlund, Jonathan N.V. Martinson, Leno B. Smith Jr., and William R. Harcombe</i> .....	363
Evolution of the Mode of Nutrition in Symbiotic and Saprotrophic Fungi in Forest Ecosystems <i>Annie Lebreton, Qingchao Zeng, Shingo Miyauchi, Annegret Kobler, Yu-Cheng Dai, and Francis M. Martin</i> .....	385
Dynamics of Ecological Communities Following Current Retreat of Glaciers <i>Gentile Francesco Ficetola, Silvio Marta, Alessia Guerrieri, Mauro Gobbi, Roberto Ambrosini, Diego Fontaneto, Andrea Zerboni, Jerome Poulenard, Marco Caccianiga, and Wilfried Thuiller</i> .....	405
The Emerging Phylogenetic Perspective on the Evolution of Actinopterygian Fishes <i>Alex Dornburg and Thomas J. Near</i> .....	427
Causes, Consequences, and Conservation of Ungulate Migration <i>Matthew J. Kauffman, Ellen O. Aikens, Saeideh Esmaeili, Petra Kaczensky, Arthur Middleton, Kevin L. Monteith, Thomas A. Morrison, Thomas Mueller, Hall Sawyer, and Jacob R. Gobein</i> .....	453
Animal Migration: An Overview of One of Nature's Great Spectacles <i>Adam M. Fudickar, Alex E. Jabn, and Ellen D. Ketterson</i> .....	479
The Alignment of Natural and Sexual Selection <i>Locke Rowe and Howard D. Rundle</i> .....	499

Evolution in Cities <i>Sarah E. Diamond and Ryan A. Martin</i> .....	519
Sensory and Cognitive Ecology of Bats <i>Rachel A. Page and Hannah M. ter Hofstede</i> .....	541
Evolution of Thermal Sensitivity in Changing and Variable Climates <i>Lauren B. Buckley and Joel G. Kingsolver</i> .....	563
Causes and Consequences of Apparent Timescaling Across All Estimated Evolutionary Rates <i>Luke J. Harmon, Matthew W. Pennell, L. Francisco Henao-Diaz, Jonathan Rolland, Breanna N. Siple, and Josef C. Uyeda</i> .....	587
What Have We Learned from the First 500 Avian Genomes? <i>Gustavo A. Bravo, C. Jonathan Schmitt, and Scott V. Edwards</i> .....	611
Cascading Impacts of Seed Disperser Loss on Plant Communities and Ecosystems <i>Haldre S. Rogers, Isabel Donoso, Anna Traveset, and Evan C. Fricke</i> .....	641

## Errata

An online log of corrections to *Annual Review of Ecology, Evolution, and Systematics* articles may be found at <http://www.annualreviews.org/errata/ecolsys>