

2018



OUUDS
Urban Design Studio



Tulsa's Deco District

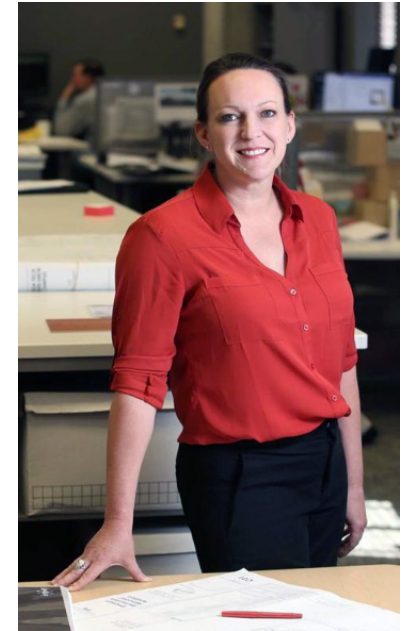
Annual Report



Our first OU graduates earning the
Master of Urban Design degree!
Robi Jones, Kyle Clifton, and
Maryam Moradian

Happy 30th Birthday!

It is hard to believe the Urban Design Studio celebrated its thirtieth anniversary this year. Since 1988, the studio has graduated more than **140 outstanding students from 22 countries**. They have become principals of architecture and design firms, real estate developers, municipal planning directors, civic leaders, and so much more! Many have become part of a community of urban designers in Tulsa, while others have travelled far and wide sharing their expertise. When the studio was founded, its graduate programs only accepted architects. Now our student body includes students from **a broad range of backgrounds and disciplines pursuing the newly revised Master of Urban Design curriculum or the Graduate Certificate in Design Entrepreneurship and Real Estate**. Both courses of study continue to be offered in a weekend and evening format that allows students to practice full-time to gain experience and prepare for professional licensure. We look forward to another thirty years of design innovation, research excellence, and student success!



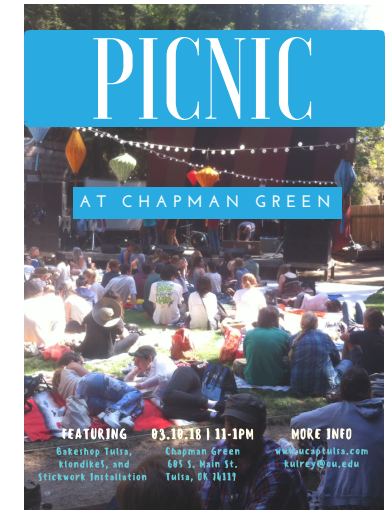
"It is a true testament to the program to see how many Urban Design Studio projects have morphed seamlessly in to the fabric of our city."

2004 Graduate, Sarah Gould,
Principal, KKT Architects



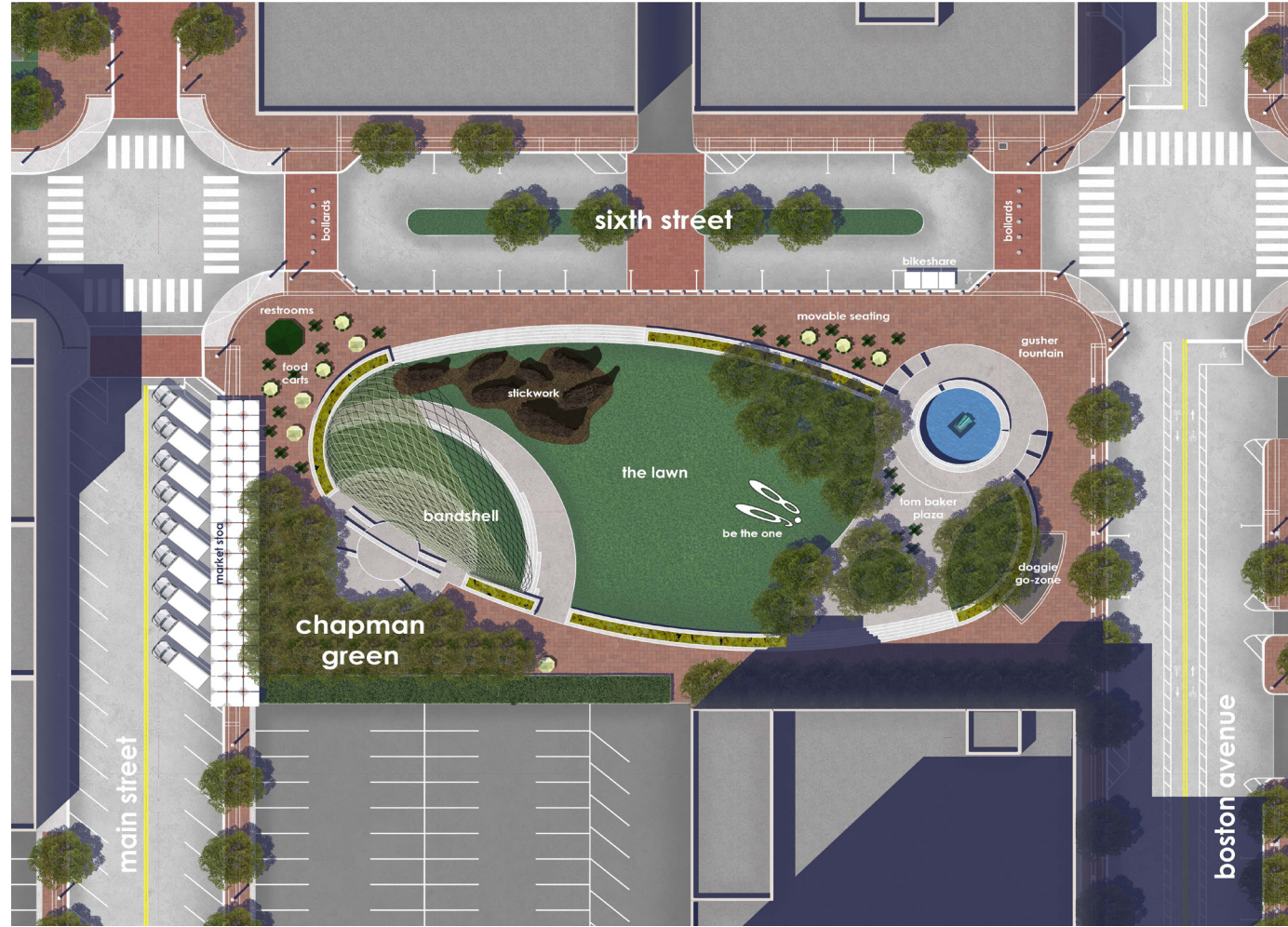
Studio Projects

During the spring, Urban Design Studio students activated **a placemaking project** for the Chapman Green in Downtown Tulsa. The project was initiated by a request from the Urban Core Art Project (UCAP) to assist with a temporary art installation for the park. UCAP obtained a grant from the National Endowment from the Arts to **bring world-renowned visual artists Patrick and Sam Dougherty to Tulsa** to create one of their imaginative Stickwork sculptures in the green. In addition to helping with the construction, the students scheduled and organized over 100 UCAP volunteers involved in the project. They also hosted a community picnic with live music by the Klondike 5 and food from start-ups at Kitchen 66. As part of the evaluation process for the NEA, the student team collected and analyzed park usage data by direct observation and time-lapse video footage before, during, and after the project's construction. The number of park visitors peaked during the building period, but post-construction numbers still remained higher than pre-construction.



Flyer for the Picnic at Chapman Green

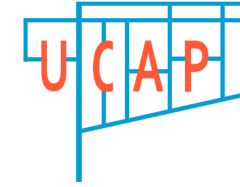




Proposed Chapman Green Plan with Placemaking Elements

Placemaking Efforts

Students facilitated bi-monthly stakeholder meetings with members of the Urban Core Art Project and representatives from the City of Tulsa Parks Department, the Deco District, Tulsa International Mayfest, Land Legacy, the University of Tulsa School of Art, and local business and property owners. **The need for regular and professional programming of events and activities became a priority** for this group. The students authored a grant proposal submitted to the H.A. Chapman Foundation trustees. The **\$365,000 grant request** to be administered by the Tulsa Parks and Recreation Board includes 6 months of art programs and fun events to be offered next summer by Tulsa Mayfest. It also includes funding for a Doggie Go-Zone designed for nearby pet owners and their dogs to keep the park clean and sanitary. Other placemaking elements include the *Be the One* sculpture (a 918 selfie spot,) movable outdoor seating, and more trees for shade. Future plans call for a band shell, a street market, and an Art Alley across the street from the park led by studio alumna Kelly Cook.



The studio wishes to recognize the members of the stakeholder committee:

Urban Core Arts Project:

Ken Busby
Linda Frazier
Holbrook Lawson
Leigh Ann Moss
Joan Seay
Bob Sober, Chair

Teresa Burkett
JoAnn Caldwell
Lucy Dolman
Blake Ewing
Krystal Grizzle
Hunt Hawkins
Susan Neal
Kirsten Olds
Michael Patton
Heather Pingry
Stuart Price
Chris Ransdell
Scott Swearingen
Teresa Valero

*Katie Wing explores
the interactive art
at the City Museum*



Public Art Field Trip

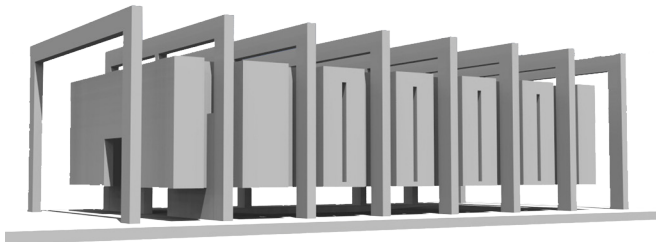
Placemaking is a collaborative, multi-faceted approach to planning, design, and managing public spaces that capitalizes on a local community's assets, inspiration, and potential with the intention to **promote people's health, happiness, and well-being**. Public art can play a vital role in making a place unique. The vision for the Chapman Green is to create a space where artists can create temporary art works that speak to the community and attract park visitors. Thanks to the generosity of UCAP, the students and faculty of the Urban Design Studio were able to **visit St. Louis** to see how public art has been successfully used there as a placemaking tool. The students spent a long weekend visiting the Souldard Farmers' Market, the City Museum, the Gateway Arch and the Museum of Westward Expansion, City Garden, Forest Park, and the Laumeier Sculpture Park. The students were able to interact with the art and talk with users about their experiences. Many thanks to UCAP for the trip and for an additional **\$10,000 gift to establish a public art scholarship fund** for studio students.



*Students visit the
Laumeier Sculpture Park*



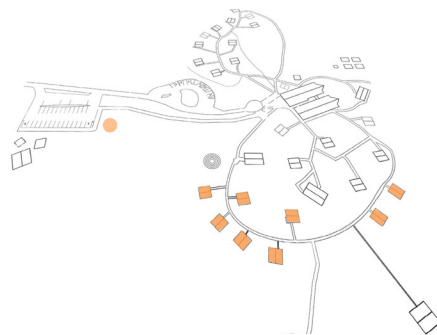
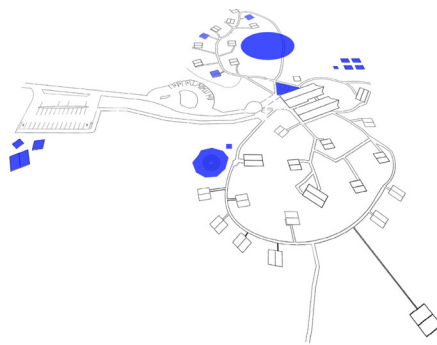
*Daniel Jeffries looks for
formal attire at City Garden
in downtown St. Louis*



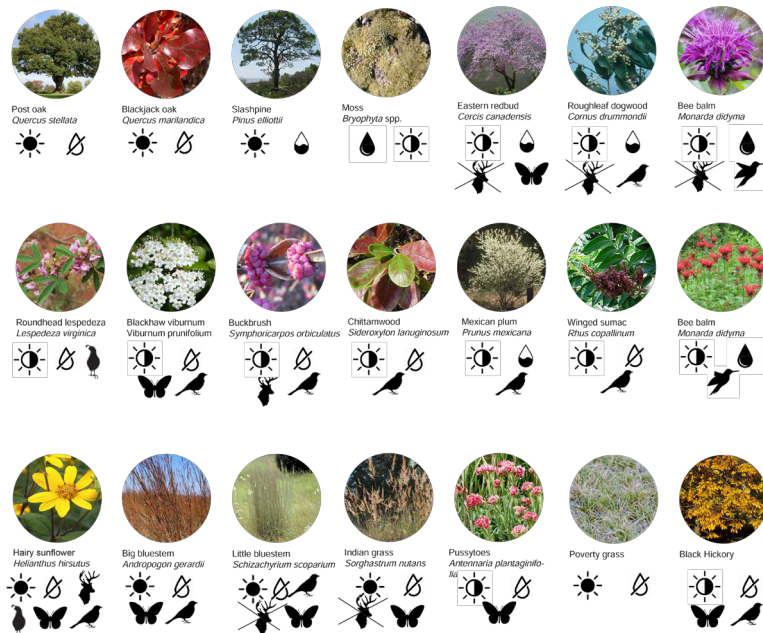
Meditation Hall



Phasing Plans



Planting Selections



Master Plan

Collaborating with Landscape Architecture students from Bret Betnar's studio and Architecture students from Tiziana Proietti's studio, the Urban Design Studio is working on **a master plan for the Osage Forest of Peace**. Located in the cross timbers of Northeast Oklahoma, this retreat center's sylvan location is ideal for people wanting to connect with mind and nature. The new plan balances the need for growth while preserving peace, quiet, and solitude. The plan includes a new meditation hall, dining facility, and multiple housing units. It also adds a columbarium and scatter garden. Parking is relocated outside of the woods and connected to an expanded trail system. **The need for sustainable infrastructure**, particularly sanitary waste disposal, is a difficult, but vital need. Protecting the camp from fire is another urgent issue. Plant selection and maintenance, such as removing invasive Red Cedar trees, is **an important part of making a resilient plan**. The studio aims to deliver the final plan to the Forest of Peace in the Spring of 2019.



Peace Pole at the Osage Forest of Peace, a non-denominational meditation and retreat center



The Osage Forest of Peace invited the students to visit the forest, spend the night, and experience the rhythms of life at a retreat. The students received instruction in mindfulness and meditation from Executive Director Don Chatfield. They also met and talked with staff and other guests. **Many thanks to the Forest for hosting us!**



Winning Concept Design
for the Liberation Cottage

Liberation Cottage Design Competition

The Osage Forest of Peace is growing to meet a demand for larger groups looking for venues to hold retreats and meetings. **A priority is to add new housing** for both guests and staff. In January, Graduate Assistants Saudamini Inamdar and Katie Wing organized a competition for teams of Architecture, Interior Design, and Construction Science students from the College of Architecture to design a prototype cottage for the forest. The design challenge asked the teams to create a double occupancy cabin with space for meditation and reflection that connects occupants with nature. The budget for the cottage was set at \$25,000 for the 400 square foot building. Teams were expected to produce **detailed cost estimates and construction details**. Staging of construction was another important criteria to ensure that the natural beauty of the forest and the peaceful life of the residents would not be disturbed during building. The Forest of Peace is currently looking for grant funding to build the prototype. They also provided \$5,000 in scholarships for the winning team.



Saudamini Inamdar studies in
one of the existing Forest of
Peace residences

Community Engagement



Students work the booth at the Greenwood Market



Fox 23 News interviews Jessi Stringer and Tristan Fox about the project



Citizens use planning games to show the students their visions for the park



Clay Harris and Jamie Pierson cook pancakes for the workshop participants

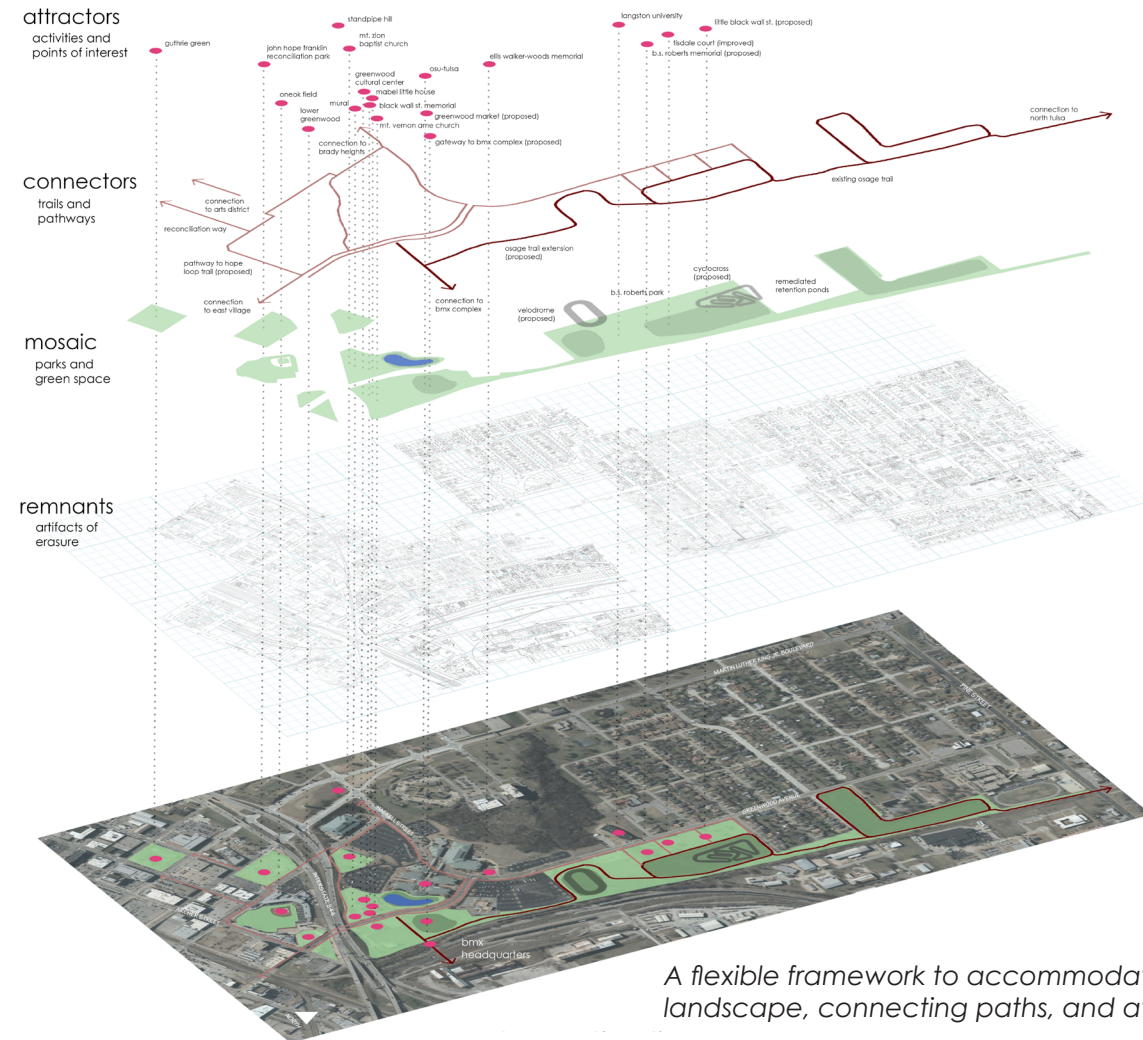


After decades of erasure, **the Historic Greenwood District is poised to grow once more.** Despite being burned down by the 1921 Race Massacre, then rebuilt and wiped out again by urban renewal and highway building, the resilient African-American community known as Black Wall Street is planning a renaissance in time for the 2021 Centennial Commemoration of the terrible events that made it a dark day in American history. Key to this renewal are the institutions located in the district: the Greenwood Cultural Center, the John Hope Franklin Reconciliation Park, Langston University - Tulsa, the Centennial Commission, CHAMP, and the church congregations. The Urban Design Studio has spent the fall getting to know the community leaders and the many proposals for public improvements ranging from recreation to economic development to cultural attractions.



In preparation for the project, Professor Schaefer visited the Equal Justice Initiative in Montgomery and the Martin Luther King Jr. National Historical Park in Atlanta

greenwood historical park



A flexible framework to accommodate layers of landscape, connecting paths, and attractions

A key feature in the district is the many parks and open spaces. The Greenwood Cultural Center asked us to look at B.S. Roberts Park for two new programs: Little Black Wall Street, an incubator for small business start-ups with an educational component, and improvements to the park's basketball court that would emulate Holcombe-Rucker Park in Harlem. Furthermore, they had just opened their Farmers Market on Saturdays at the Center, and the Irani Center for Creating Economic Wealth was working with them to increase revenues through these and other programs. We soon learned that CHAMP and the City of Tulsa have plans for public art interventions in the district, that Langston University is building a new School of Nursing, and the National Headquarters of BMX are locating at the nearby Evans-Fintube site. The Centennial Commission asked us to explore options for a new walking trail tentatively named the Pathway to Hope. We think **a flexible framework to accommodate these different projects**, perhaps in the form of a National Historical Park with an independent board representing all of the institutions, may be the best way to handle this plethora of ideas.



B.S. Roberts Park



Greenwood Cultural Center



John Hope Franklin Reconciliation Park

*Prairie Schooners at Chapman Green:
Artists, Students, and Community
Volunteers Unveil their Stickwork!*



Happy 30th Birthday Urban Design Studio!

City of Claremore Low Impact Development Manual



Kyle Clifton
Professional Project
Master of Urban Design
OU-Urban Design Studio

Cover from Kyle Clifton's
professional project

Professional Projects

The professional project is the capstone experience for the Master of Urban Design degree. Students are encouraged to select projects combining research and creative activity to benefit the community. The following projects were completed this year:

- Kyle Clifton created a **Low-Impact Development Program and Manual** for the City of Claremore to reduce urban flooding in residential and commercial areas. The new program was adopted by a City Council resolution over the summer, providing developers **a more resilient stormwater management option**.
- Maryam Moradian partnered with community leaders in West Tulsa on a **Small Area Plan for Red Fork**. Her work largely focused on how to connect neighborhoods to shopping districts and green space with better streets and trails.

The studio wishes to recognize the faculty serving on our Professional Project Committees:

Shawn Schaefer, Chair

Dave Boeck
Associate Professor of Architecture

Ron Frantz
Associate Professor of Architecture,
Coordinator of the Environmental
Design Program

Shane Hampton
Director of the Institute
for Quality Communities

Chan Hellman PhD
Professor of Social Work
Director of the Hope
Research Center

Mia Kile
Associate Professor of Interior Design

Brigitte Steinheider PhD
Associate Professor
of Organizational Dynamics

Charlie Warnken PhD
Director of the Regional and
City Planning Division



Excerpts from Daniel Jeffries' project showing how he proposes to mitigate blank walls and increase street life

- After Mayor G.T. Bynum proclaimed Tulsa a Dementia-Friendly City, Robi Jones joined the mayor's steering committee and devoted her professional project to **Designing Inclusive Urban Spaces**. Her work was featured at the Oklahoma American Planning Association Conference in October.

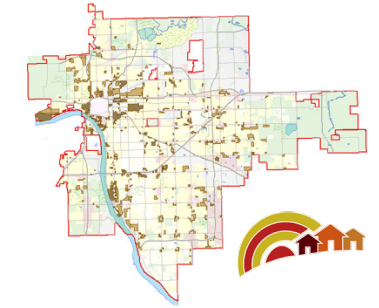
Six students started their projects this fall aiming for completion next spring:

- Joel Hensley is testing the feasibility of the Cottage Home Development Regulations in the Tulsa Zoning Ordinance in his project: **Little Homes on the Plains**.
- Saudamini Inamdar is working with **the City of Broken Arrow** in conjunction with their Comprehensive Plan update to **create a gateway** to the city at Elm Avenue leading visitors to the Rose District.
- Daniel Jeffries' project, **Lively and Livable**, focuses on improving the overlooked 2nd Street corridor and connecting the Arena District with the Blue Dome District.

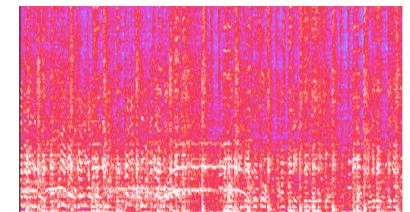
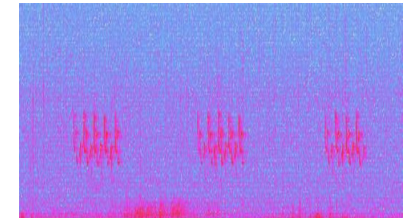
- Partnering with Parks Director Anna America, Ray Powell is engaging the SunGate Neighborhood on **a placemaking project for Explorer Park**. Due to a lack of improvements, programming, and maintenance the park, like many in Tulsa, is underutilized. He would like his process to be a model for Tulsa's neighborhood parks.

- Katie Wing's project focuses on **the Denver Avenue Station**, the main hub of Tulsa's transit system. Feedback from the Arena District Plan indicates citizens perceive the station as unsafe and undesirable. Her project looks at the perception of safety and **the role of design in public space** to reduce crime and attract choice riders to the transit system.

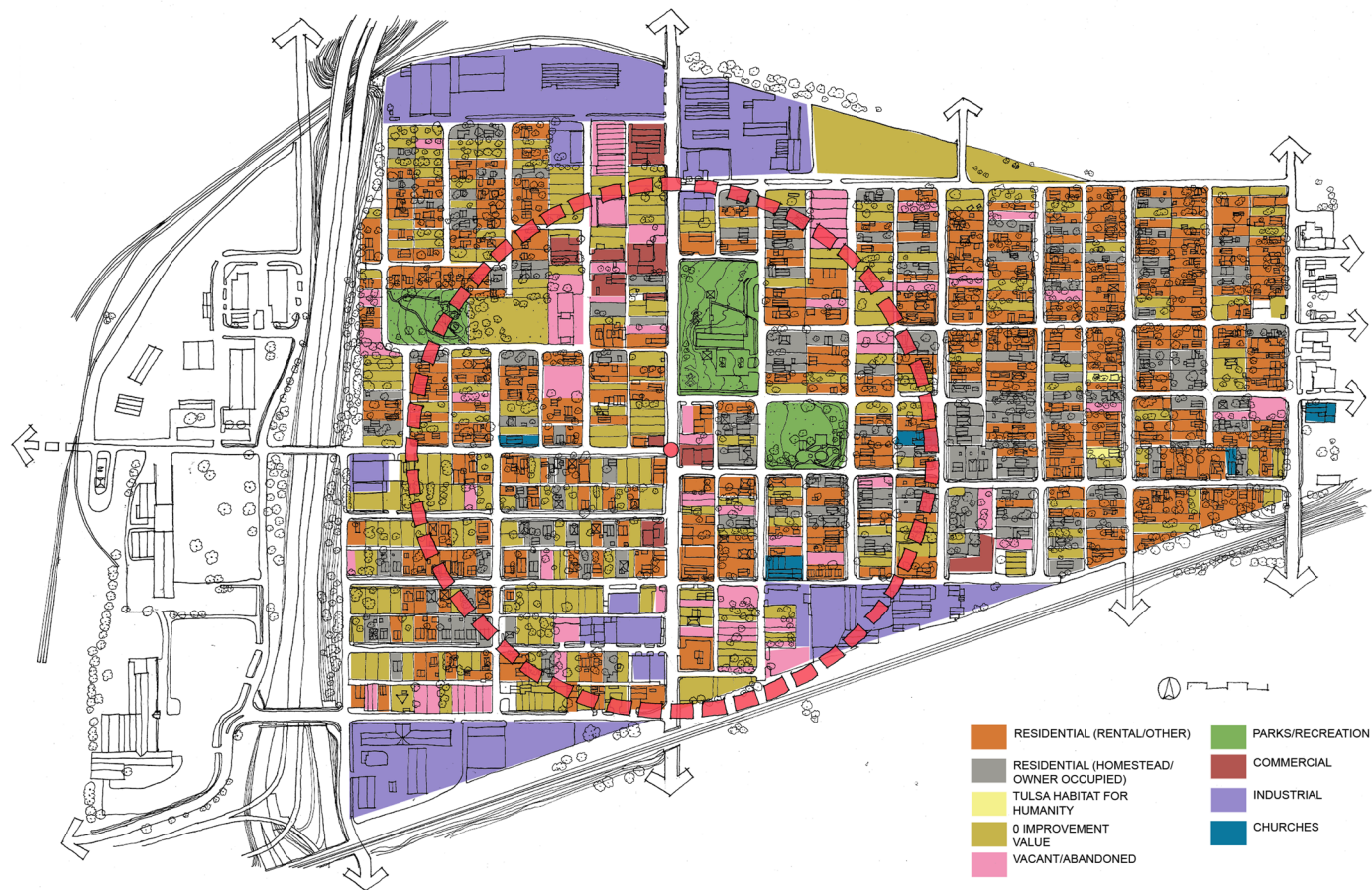
- Robbie Wing is **Exploring Urban Soundscapes** with a research project to collect and analyze urban sounds. He intends to **conduct an experiment** in the spring by introducing natural, manmade, and musical sounds to the Art Alley located across from the Chapman Green.



Geospatial analysis of zoning and parcel availability by Joel Hensley for his project



Audio spectrographs from Robbie Wing's project



Housing Analysis of Crutchfield Neighborhood

Research

Community Health and Environmental Design Studio

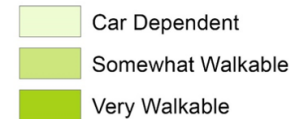


In its seventh year of operation, the CHED is a community resource promoting health and wellness through better environmental design of buildings, neighborhoods and cities. Our motto is **Better Health by Design**. The CHED has pursued an active research agenda in the last year.

➔ In June, Professor Birkes led a panel of CHED researchers, city officials, and neighborhood representations at the **Environmental Design Research Association Conference** in Oklahoma City. The panel engaged conferees with a discussion of housing conditions in the near north neighborhood of Crutchfield and the city's initiatives to improve housing stock, and attract infill development. The efforts include targeted CBDG funding, the new BMX Headquarters nearby, and a station on the city's new bus rapid transit system.



Mean Walkscore by Census Tract



City-wide walkability analysis
using Walkscore data from a
Health Impact Assessment of
Tulsa's Subdivision Regulations

- ➔ Professor Birkes taught his interdisciplinary class, **Community Health and the Built Environment**, in the spring. Ten students from Urban Design, Medicine, and Public Health collaborated on a selection of **Health Impact Assessments**, including a Review of the Revised City of Tulsa Subdivision Regulations, Housing Initiatives in the Crutchfield Neighborhood, and Food Insecurity around Emerson Elementary School. The latter project explored options for gardening and urban agriculture at the school as part of the school's new Montessori Curriculum.
- ➔ Ken Randall PhD, Julie Miller-Cribbs PhD, Jedidiah Bragg PhD, and Director Schaefer published a peer-reviewed article in the **Physical Therapy Journal of Policy, Administration, and Leadership**. Entitled, "Preliminary Investigations of Reasons Patients Miss Scheduled Appointments in Outpatient Physical Therapy," the article summarizes the findings of CHED's Non-attendance Study conducted in the last two years with patients at the OU-Tulsa Physical Therapy Clinic.

- ➔ Medical student Alizay Paracha was notified that her poster discussing failure to thrive as a health indicator of unsafe neighborhoods has been accepted for the **Southern Regional Meeting of the American Pediatrics Association** next February. Alizay is a lead researcher for Project REVIVE. The CHED is a partner with the School of Community Medicine in this study to address housing issues related to the health of OU Clinic patients.
- ➔ Professor Schaefer delivered his anchoring lecture on environmental determinants of health to the **School of Community Medicine Summer Institute** for the tenth year. He also made similar presentations for the **Tulsa Health Literacy Project** at the Tulsa City / County Library and the **Albert Schweitzer Fellows** program.
- ➔ Professor Mia Kile joined Kyong-Ah Kwon from the College of Education on a successful mini-grant proposal from the **Early Childhood Education Institute** to study how the classroom physical environment affects teacher physical and mental health.

**CHED is grateful to faculty
from many disciplines
contributing to its efforts:**

Michael Birkes AIA
Architecture

Dave Boeck AIA
Architecture

Mia Kile ASID
Interior Design

Jeanne Hayes MD
Community Medicine

April Merrill JD
Legal Aid of Oklahoma

Julie Miller-Cribbs PhD
Social Work

Ric Munoz MSW JD
Social Work

Ken Randall PhD
Physical Therapy

Mary Williams PhD
Public Health

Panel Discussion at the Changing Nature of the Suburbs Conference. L to R: Moderator Bruce Bolzle, Todd Zimmerman, Ward Davis, and David Dixon.



Service

- The Society of Urban Design Students joined with the Tulsa Chapter of the Urban Land Institute to co-host the **Changing Nature of the Suburbs** Conference. Eighty-five planners and real estate professionals attended the half-day event at OU-Tulsa.
- In November, Professor Schaefer received the **Community Service Honor Award** from AIA Oklahoma at a ceremony in Enid.
- Sharing work from the studio's Route 66: *A String of Pearls* design project from 2015, Professor Schaefer presented **Signage from a Design Perspective** at the Sign Codes for Success Workshop sponsored by the International Signage Association.
- Professor Schaefer also served on the City of Tulsa **Urban Mobility Team** advising the city on autonomous vehicle policy. The city is currently reviewing proposals for pilot projects by EAV providers.



**The Society of Urban Design
Students Officers for 2018:**

*Katie Wing
President*

*Jamie Pierson
Vice-President*

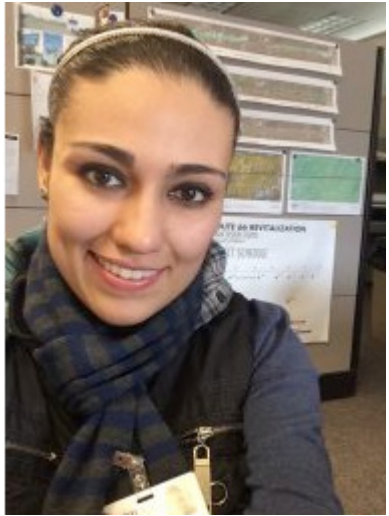
*Robbie Wing
Secretary / Treasurer*

*Joel Hensley
OUTSGA Representative*

Noteworthy



Christopher and Ania Gibbs



Paulina Baeza

- The College of Architecture has a new name: **The Christopher C. Gibbs College of Architecture**. A 1967 graduate of the college, Christopher Gibbs has made the largest gift to the college in its history. The gift will be used to fund the college's endowment and will benefit all of its programs, including the Urban Design Studio. Many thanks to Mr. Gibbs and his family!
- The Urban Design Studio was featured in the Fall 2018 issue of **Sooner Magazine** in an article by Tulsa World writer Mike Averill titled *Building Better Cities*.
- Congratulations to **Paulina Baeza** for being awarded the **Boomtown Urban Advocate Award** by the Tulsa Young Professionals.
- With funding from the **Transportation Internship Program**, Saudamini Inamdar and Katie Wing interned at **INCOG** over the summer where they collected and analyzed active transportation data.

- **Warren Ross, President of Ross Group**, is joining the faculty to teach Design Entrepreneurship and Leadership next spring. Mr. Ross has been a key leader in the revitalization of Downtown Tulsa with his company undertaking many construction and development projects, most recently the rehabilitation of the Tulsa Club.
- Urban design student Katie Wing joined a team from the **Irani Center for Creating Economic Wealth** working on a project for the Greenwood Cultural Center. The team analyzed the center's programs and operations. They provided recommendations for attracting more visitors and increasing revenue.
- The Urban Design Studio presented the **Tulsa Foundation for Architecture / AIA Eastern Oklahoma Year-End Celebration**. Thanks to the Christopher C. Gibbs College of Architecture, Tom Wallace, Tom Costner, Rachel Zebrowski, and Professor Schaefer for underwriting the event.



Warren Ross



Weldon Bowman, center



Ed Sharrer

Alumni News

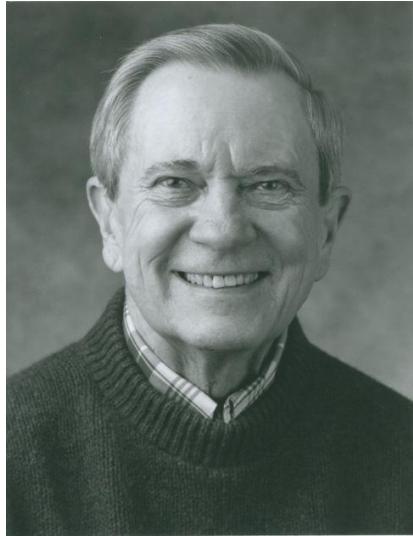
- It has been quite a year for **Weldon Bowman, 2003**. He was named Small Businessperson of the Year by the Tulsa Regional Chamber of Commerce in October. His firm, **W Design** won **Firm of the Year** at the AIA Year-End Event.
- Two Urban Design Studio alumni were awarded **TYPros Foundation** grants. **Paulina Baeza, 2017**, received funding for bike racks and murals in East Tulsa. Alumna **Kelly Cook, 2016**, and the Deco District's Libby Billings landed start-up funding for their Art Alley project.
- **Sarah Gould, 2004**, announced that her firm, KKT Architects, was selected to design the **Tulsa Childrens Museum and Discovery Lab** as part of the second phase of the Gathering Place.
- After ten successful years as Executive Director of Kendall-Whittier Main Street, **Ed Sharrer, 2007**, is moving over to INCOG to lead the **Destination Districts** office.

- The City of Guthrie won the **American Planning Association's Great Neighborhood Award** for its historic district. Guthrie Planning Director, **Rebecca Blaine, 2014**, accepted the award on behalf of the city at the APA's Great Places Ceremony in Washington DC.
- **Joe Spence, 2004**, recently retired from his position as projects manager for the Osage Tribe. Prior to serving the tribe, Joe was Facilities Director for Northeastern State University. Happy retirement, Joe!
- Bixby Planning Director, **Marcae' Hilton, 2011**, helped design and plan Charley Young Park. The park won a **Great Public Space Award** from the Oklahoma Planning Association.
- **Darshan Patel, 2005**, Principal of fresharkitektur, was elevated to **President Elect of the AIA Eastern Oklahoma Chapter**. Darshan will serve as President for the 2020 calendar year.



Rebecca Blaine, right

In Memoriam



Robert Lawton Jones
1925 - 2018

Our birthday celebrations were tinged by sadness on September 14th when we learned of the death of the Urban Design Studio's founder and first Director Bob Jones. Bob's vision to bring a program devoted to the design of the built environment to Tulsa has directly led to a dynamic community of urban designers. Bob's list of accomplishments is long. He earned professional degrees from Notre Dame and the Illinois Institute of Technology while studying with Ludwig Mies Van der Rohe and Ludwig Hilberseimer. He practiced with Perkins & Will and Egon Eiermann before founding the firm of Murray Jones Murray with partners David G. Murray and Lee Murray. MJM was a finishing school for young architects for decades. Bob's designs include Tulsa International Airport, the Jones House, and St. Patrick's Church, winner of the AIA 25-Year Award. Later, Bob joined the OU College of Architecture faculty teaching in Norman before starting the Urban Design Studio in 1988. Bob was an inspired teacher, a devoted mentor, and a visionary educator. His presence will be sorely missed.

People

Faculty

Shawn Schaefer AIA, AICP
Kevin Anderson
Paulina Baeza
Michael Birkes AIA
Jay Chandler JD
Arjan Jager
Greg Warren ASLA

Graduate Students

Kyle Clifton
Tristan Fox
Clay Harris
Joel Hensley
Saudamini Inamdar
Daniel Jeffries
Robi Jones
Maryam Moradian
Chris Paulsen
Jamie Pierson
Ray Powell
Jessi Stringer
Katie Wing
Robbie Wing

Professional Advisory Board

Michael Birkes AIA
Principal, Michael Birkes Architecture

Clarence Boyd
VP, Commercial Banker, Stillwater National Bank

Tom Costner MD
Director of Palliative Care, St. Francis Health System

Farhad Daroga AICP
Director of Special Projects, City of Broken Arrow

Paul Dentiste AICP, FIBA
Consultant

John Griffin CNU
Urban Designer, Selser Schaefer Architects

Steve Olsen AIA
Principal, Steve Olsen Architects

Tom Wallace PE
President, Wallace Engineering

Dawn Warrick AICP
Advisory Board Chairperson

Rachel Zebrowski AIA
President, Miles Associates

The University of Oklahoma Urban Design Studio is founded on its three-part mission: to **train urban design professionals** through graduate programs in urban design and real estate, to **advance understanding of the city** through research and creative activity, and to **engage in community design** projects benefiting Tulsa and Northeast Oklahoma.

Contact Us

The Urban Design Studio is always looking for promising students and interested community partners for its programs and projects. Please contact us for more information:

The University of Oklahoma
Urban Design Studio
Shawn Michael Schaefer, Director
4502 East 41st Street
Tulsa, Oklahoma 74135
918.660.3493
sschaefer@ou.edu

<http://www.ou.edu/tulsaSooners/degrees-programs/architecture>
or visit the CHED and OUUDS on facebook

The University of Oklahoma is an Equal Opportunity Institution.

Urban Design Studio
College of Architecture
The University of Oklahoma
4502 East 41st Street
Tulsa, Oklahoma 74135

