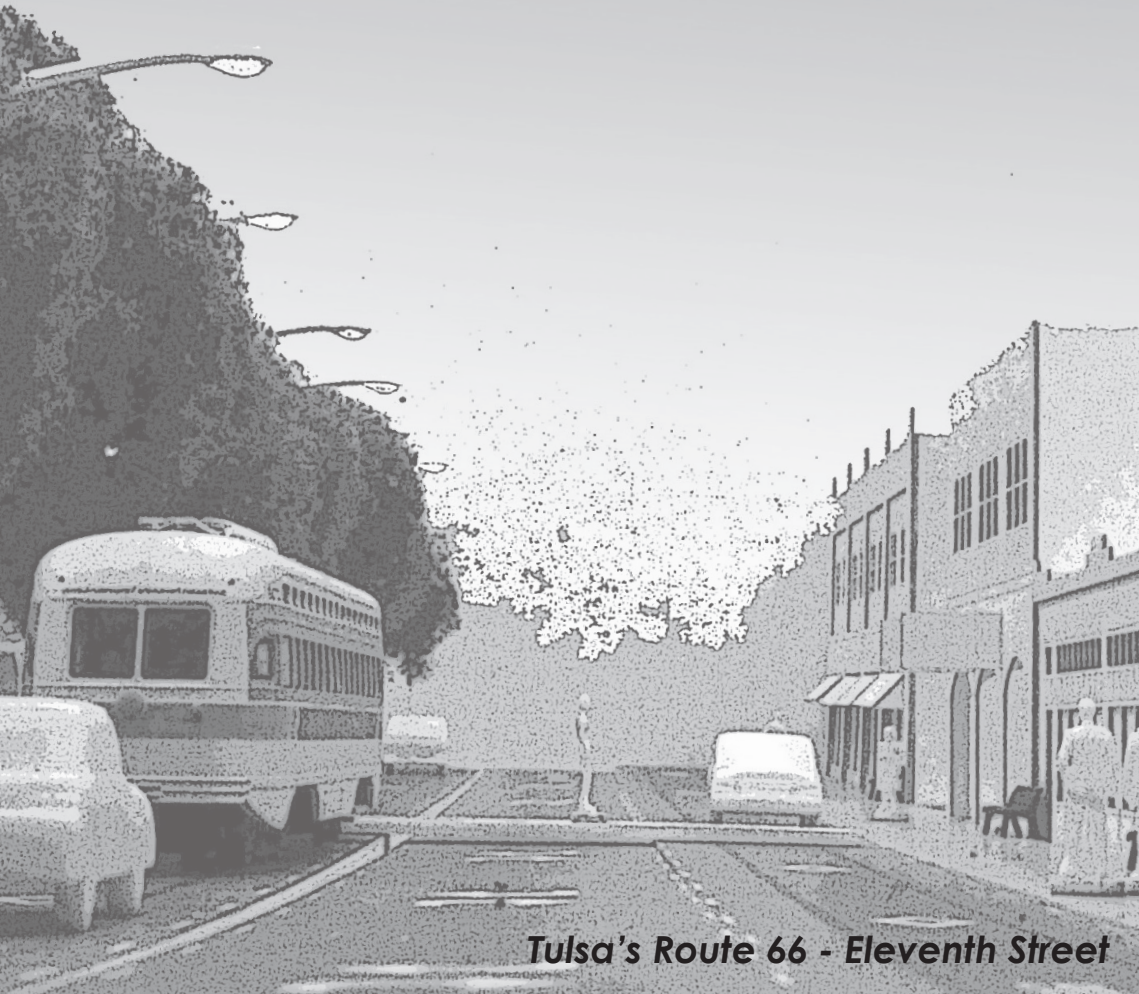


# 2015

# OUUDS

Urban Design Studio



*Tulsa's Route 66 - Eleventh Street*

# Annual Report



## Mission

The University of Oklahoma Urban Design Studio was founded in 1988 with the three-part mission to **train urban design professionals** through master's degree programs in architecture and urban studies, to **advance understanding of the city** through research and creative activity, and to **engage in community design** projects benefiting Tulsa and Northeast Oklahoma.





**Amanda Yamaguchi  
and Paulina Baeza**

## People

### Faculty

Shawn Schaefer AIA, AICP  
Kevin Anderson  
Michael Birkes AIA  
Jay Chandler JD  
Arjan Jager  
James Wagner PE, AICP  
Greg Warren ASLA

### Graduate Students

Paulina Baeza  
Curtis Blevins  
Kelly Cook  
Nathan Foster  
Joel Hensley  
Aminmahmoud Irani  
Maryam Moradian  
Jessica Shelton  
Daniel Sperle  
Kasey St. John  
Amanda Yamaguchi

### Professional Advisory Board

Michael Birkes AIA  
Principal, Michael Birkes Architecture

Steve Carr  
Senior Planner, City of Tulsa

Tom Costner MD  
Director of Palliative Care, St. Francis Health System

Farhad Daroga AICP  
Director of Planning, City of Broken Arrow

Joani Dotson MPH  
Assistant Director, Tulsa Health Department

John Griffin CNU  
Urban Designer, Selser Schaefer Architects

Steve Olsen AIA  
Principal, Steve Olsen Architects

Tom Wallace PE  
President, Wallace Engineering

Dawn Warrick AICP  
Director of Planning, City of Tulsa

Rachel Zebrowski AIA  
President, Miles Associates



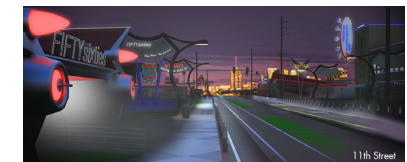


*Urban Design Studio students, Amanda Yamaguchi, Daniel Sperle, and Curtis Blevins, organized the Route 66: A String of Pearls project from start to finish.*

## Studio Projects

### Route 66: A String of Pearls

In the fall of 2014, students from the Urban Design Studio began a community-based, service-learning project working with stakeholders in Tulsa to discover ways to **revitalize a commercial stretch of old Route 66**. Several large institutions and businesses, including Bama Pie Company, Hillcrest Medical Center, and the University of Tulsa, as well as local attractions such as Tally's Café, anchor this three and half mile segment of 11th Street. However, despite these assets and the favorable perception of Route 66 by locals and tourists alike, the reputation of 11th Street is a main street past its prime. Working as a team, the Tulsa students developed a brief and organized **an urban design competition** for architecture and landscape architects from the College of Architecture in Norman. Divided into seven teams, each group of students was challenged to transform a different major intersection along the corridor.



*Student Design Renderings*





**Over 300 visitors attended the String of Pearls Exhibit at the Numbered Car Company on April 12<sup>th</sup>.**

Their charge was to propose interventions that would preserve and re-use historic buildings, develop new permanent and temporary uses on vacant lots, reconfigure the street section using Complete Streets principles, improve the streetscape and lighting, display cultural artifacts, specifically vintage cars, and finally, design new or restore existing signage. A professional jury evaluated the teams' submissions and awarded the winning team **scholarships for travel**. All of the entries were displayed in a public exhibit hosted in Tulsa in April 2015.

The Institute for Quality Communities made it possible to bring renowned urbanist, Gil Peñalosa, from the 8 to 80 Foundation to facilitate a **Complete Streets Workshop** for the city planners and engineers redesigning 11<sup>th</sup> Street. The Urban Design students devised an innovative hands-on model for simulating different street configurations with scale buildings, drive lanes and streetscape elements.

*The studio wishes to thank the sponsors of the String of Pearls project:*

Signage Foundation Inc.  
INCOG  
Lobeck-Taylor Foundation  
Bama Pie Corporation  
Cherry Street Farmers' Mkt.  
Karen Gray, Ph.D.  
The Campbell Hotel  
MTTA  
Blake Ewing  
Tally Alame  
IQC  
Kevin Anderson  
3M  
Tulsa Historical Society



*The winning design team poses with the jury.*



*OUUDS student, Daniel Sperle, incorporated images of historic Route 66 neon signs into the graphic branding for the 2015 National Signage Research and Education Conference.*

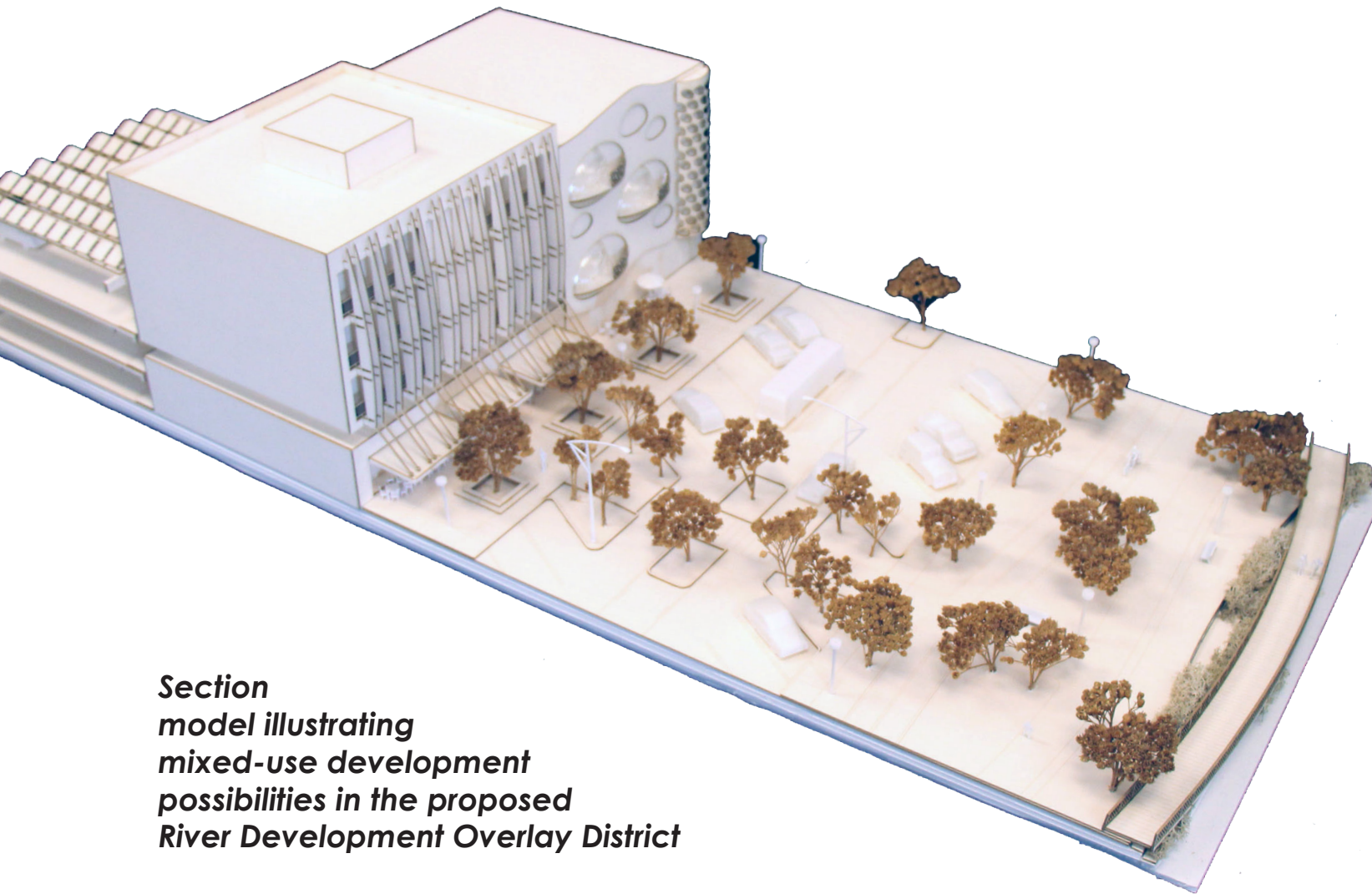


Much has happened since the completion of the project in May. Project faculty, Shawn Schaefer, Stephanie Pilat, Scott Williams and Jay Yowell presented the project at the National Signage Research and Education Conference in October. Professor Schaefer and several students travelled to Kansas City to **demonstrate the complete streets model at the APA Quad-States Conference** where the project also received a Certificate of Recognition from APA Oklahoma. Back in Tulsa, Russ Roach, Chair of the project's **Community Stakeholder Committee**, is working on a website to market Route 66 and organize a business improvement district. The Lobeck-Taylor Foundation is starting a Food Hub at 11<sup>th</sup> Street and Lewis Avenue as part of their efforts to redevelop the former Tulsa Produce Market. City engineers unveiled plans for the first segment of 11<sup>th</sup> Street to be rehabilitated with bike lanes and pedestrian improvements. Finally, Tally Alame opened Talliano's Pizza continuing his investment in developing the Yale Avenue intersection.



*Planners at the APA Quad-States Conference create complete streets.*





**Section  
model illustrating  
mixed-use development  
possibilities in the proposed  
River Development Overlay District**

## Visions for the West Bank of the Arkansas River

Studio Director, Shawn Schaefer, began serving on the City of Tulsa River Development Task Force in March. The group is charged with identifying ways to encourage and regulate **high-quality development** of Tulsa's riverfront. Graduate research assistants working at the studio have been involved building scale models like the one shown to the left. They tested the River Overlay zoning regulations developed by INCOG's planners with a scenario planning game. Most recently, they teamed up with architects led by Ted Reeds at the McIntosh Group to create before and after photomontages to illustrate **possible development alternatives**. Their work was presented to Mayor Dewey Bartlett and several City Councilors during a bus tour of the river development sites. It was also featured in **The Frontier** online magazine.

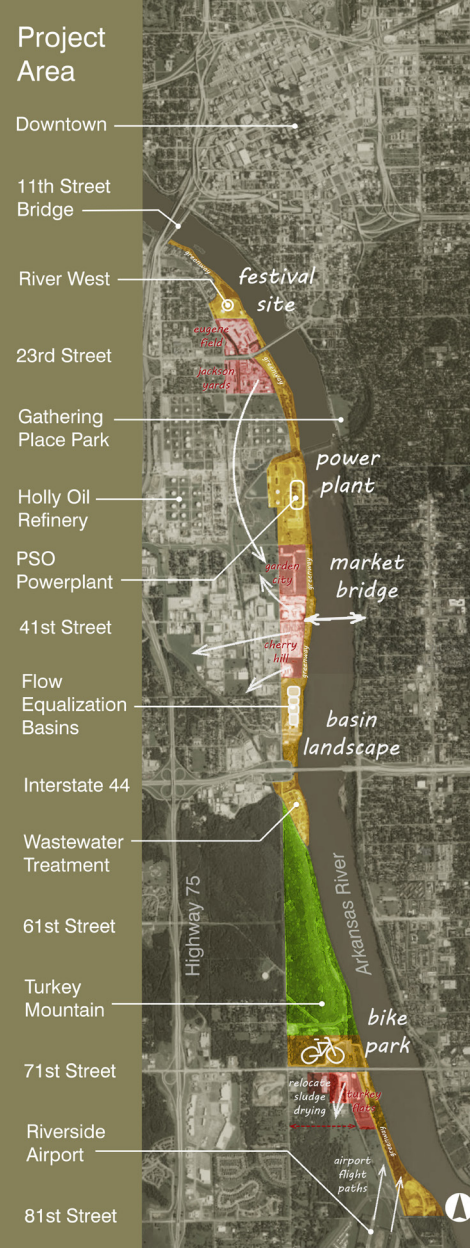


*Scouting development sites  
on the bus tour*



*Students testing river  
development scenarios*





Our current studio project also has its roots in the river development effort and the renewal of the Vision 2025 Sales Tax. Much of the west bank of the Arkansas River is undeveloped or occupied by industrial uses, but it has **hidden potential** with great views of the river and downtown Tulsa and easy access to expressways and the RiverParks trail system. Much like last year, the urban design students are developing **a framework for a series of design challenges** for teams of landscape architecture and architecture students next spring.

**An urban design  
framework for over six miles  
of riverfront along the West Bank  
of the Arkansas River, anchored by the  
Turkey Mountain Urban Wilderness shown above.**



## The Railyard Bike Park



## Joel Hensley with a young designer



## The Disco Drome



## Cyclocross in Owen Park

# TULSA bikepark

TURKEY MOUNTAIN - RIVER WEST BANK



One of these design challenges is a **new bike park** adjacent to the mountain bike trails on Turkey Mountain. The new park would include a wide variety of activities including venues for track racing, cyclocross, BMX, trials, flow trails, pump tracks, skill building courses, and support areas for food trucks, staging and services. Urban design students, Paulina Baeza, Maryam Moradian, and Joel Hensley having collaborated with bike park sponsor, **Tulsa Tough**, to write a design program, analyze the site, and engage the cycling community. This fall the students conducted outreach events at the **Cain's Ballroom** during the Disco Drome Track Races and the **Hurtland Cyclocross** at Owen Park. They also made field trips to BMX Grand Nationals at Tulsa Expo Square, the Oklahoma Bike Summit, and the Railyard Bike Park in Rogers, Arkansas where they met with the designers from Progressive Trail Design.





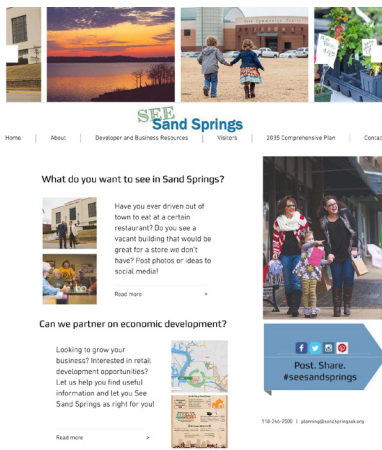
Riverwood Housing Types

# Professional Projects

Three students successfully defended their professional projects this year:

- ➔ Jessica Shelton completed an **Assessment of Multi-Family Housing in the Riverwood Neighborhood**. Her project catalogued housing conditions in the vicinity of 61<sup>st</sup> Street and Peoria Avenue and developed recommendations and guidelines for property owners and apartment managers. Her project was awarded first prize in the community outreach category at the OU-Tulsa Research Forum.
- ➔ Amin Irani explored **How Walkable Downtown Development Can Save Tulsa from Sprawl**.
- ➔ Kasey St. John launched an economic development plan and web site for the City of Sand Springs titled: **See Sand Springs**. The plan includes a thorough assessment of the city's economy with recommendations for implementing an economic development strategy.

See Sand Springs Home Page



© 2023 by Graduate Center. Privately created with Wix.com



WWW.TULSATRANSIT.ORG

## Route 66: A String of Pearls Design Team

1310

SPECIAL SERVICE





# Competitions

The studio submitted two entries to design competitions during 2015:

➔ Professor Schaefer and Paulina Baeza tendered a submission to the **DenCity International Design Competition** sponsored by Global Shelter. Their design explored equity imbalances in global megacities and ways to provide informal housing while simultaneously allowing market-based commercial development.



DenCity Design Renderings

➔ Later in the year, Professor Schaefer also entered the **National Peace Corps Commemorative Design Competition** to create an urban place in a triangular fragment of L'Enfant's grid for Washington D.C. near the U.S. Capitol. The design uses a series of sensory and spatial experiences that embody the core values of the Peace Corps to help Americans better understand other peoples, help other peoples better understand Americans, and work together to meet needs and share experiences.



Peace Corps Commemorative Competition Board





*Tahlequah Arts District Gateway*

## Service

- ➔ In addition to working with the City of Tulsa on river development, Maryam Moradian, Amanda Yamaguchi, and Paulina Baeza, have assisted the city with the **Crosbie Heights Small Area Plan**. They facilitated citizen groups at a workshop in August organized by city planners, Martha Schultz and Joel Hensley (also, an urban design student.) Subsequently, they have been collaborating with architects from the AIA Eastern Oklahoma Chapter to develop design visions for the plan.
- ➔ In September, Professor Schaefer and several students joined Shane Hampton, Hope Mander, Matthew Crownover, and Ron Frantz from the Institute for Quality Communities for a **DesignWorks Charette for the Cultural District in Tahlequah**. After touring Main Street, they met with community leaders to brainstorm and set priorities. The result was a list of interventions ranging from public art to pedestrian improvements, signage and lighting.

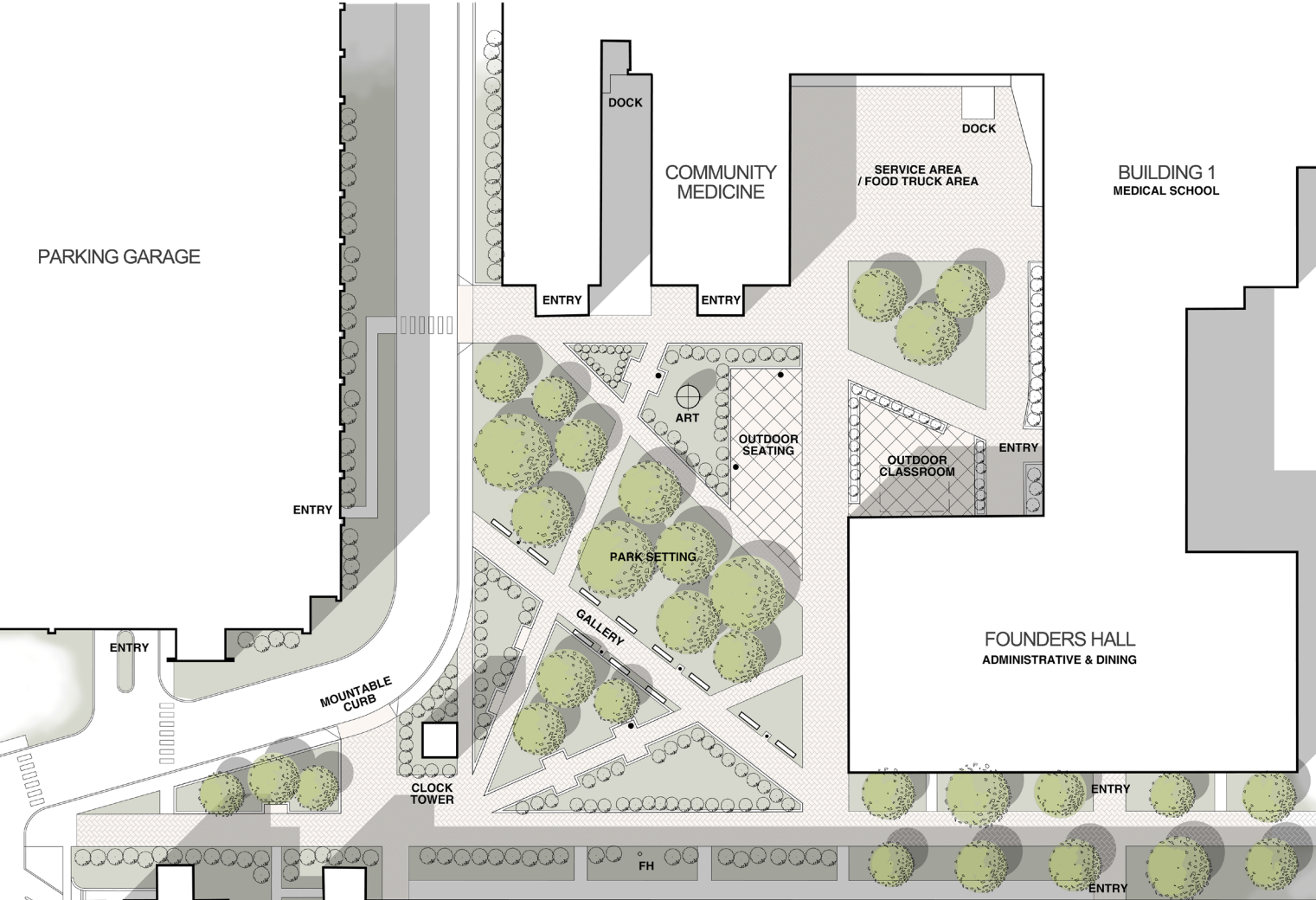


*The Blue Jackalope Grocery in Crosbie Heights*



*Creative Placemaking Guide*





*Jessica Shelton's plan for a campus plaza*

- ➔ The studio provides service by offering planning and design assistance for the OU-Tulsa campus. Professor Greg Warren assigned students in the Landscape Architecture for Urban Design class a project to design a **campus plaza** in front of the new Tandy Education Center as recommended by the Sustainable Landscapes Plan.
- ➔ Professor Schaefer created a design rendering for an **Innovation Hub** on campus that was presented to the city council for Vision 2025 Sales Tax consideration.



*Concept for an Innovation Hub*





## Hawthorne Park



## CHED

### Community Health and Environmental Design Studio

In its fourth year of operation, the CHED is a community resource promoting health and wellness through better environmental design of buildings, neighborhoods and cities. Our motto is **Better Health by Design**. The CHED has engaged in a variety of educational outreach, research, and community design projects in the last year.

➔ Professor Birkes taught his interdisciplinary class, **Community Health and the Built Environment** in the spring. Students from Urban Studies, Public Health, Public Administration, and Organizational Dynamics collaborated on a Health Impact Assessment of the City of Tulsa's program to close and sell city parks. The students scoped and assessed several parks slated for closure, including: Hawthorne Park, Loving Park, and Lantz Park.

*CHED is grateful to faculty from many disciplines contributing to its efforts:*

*Michael Birkes, AIA  
Architecture*

*Cecy Brown Ph.D.  
Library and  
Information Studies*

*Julie Miller-Cribbs Ph.D.  
Social Work*

*Mia Kile ASID  
Interior Design*

*Ric Munoz J.D.  
Social Work*

*Ken Randall Ph.D.  
Physical Therapy*

*Mary Williams Ph.D.  
Public Health*



*Paulina Baeza assists by interpreting for Spanish speakers at Sequoyah School.*



- ➔ Professors Mia Kile and Cecy Brown with graduate student, Amanda Yamaguchi, had a paper accepted by the **Heartland Campus Compact Conference** describing CHED's involvement in the design and renovation of the Oklahoma Juvenile Justice Center Library.
- ➔ Ms. Yamaguchi started her professional project last fall partnering with **Sequoyah Elementary**. She hopes to identify ways to encourage parents to let students walk and cycle to the neighborhood school.
- ➔ Professor Schaefer delivered an anchoring lecture to the **School of Community Medicine Summer Institute** for the seventh year. He also made a presentation about CHED at the Pediatrics Grand Rounds.
- ➔ The CHED has begun an ongoing research project to study non-attendance at the OU Physicians' **Physical Therapy Clinic**. Students working with Professor Ken Randall are calling patients to find out ways to reduce missed appointments.



## The Urban Design Studio at The University of Oklahoma - Tulsa



invites you to the lunch and talk

### WHAT IS AN 8-80 CITY?

Creating Healthy and Vibrant Communities. *Now!*

by renowned international urban planner,



**March 24th, 2015  
12:30 pm - 2:00 pm**

**At the Learning Center - Room 145  
East Side of Campus**

**OU- Tulsa  
Schusterman Center  
4502 E. 41st Street  
Tulsa, OK 74135**

For more information, please write to  
[beatriz.paulina.baeza.pinal-1@ou.edu](mailto:beatriz.paulina.baeza.pinal-1@ou.edu)  
or call (918) 816-1703

**This event is free of charge with lunch included for the first 90 participants**

For assistance with disability accommodations, please contact us as well

## SUDS

### The Society of Urban Design Students

The SUDS has also had an active year with several activities.

- ➔ In March, SUDS hosted a talk by Gil Penalosa: **What is an 8-80 City?** Over 70 planners, citizens, and students attended the event made possible by a grant from INCOG and support from the IQC. Next year, SUDS will be hosting urbanist and transportation planner, Gabe Klein.
- ➔ SUDS President, Daniel Sperle, joined a team from the **Center for Creating Economic Wealth** to create a strategy for a Tulsa-based energy start-up to grow the market for geothermal energy use in residential developments. He was selected to be team leader for the next CCEW project in the spring.

*SUDS Officers:*

*Daniel Sperle  
President*

*Amanda Yamaguchi  
Vice-President*

*Paulina Baeza  
Secretary / Treasurer*

*Joel Hensley  
OUTSGA Representative*

*Curtis Blevins  
OUTSGA Representative*



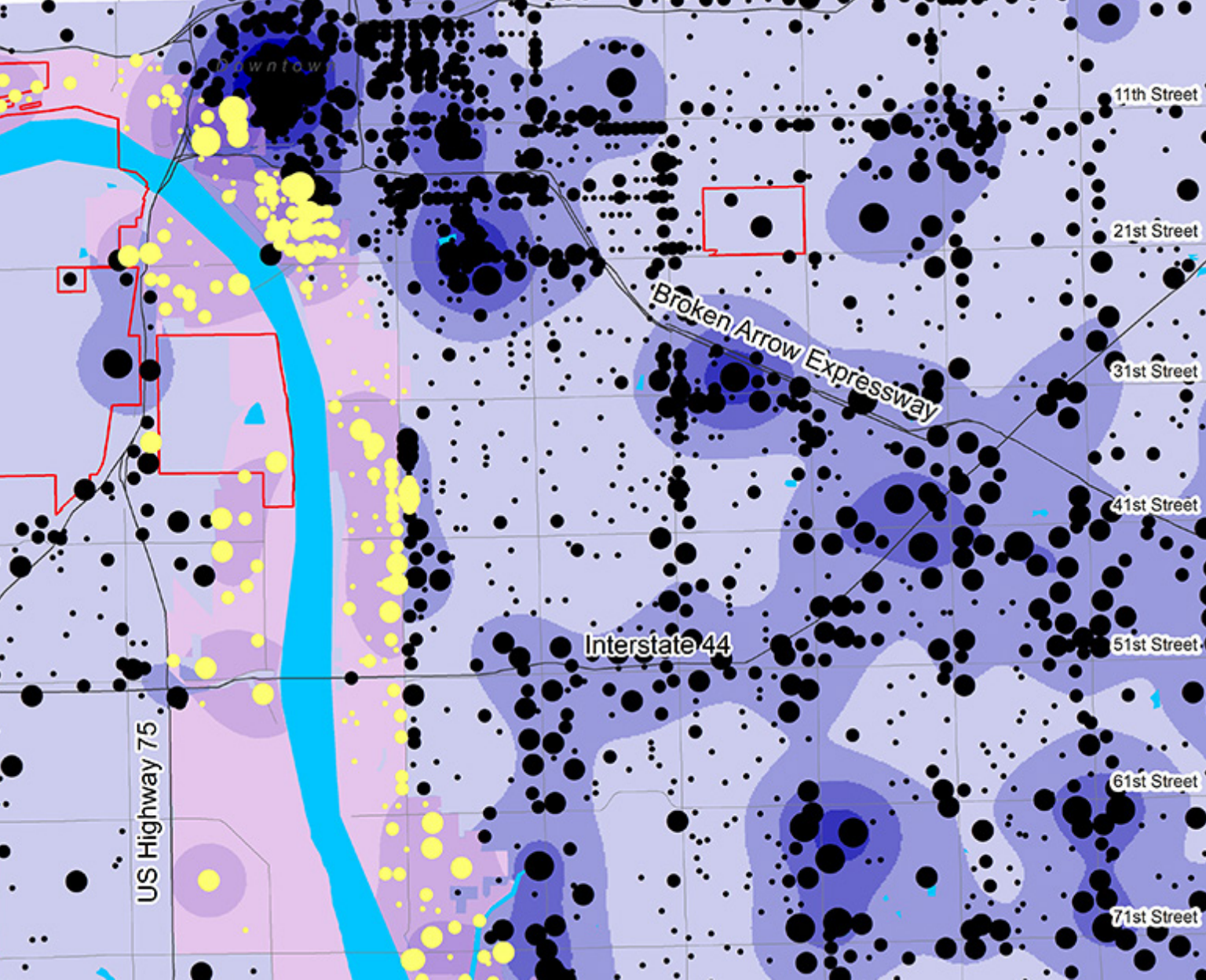
**SUDS presents teddy bears  
to the OU-Tulsa Library Staff**



- ➔ In September, SUDS teamed up with the American Society of Landscape Architects and downtown eateries to repurpose on-street parking spaces for pedestrians during global **Parking Day** festivities.
- ➔ Members of SUDS celebrated Halloween with a Pumpkin Carving Contest at the OU-Tulsa Student Government Association party.
- ➔ SUDS collected over fifty stuffed animals for the annual **Christmas Teddy Bear Drive** sponsored by the OU-Tulsa Schusterman Library. All of the toys go to kids served by the Children's Justice Center.







## Noteworthy

- ➔ In addition to running his architecture practice and coordinating the CHED studio, Professor Birkes was recently elected **AIA Eastern Oklahoma Chapter President** for 2016. Congratulations, Michael!
- ➔ Professor Schaefer has completed six years on the Board of Trustees of **Tulsa Hub**. The Hub organizes bike clubs in schools and provides bikes to adults through its Adult Cycling Empowerment program.
- ➔ Arjan Jager joined the faculty to teach **Urban Design Theory**. Professor Jager is the Senior Urban Designer for the City of Oklahoma City and former Principal of Orange Design. He taught previously at the Academy of Architecture in Amsterdam.
- ➔ The Master of Science in Architectural Urban Studies completed its Academic Program Review conducted every seven years by the university.



Michael Birkes AIA



Arjan Jager





## Contact Us

The Urban Design Studio is always looking for promising students and interested community partners for its programs and projects. Please contact us for more information:

The University of Oklahoma  
Urban Design Studio  
Shawn Michael Schaefer, Director  
4502 East 41st Street  
Tulsa, Oklahoma 74135  
918.660.3493  
sschaefer@ou.edu

<http://tulsagrad.ou.edu/studio>  
or visit the CHED and OUUDS on facebook



Urban Design Studio  
College of Architecture  
The University of Oklahoma  
4502 East 41st Street  
Tulsa, Oklahoma 74135

