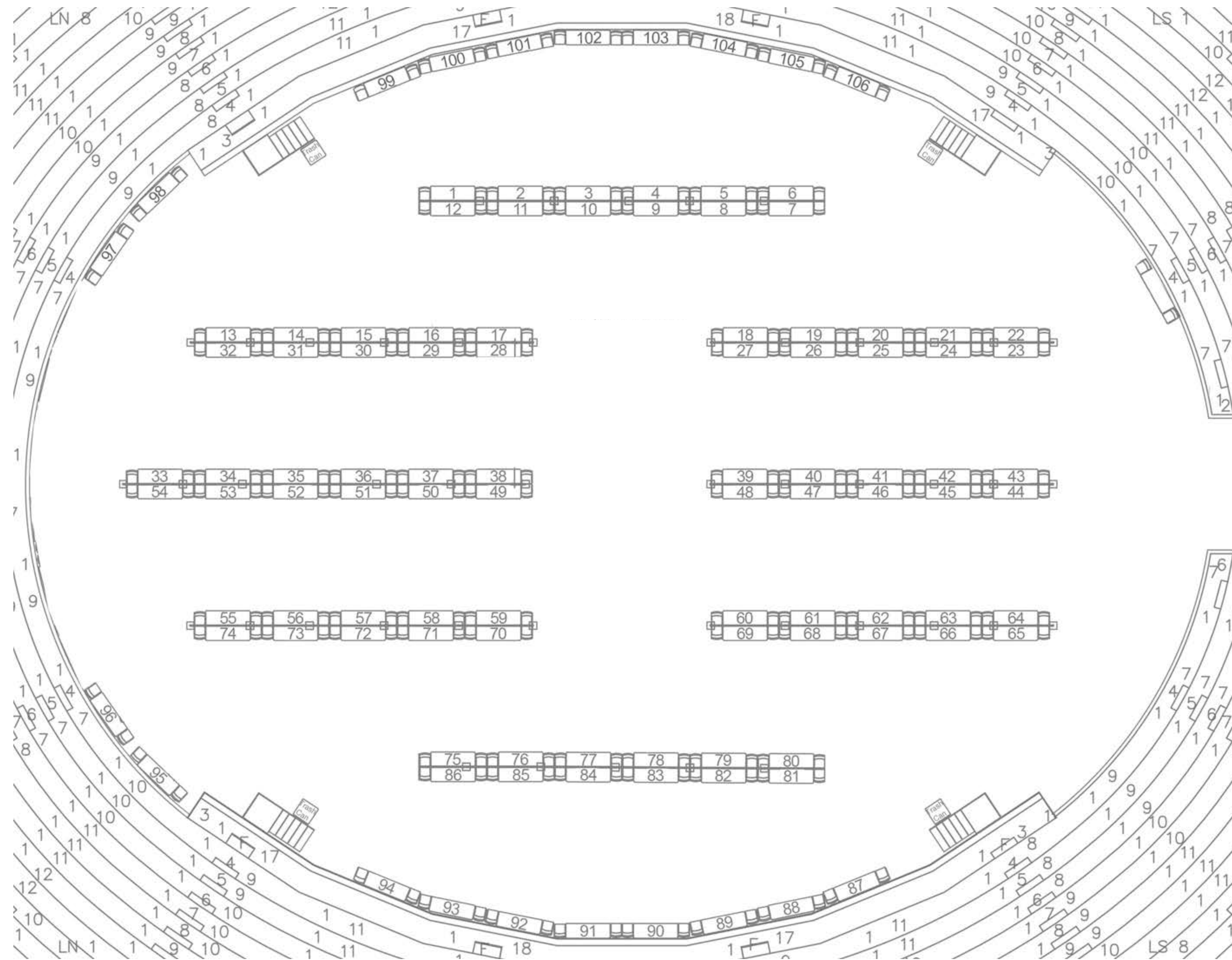


# Floor Level (Court)

- 1L. Air Force Sustainment Center – Tinker
- 2L. Air Force Sustainment Center – Tinker
- 3L. 360 Engineering Group, PLLC
- 4L. AAF Flanders
- 5L. Chevron Phillips Chemical
- 6L. Chevron Phillips Chemical
- 7L. Agilis Engineering, Inc.
- 8L. Aguirre & Fields, LP
- 9L. Halliburton
- 10L. Halliburton
- 11L. Alliance Steel, Inc.
- 12L. ArcBest
- 13L. ConocoPhillips
- 14L. ConocoPhillips
- 15L. Alvine Engineering
- 16L. ARCO
- 17L. Ascent Resources
- 18L. Ardurra
- 19L. ASRC Federal
- 20L. AtkinsRéalis
- 21L. Devon Energy
- 22L. Devon Energy
- 23L. Matador Resources Company
- 24L. Matador Resources Company
- 25L. Audubon Companies
- 26L. Benchmark Group
- 27L. BPX Energy
- 28L. Baker Hughes Company
- 29L. BKL, Inc.
- 30L. BlueArc Innovations, LLC
- 31L. Bryan Research & Engineering, LLC
- 32L. Continental Resources, Inc.
- 33L. ONEOK, Inc.
- 34L. ONEOK, Inc.
- 35L. Building Controls and Service, Inc.
- 36L. Bureau of Land Management
- 37L. Burgess & Niple, Inc.
- 38L. CymSTAR, LLC
- 39L. FSB Architects + Engineers
- 40L. FSB Architects + Engineers
- 41L. Monte R. Lee Company
- 42L. Mewbourne Oil Company
- 43L. Mewbourne Oil Company
- 44L. Burns & McDonnell
- 45L. Climate Control Group
- 46L. Carboline
- 47L. Haskell
- 48L. Haskell
- 49L. Phillips 66
- 50L. Phillips 66



- 51L. Carollo Engineers
- 52L. CEC Corporation
- 53L. Citation Oil & Gas Corp
- 54L. Shell USA, Inc.
- 55L. Paycom
- 56L. Paycom
- 57L. CF Industries
- 58L. CF Industries

- 59L. Energy Transfer
- 60L. Civil & Environmental Consultants, Inc.
- 61L. EOG Resources
- 62L. Epic
- 63L. CONNECT Structural Engineering, Inc.
- 64L. Cornerstone Building Brands
- 65L. Williams
- 66L. Williams
- 67L. Cowan Group Engineering
- 68L. Federal Aviation Administration (FAA)
- 69L. Crafton, Tull & Associates
- 70L. CVR Energy
- 71L. Dashiell Corporation
- 72L. Electrical Consultants, Inc.
- 73L. Valero
- 74L. Valero
- 75L. Texas Instruments, Inc.
- 76L. Enerflex
- 77L. Chevron
- 78L. Chevron
- 79L. Engineering Consulting Services
- 80L. Enviro Systems
- 81L. Exxon Mobil Corporation
- 82L. Envirotech Engineering & Consulting
- 83L. Epirus, Inc.
- 84L. Evans General Contractors, LLC
- 85L. Koch Industries, Inc.
- 86L. Fluor Corporation
- 87L. Ford Audio-Video, LLC
- 88L. Freese and Nichols
- 89L. Garver
- 90L. Gore Nitrogen Pumping Service, LLC
- 91L. Granite
- 92L. Green Acorn, LLC
- 93L. Guernsey
- 94L. Hobby Lobby, Inc.
- 95L. SLB
- 96L. X
- 97L. Textron
- 98L. Textron
- 99L. H.W. Lochner, Inc.
- 100L. Half
- 101L. Hess Corporation
- 102L. HF Sinclair Corporation
- 103L. HMT, LLC
- 104L. Bachoco OK Foods
- 105L. HNTB Corporation
- 106L. Holcim US



# 2nd Level (Concourse)

- 4c. Huitt-Zollars, Inc.
- 5c. IERUS Technologies, Inc.
- 6c. Indian Health Service
- 7c. Marine Corps Officer Program - OK
- 8c. International Paper
- 9c. Jacobs
- 10c. Kansas Dept. of Transportation
- 11c. KBR
- 12c. Keller North America, Inc.
- 13c. Kimley-Horn
- 14c. Kirkpatrick Forest Curtis PC
- 15c. KSA
- 16c. X
- 17c. Lina T. Ramey & Associates, Inc.
- 18c. LJA Engineering
- 19c. MacArthur Associated Consultants
- 20c. Manhard Consulting, Ltd.
- 21c. ME Engineers
- 22c. Meshek & Associates, LLC
- 23c. Michels
- 24c. MKEC Engineering, Inc.
- 25c. Naval Air Systems Command
- 26c. Office of Management and Enterprise Services - OK
- 27c. Office of Management and Enterprise Services - OK
- 28c. North Star Scientific
- 29c. OG&E
- 30c. OK State Board of Licensure
- 31c. Oklahoma Transportation
- 32c. OK Department of Environmental Quality
- 33c. Olsson
- 34c. Parkhill
- 35c. Poe & Associates
- 36c. POWER Engineers, Inc.
- 37c. ONE Gas, Inc.
- 38c. Oxy
- 39c. Primoris Service Corporation
- 40c. X
- 41c. PepsiCo
- 42c. Percheron, LLC
- 43c. Professional Engineering Consultants
- 44c. PSI, an InterTek Company
- 45c. Quest Consultants, Inc.
- 46c. Rehrig Pacific Company
- 47c. Rheem Manufacturing
- 48c. RJN Group, Inc.
- 49c. RTX

- 50c. Scout Energy Partners
- 51c. SCS Engineers
- 52c. Sinacola
- 53c. Southern Plains Transportation Center
- 54c. Spirit AeroSystems
- 55c. Standard Testing & Engineering
- 56c. Tanner Consulting, LLC
- 57c. TEIM Design, PLLC
- 58c. Tetra Tech, Inc.
- 59c. Texas Department of Transportation
- 60c. The Toro Company
- 61c. Trinity Consultants
- 62c. OU - Advanced Radar Research Center
- 63c. U.S. Navy
- 64c. U.S. Patent and Trademark Office
- 65c. Valaris
- 66c. Vital Energy
- 67c. US Army Corps of Engineers - Tulsa District
- 68c. Vulcan Materials Company
- 69c. Wallace Design Collective
- 70c. Walmart & Sam's Club
- 71c. Weatherford
- 72c. Weaver Consultant Group
- 73c. Webco Industries, Inc.
- 74c. Western Farmers Electric Cooperative
- 75c. WSB & Associates, Inc.
- 76c. Zeeco, Inc.
- 77c. ZFI Engineering

