

OU Water Day Water Treatment and Remediation

Greg Carr, P.E.
Chief Engineer
Water Quality Division

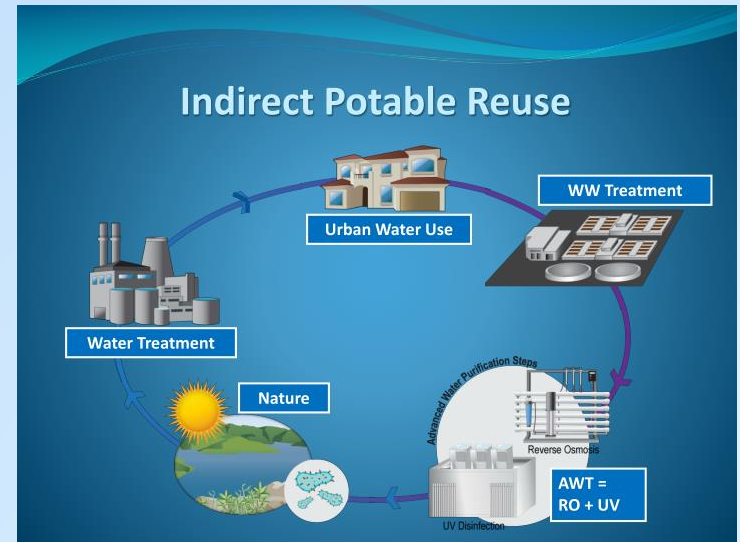


DEQ Water Quality Division

- Clean Water Act
 - Municipal and Industrial Wastewater - NPDES
 - Stormwater
- Safe Drinking Water Act
 - Public Water Supplies
 - Drinking Water State Revolving Fund
- Construction Permitting
- Operator Certification
- Water Reuse

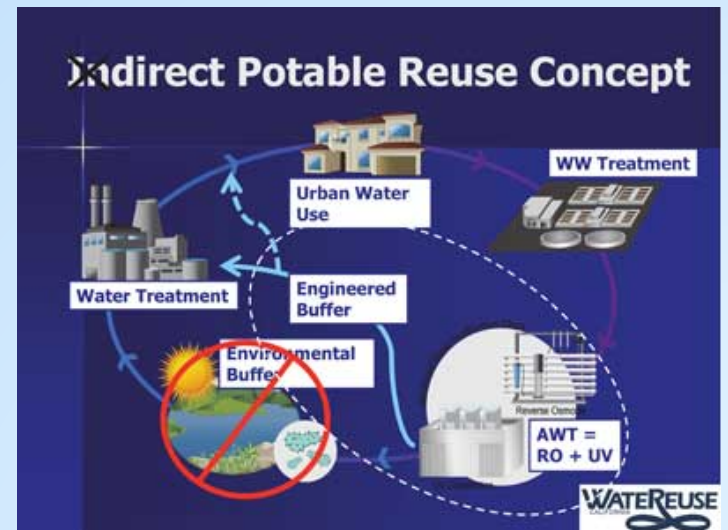
DEQ Water Quality Division

- Indirect Potable Reuse (IPR)
 - Planned discharge of treated wastewater to surface water body for PWS augmentation
- Harmful Algal Bloom (HAB)
 - Nutrient control
 - Monitoring



DEQ Water Quality Division

- Direct Potable Reuse (DPR)
 - Wastewater advanced treatment and distribution without an environmental buffer
- Pathogen control
- Constituents of Emerging Concern (CEC)
 - Non-target analyses, such as bioassays
 - Health-Based Screening Levels
 - Monitoring, testing methods
 - Lists, surrogates, indicators
 - Source control

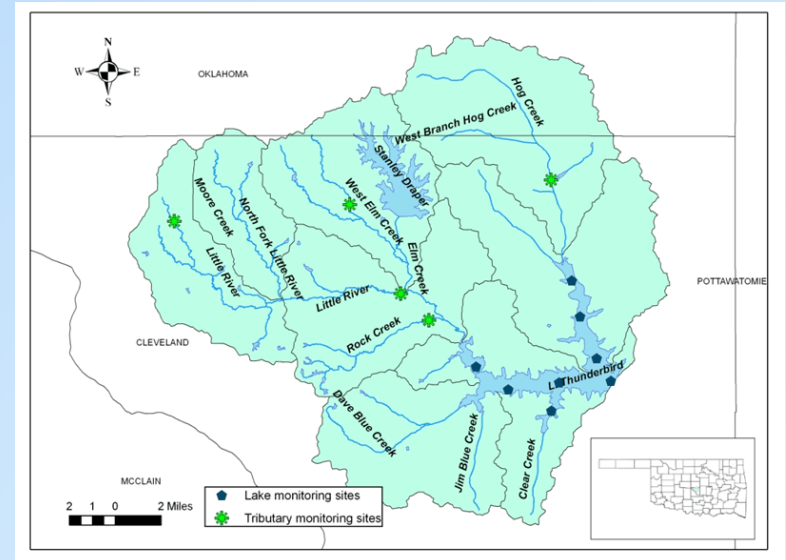


DEQ Water Quality Division

- Watershed Planning

- EFDC
- HSPF
- ELCOM-CAEDYM
- SWAT
- QUAL2K

- Total Maximum Daily Load (TMDL) program



Questions?

Greg Carr, P.E.
WQD Chief Engineer
Office: (405) 702-8298
gregory.carr@deq.ok.gov

