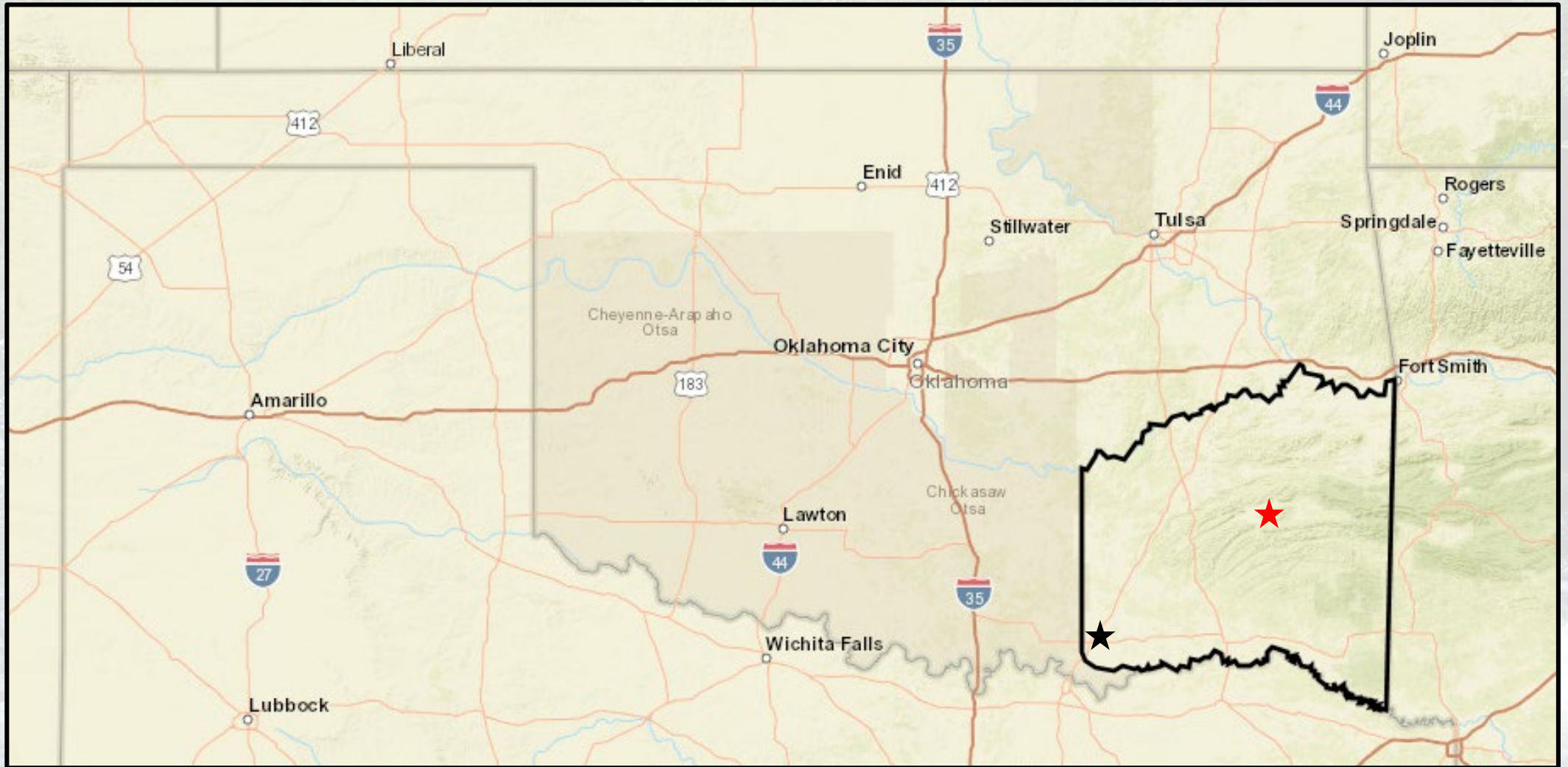


The Choctaw Nation of Oklahoma Water Resources Department



Where We're Located



What We Do

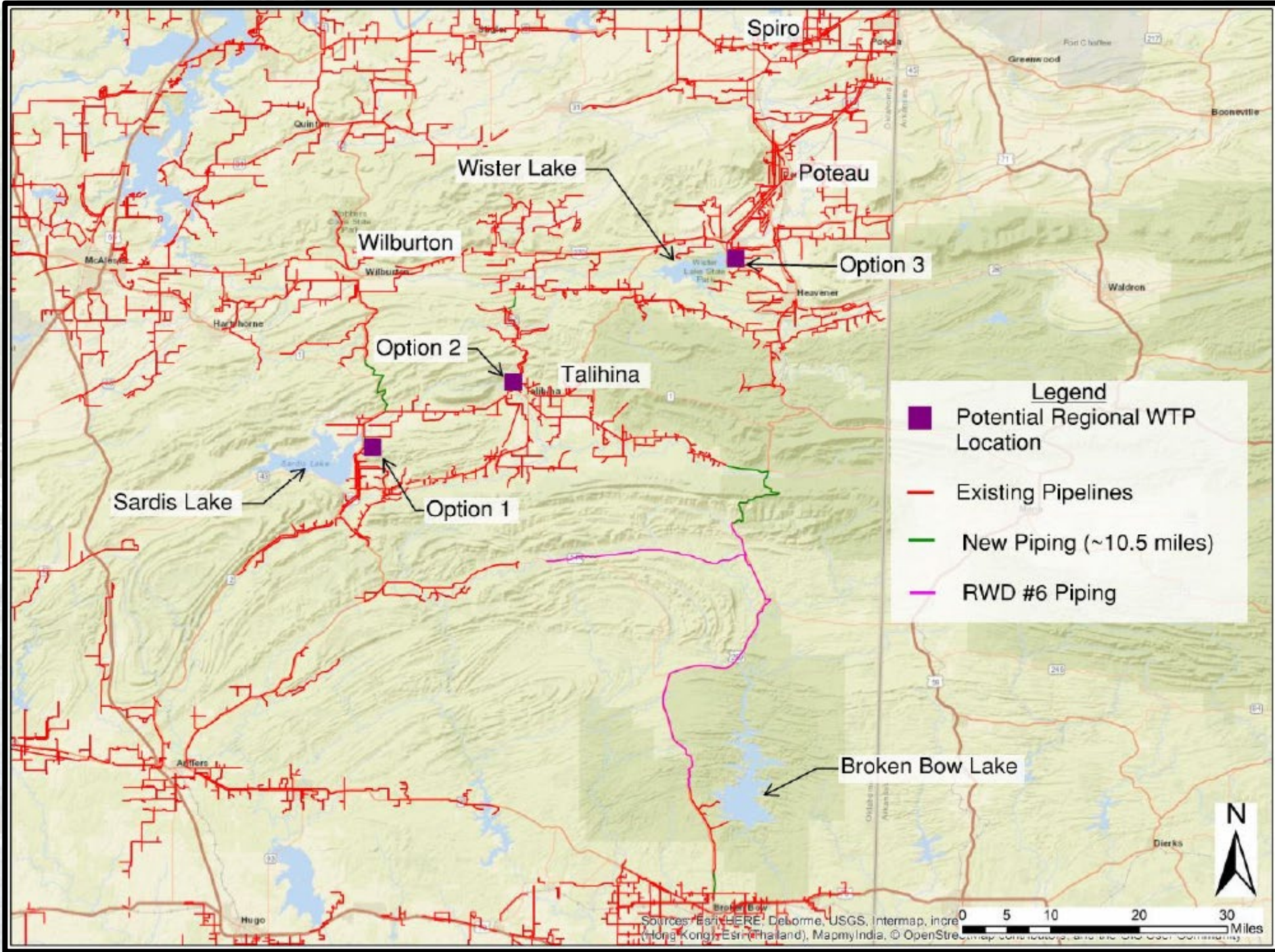
- Conduct Water Monitoring on Creeks, Rivers, and Lakes
- Ensure Proper Environmental Stewardship of Water Resources
- Study Non-Consumptive Usage Parameters
- Assist with Infrastructure Projects & Community Planning



Regionalization Study

- Evaluated 7 Different Water Providers
 - i. Vulnerabilities, Water Availability, Future Demand, & Mitigation Strategies
- Centralized System vs Interconnections
- Type of Interconnection (untreated/treated)



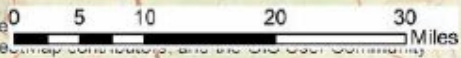


Legend

- Potential Regional WTP Location
- Existing Pipelines
- New Piping (~10.5 miles)
- RWD #6 Piping



Sources: Esri, HERE, DeLorme, USGS, Intermap, increment P Corp., Swisstopo, Mapbox Labs, Stamen, Bing, Aero Ideals, Esri (Thailand), MapmyIndia, © OpenStreetMap contributors, and the GIS User Community



Moving Forward

- Water Quality of Raw Water Supplies
 - i. Nutrients, Temperature, & Sedimentation = Increases in Cyanotoxins & DBPs
 - ii. Watershed Management Technique Application
- In-Stream Flows
 - i. Requirements for consumptive and non-consumptive usage
 - ii. How do you measure aesthetics and what quantitative value do you assign it?



YAKOKE

