

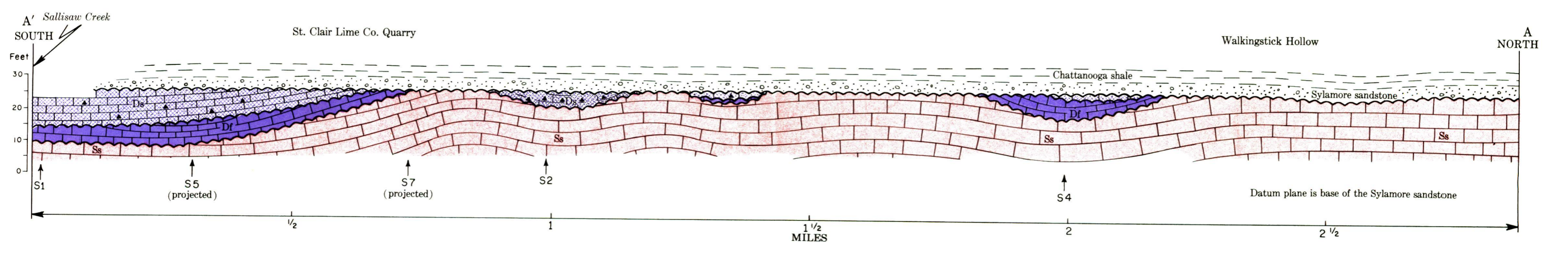
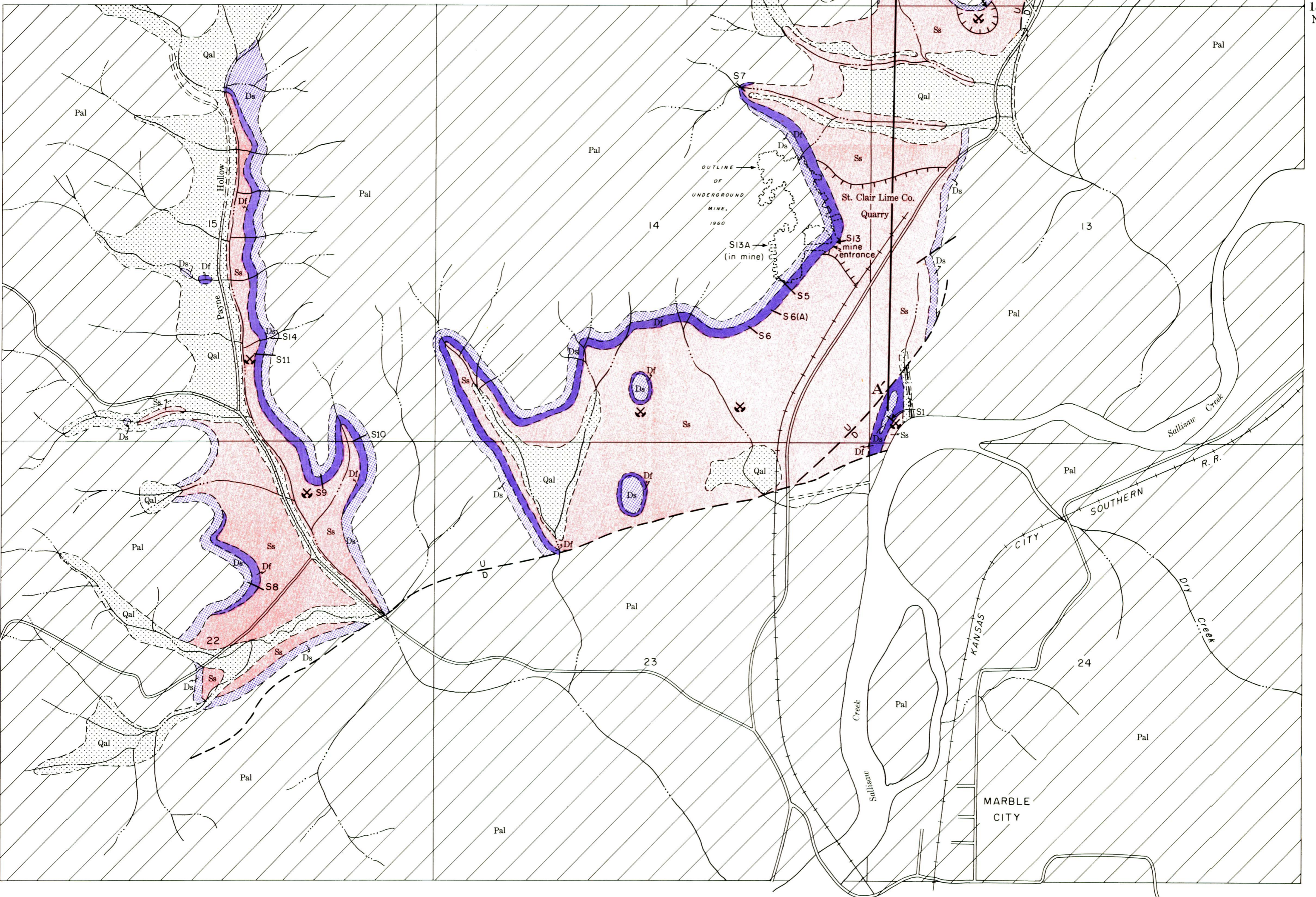
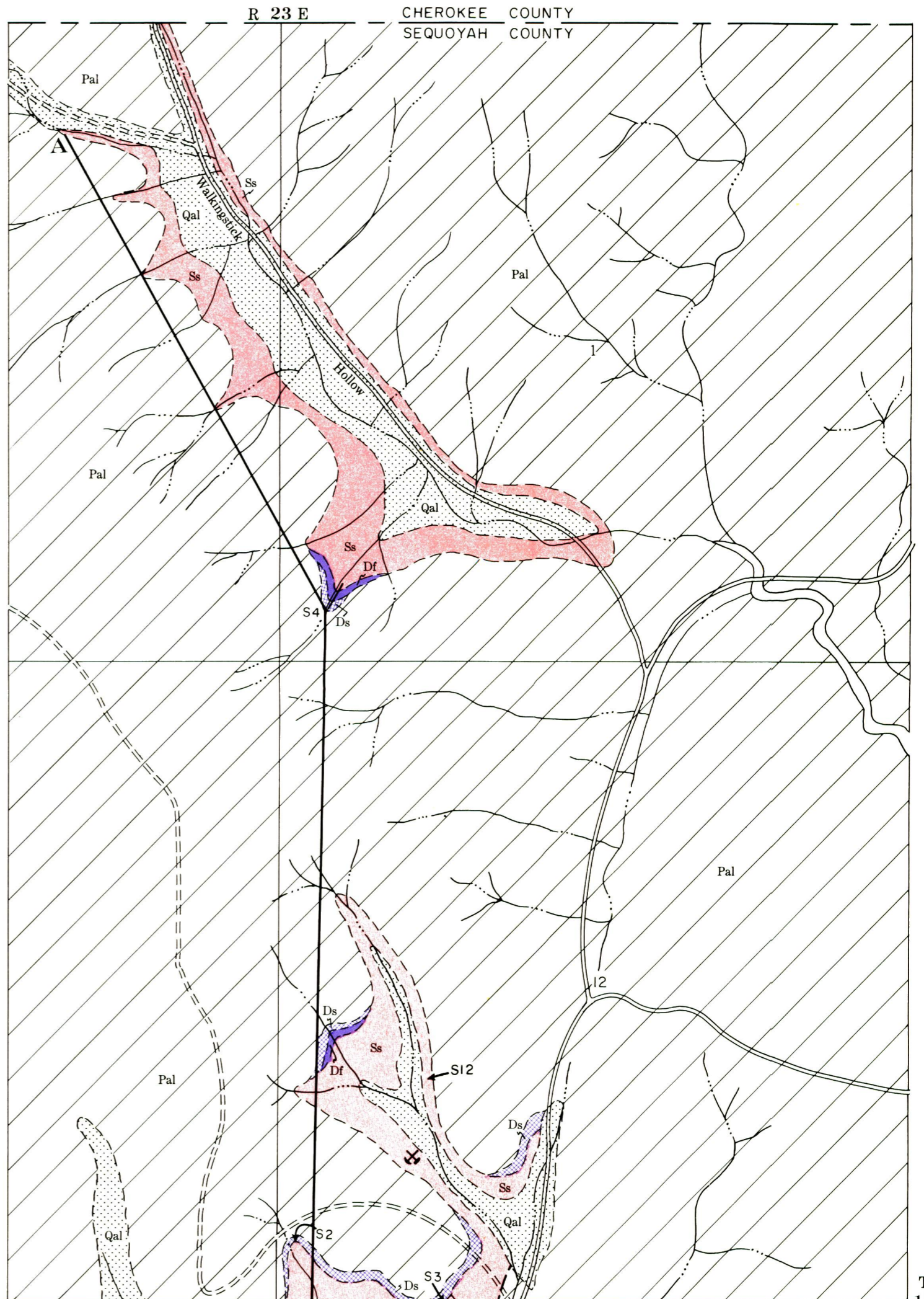
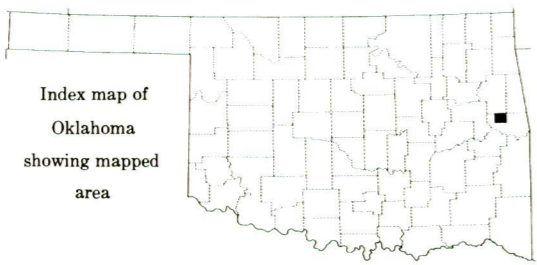
GEOLOGIC MAP AND SECTION
 OF THE
ST. CLAIR, FRISCO, AND SALLISAW FORMATIONS
 IN THE
MARBLE CITY AREA
 SEQUOYAH COUNTY, OKLAHOMA

by
H. E. Christian (1953)
 modified by
T. W. Amsden
 1961



EXPLANATION

- Qal Cenozoic terrace and alluvial deposits
- Pal Post-Sallisaw Paleozoic strata
- Ds Sallisaw formation } Lower Devonian } (outcrop width exaggerated)
- Df Frisco formation } (Ulsterian)
- Ss St. Clair formation } Middle ? Silurian
- S1 Stratigraphic section (see APPENDIX)
- Abandoned quarry or prospect pit
- A—A' Line of stratigraphic section
- Unconformity



STRATIGRAPHIC SECTION ALONG LINE A-A'