

14
DAVON OIL & GAS CO.
KROW I
NE NE SE 17-24N-5E
Elev 817'

13
ALADDIN PETR. CORP
CAMPBELL I
SE NW SW 2-23N-5E
Elev 932'

12
SIGNAL OIL & GAS CO.
ENDICOTT I
NE NE NW 34-23N-5E
Elev 940'

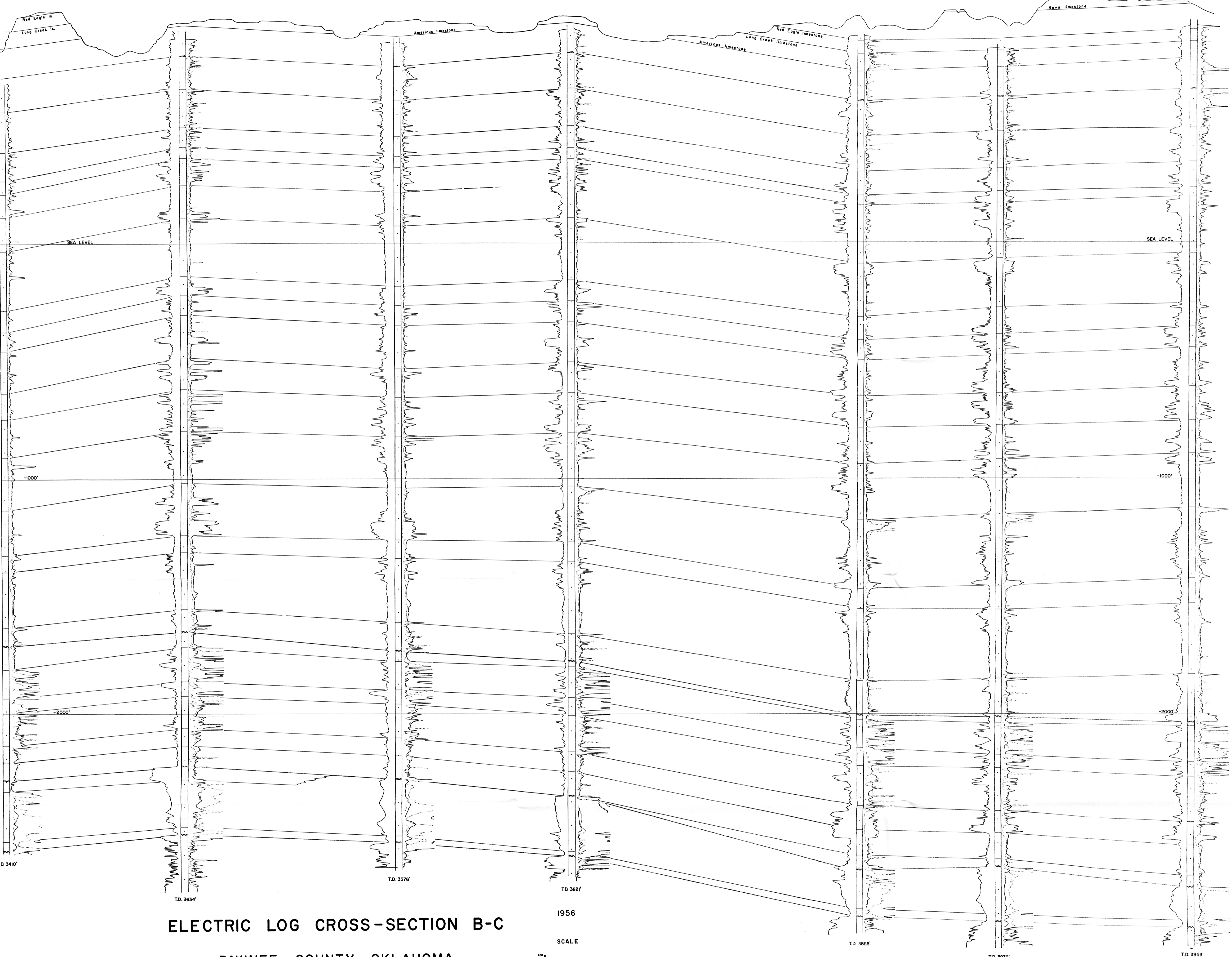
11
E. S. ADKINS
GLENN I
NE SW SW 14-22N-5E
Elev 959'

10
MOWHAWK DRILLING CO. ET AL
GRIESEL I
SE SE NW 18-21N-5E
Elev 953'

9
MID-CONTINENT PETROLEUM CORP.
NIMERICK I
SW SE NW 31-21N-5E
Elev 948'

8
WESTGATE-GREENLAND OIL CO.
COOPER I
NE SE 19-20N-5E
Elev 1002'

SYSTEM	SERIES	GROUP	PERMIAN	
			WOLF CAMP	ADMIRE
WABANSEAN	Red Eagle ls			
	Johnson sh.			
	Long Creek ls			
	Hughes Creek sh			
	Americus ls			
	Admiral group (undifferentiated)			
	Brownville ls			
	Pony Creek sh			
	"Grayhorse" ls.			
	Elmout ls			
	Horseyville sh			
	Reading ls			
	Auburn sh.			
	Wokusa ls.			
	Bird Creek ls.			
Severy-Aarde sh				
Turkey Run ls.				
Leampton ls.?				
SHAWNEE	Barnes sd.			
	WYONIA SS.			
	Endicott sd.			
	CHESWELL SS.			
	Revard ss.			
	Tonkawa sd.			
	Bigheart ss.			
	OKESO SS.			
	Clem Creek ss.			
	"Washington Irving" ss.			
SHELATA	Avant ls.			
	Oil City lime			
	Cartage Grove ss.			
	Muslem sd (Osage Loyal)			
	Nellie Bly fm.			
	Hoghooker lime			
	Layton sd.			
	Checkerboard ls.			
	Seminole ss.			
	Cleveland sd.			
MOINESIAN	Nowata sh.			
	Wayside (Hallett) sd.			
	Big lime			
	Peru sd.			
	Wheeler sd.			
	Oswego lime			
	Prue sd.			
	Little Oswego lime			
	Skinner sd.			
	Pink lime			
DESMOINESIAN	Tiawah ls.			
	Red Fork sd.			
	Taft ss.			
	Chesed ss.			
	Skinner sd.			
	Red Fork sd.			
	inola ls.			
	Burgess sd.			
	Mississippi chat			
	Detrital chat			
OSAGEAN	Sycamore ls.			
	Mississippi lime			
	Woodford ls.			
ORDOVICIAN	Woodford ls.			
	Sycamore ss.			
Viola ls. and Simpson group (undifferentiated)				
Wilcox (Tucker) sd.				
Honey sd.				
Arbuckle group				
Turkey Min. sd.				



ELECTRIC LOG CROSS-SECTION B-C

PAWNEE COUNTY, OKLAHOMA

P. B. GREIG JR.

1956

SCALE

