

SURFACE TERMINOLOGY

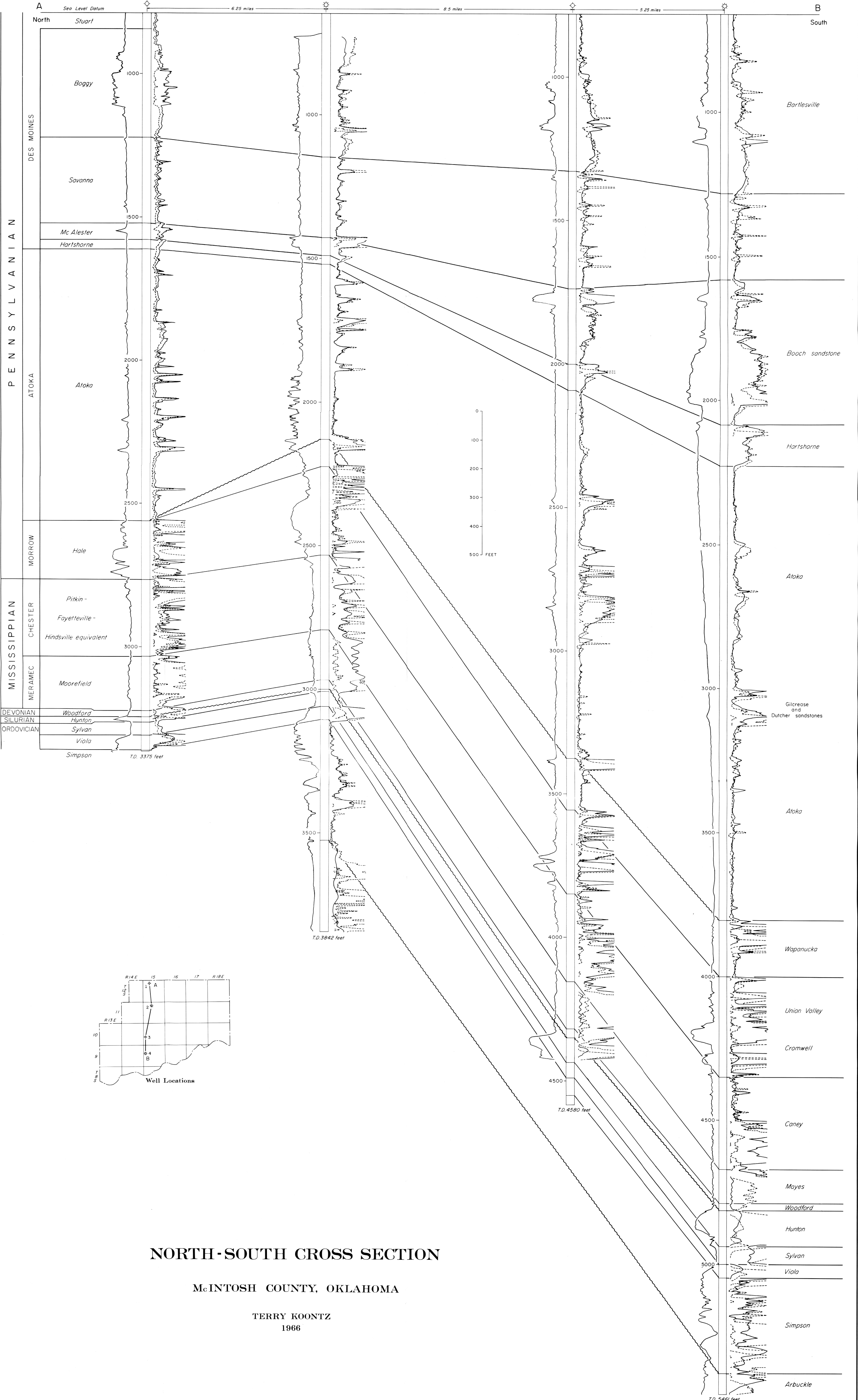
SUBSURFACE NAMES

1 ALLIED MATERIALS CORP.
1 Shannon
SW NE 5-12N-15E

2 TENNECO OIL CO.
1 Hill
NW SW SE 4-11N-15E

3 CHAPMAN and POLAND
1 Schrimsher
SW SE NE 19-10N-15E

4 CARTER OIL
1 Fallsbee
SW NW SW 18-9N-15E



NORTH-SOUTH CROSS SECTION

McINTOSH COUNTY, OKLAHOMA

TERRY KOONTZ
1966