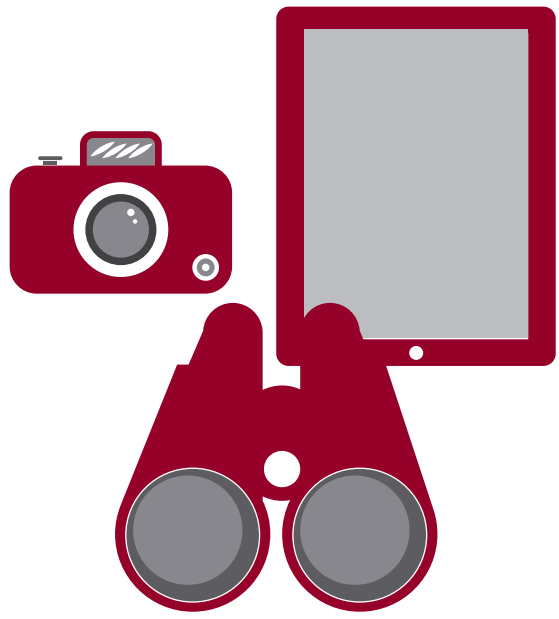


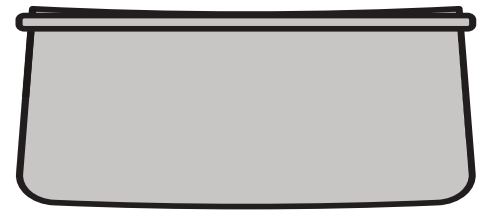


CEREMONIES CARRY-IN POLICY

ITEMS PERMITTED



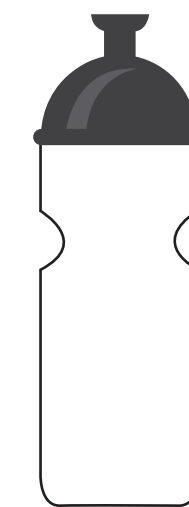
**BINOCULARS,
CAMERAS & TABLETS**



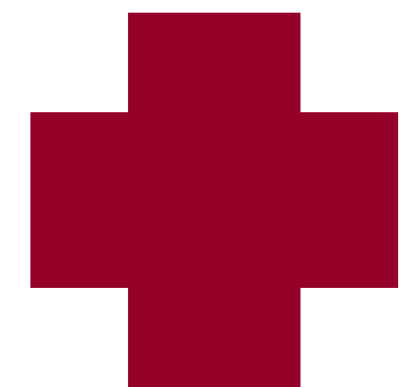
**6.5" X 4.5"
CLUTCH WALLET**
(WITH OR WITHOUT STRAP)



**12" X 6" X 12"
CLEAR TOTE**
(ANYTHING LARGER IS PROHIBITED)
CLEAR FANNY PACK
CLEAR CROSSBODY BAG



**TRANSPARENT/EMPTY
WATER BOTTLE**

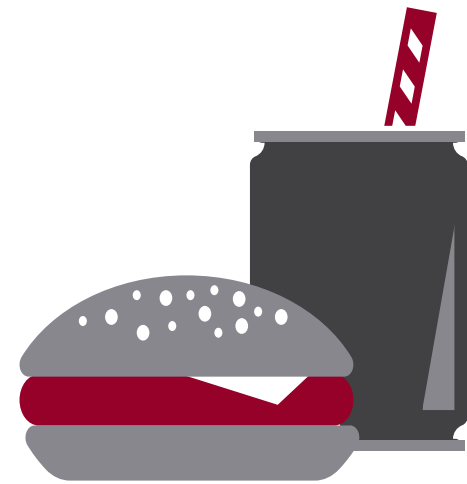


**ITEMS RELATED TO A
MEDICAL CONDITION**

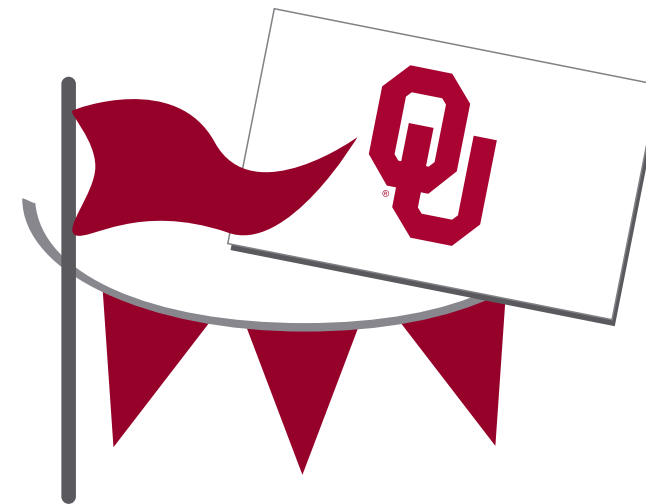
ITEMS PROHIBITED



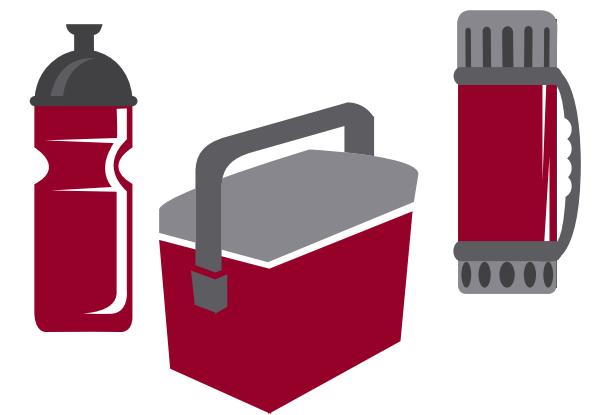
**NO PURSES, BACKPACKS,
DRAWSTRING BAGS, FANNY PACKS,
DIAPER BAGS, CROSSBODY BAGS &
BINOCULAR CASES**



NO FOOD OR BEVERAGES
(INCLUDING ALCOHOL)



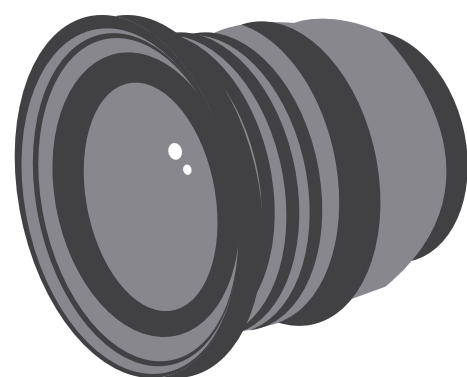
**NO FLAGS, SIGNS
OR BANNERS**



NO CONTAINERS



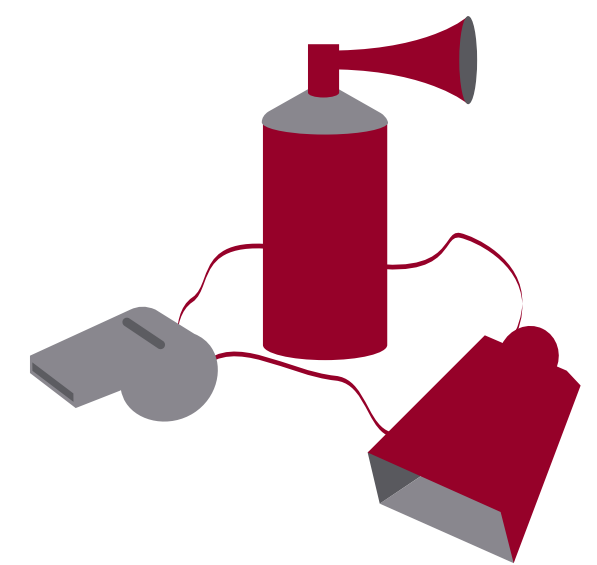
**NO STROLLERS
OR BABY CARRIERS**



**NO VIDEO CAMERAS OR
CAMERAS WITH LENSES
GREATER THAN 6"**



**NO CHAIRBACKS OVER 16"
WIDE OR WITH OVERSIZED
METAL FRAMES.**



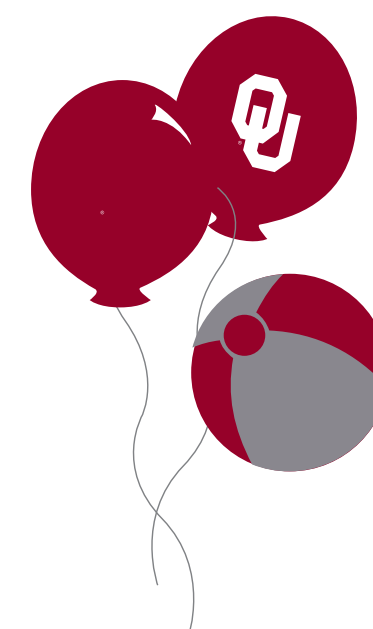
NO NOISEMAKERS



NO WEAPONS



NO UMBRELLAS



NO INFLATABLES

ALL CARRIED ITEMS AND ENTRANTS ARE SUBJECT TO SEARCH. PROHIBITED ITEMS MUST BE RETURNED TO THE OWNER'S CAR OR DISCARDED. ANY UNLAWFUL ITEMS ARE SUBJECT TO CONFISCATION, AND THE PERSON IN POSSESSION OF SUCH ITEMS IS SUBJECT TO ARREST. ITEMS LEFT AT THE GATE WILL BE DISCARDED.